

## Mouse Anti-FAT4 antibody

SLM-51726M

<b>Product Name</b>	FAT4
<b>Chinese Name</b>	FAT4 单克隆抗体
<b>Alias</b>	CDHF14; FAT4_HUMAN; Cadherin family member 14; FAT tumor suppressor homolog 4; Fat-like cadherin protein FAT-J; FATJ; hFat4; Nbla00548; Protocadherin Fat 4.
<b>Research Area</b>	Tumour Signal transduction Cell adhesion molecule Cell differentiation
<b>Immunogen Species</b>	Mouse
<b>Clonality</b>	Monoclonal
<b>Clone NO.</b>	H10M4
<b>React Species</b>	Human,Recombinant protein WB=1:500-2000
<b>Applications</b>	not yet tested in other applications. optimal dilutions/concentrations should be determined by the end user.
<b>Theoretical molecular weight</b>	538kDa
<b>Cellular localization</b>	The cell membrane
<b>Form</b>	Liquid
<b>Concentration</b>	1mg/ml
<b>immunogen</b>	Recombinant human FAT4 between 4500-4786 amino acids
<b>Lsotype</b>	IgG1,k
<b>Purification</b>	affinity purified by Protein G
<b>Buffer Solution</b>	1M TBS(pH7.4) with 1% BSA, 3% Proclin300 and 50% Glycerol.
<b>Storage</b>	Shipped at 4°C. Store at -20 °C for one year. Avoid repeated freeze/thaw cycles.
<b>Attention</b>	This product as supplied is intended for research use only, not for use in human, therapeutic or diagnostic applications.
<b>PubMed</b>	<a href="#">PubMed</a>
<b>Product Detail</b>	The protein encoded by this gene is a member of the protocadherin family. This gene may play a role in regulating planar cell polarity (PCP). Studies in

mice suggest that loss of PCP signaling may cause cystic kidney disease, and mutations in this gene have been associated with Van Maldergem Syndrome 2. Alternatively spliced transcript variants have been noted for this gene. [provided by RefSeq, Mar 2014]

**Function:**

May function in the regulation of planar cell polarity. Cadherins are cell-cell interaction molecules.

**Subcellular Location:**

Membrane. In the kidney, localizes to primary cilia.

**Tissue Specificity:**

Widely expressed. Expressed in fetal brain, infant brain, brain tumor and colorectal cancer.

**Similarity:**

Contains 34 cadherin domains.  
Contains 6 EGF-like domains.  
Contains 2 laminin G-like domains.

**SWISS:**

Q6V0I7

**Gene ID:**

79633

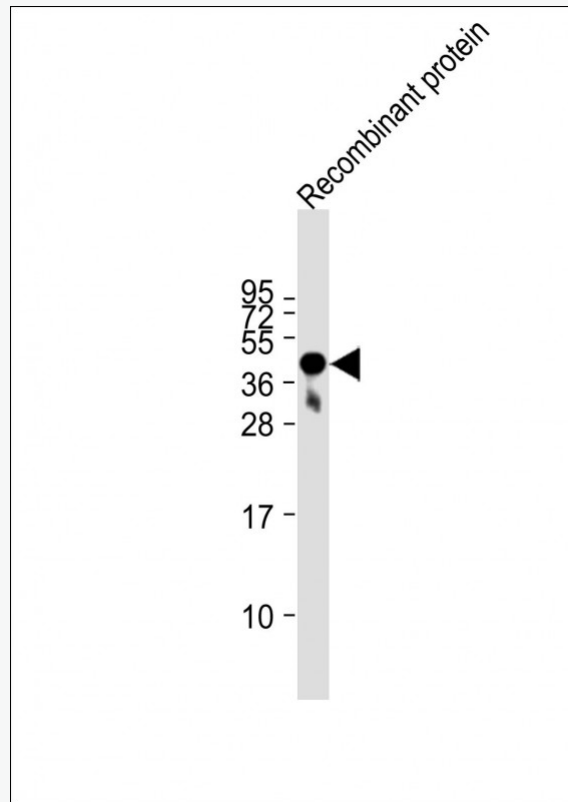
**Database links:**

[Entrez Gene: 79633](#) Human

[SwissProt: Q6V0I7](#) Human

[Unigene: 563205](#) Human

**Product Picture**



Sample:

Lane 1: FAT4 Recombinant protein

Primary: Anti-FAT4 (SLM-51726M) at 1/2000 dilution

Secondary: IRDye800CW Goat Anti-Mouse IgG at 1/20000 dilution

Predicted band size: 538 kD

Observed band size: 45 kD