

Mouse Anti-PDCD1LG2 antibody

SLM-51708M

Product Name PDCD1LG2

Chinese Name 程序性死亡配体 2 (CD273) 单克隆抗体

Alias PD L2; PD-L2; PD1L2_HUMAN; B7 dendritic cell molecule; B7-DC; B7DC; bA574F11.2; B7-1; Butyrophilin B7-DC; Butyrophilin B7DC; CD 273; CD273; CD273 antigen; MGC142238; MGC142238 protein; PD1 ligand 2; PDCD 1 ligand 2; PDCD1 ligand 2; PDL 2; PDL2; Programmed cell death ligand 2.

Research Area immunology

Immunogen Species Mouse

Clonality Monoclonal

Clone NO. G8F6

React Species Human

Applications WB=1:1000-2000,IHC-P=1:100-400,IHC-F=1:100-400,IF=1:100-500 (Paraffin sections need a control).
not yet tested in other applications.
optimal dilutions/concentrations should be determined by the end user.

Theoretical molecular weight 29kDa

Cellular localization The cell membrane Secretory protein

Form Liquid

Concentration 1mg/ml

immunogen KLH conjugated synthetic peptide derived from human PDCD1LG2: 31-130/273

Lsotype IgG1, κ

Purification affinity purified by Protein G

Buffer Solution 1M TBS(pH7.4) with 1% BSA, 3% Proclin300 and 50% Glycerol.

Storage Shipped at 4°C. Store at -20 °C for one year. Avoid repeated freeze/thaw cycles.

Attention This product as supplied is intended for research use only, not for use in human, therapeutic or diagnostic.

PubMed [PubMed](#)

Involved in negative regulation of activated T cell proliferation; negative regulation of interferon negative regulation of interleukin-10 production. Predicted to be located in plasma membrane. P side of plasma membrane. Biomarker of pulmonary tuberculosis. [provided by Alliance of Geno

Function:

Involved in the costimulatory signal, essential for T-cell proliferation and IFNG production in a Interaction with PDCD1 inhibits T-cell proliferation by blocking cell cycle progression and cyto

Subunit:

Interacts with PDCD1.

Subcellular Location:

Isoform 3: Secreted (Probable).

Isoform 2: Endomembrane system; Single-pass type I membrane protein.

Isoform 1: Cell membrane; Single-pass type I membrane protein.

Tissue Specificity:

Highly expressed in heart, placenta, pancreas, lung and liver and weakly expressed in spleen, lym

**Product
Detail**

Post-translational modifications:

Phosphorylated by AKT1. Phosphorylation relieves inhibitory function on mTORC1.

Similarity:

Belongs to the immunoglobulin superfamily. BTN/MOG family.

Contains 1 Ig-like C2-type (immunoglobulin-like) domain.

Contains 1 Ig-like V-type (immunoglobulin-like) domain.

SWISS:

Q9BQ51

Gene ID:

80380

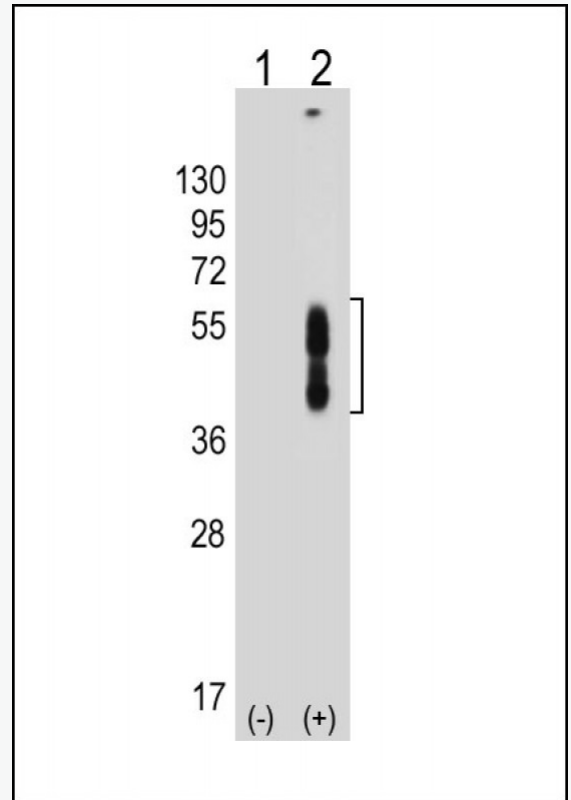
Database links:

[Entrez Gene: 80380](#) Human

[Omim: 605723](#) Human

[SwissProt: Q9BQ51](#) Human

**Product
Picture**



Sample:

Lane 1: Non-transfected 293T cell lysates

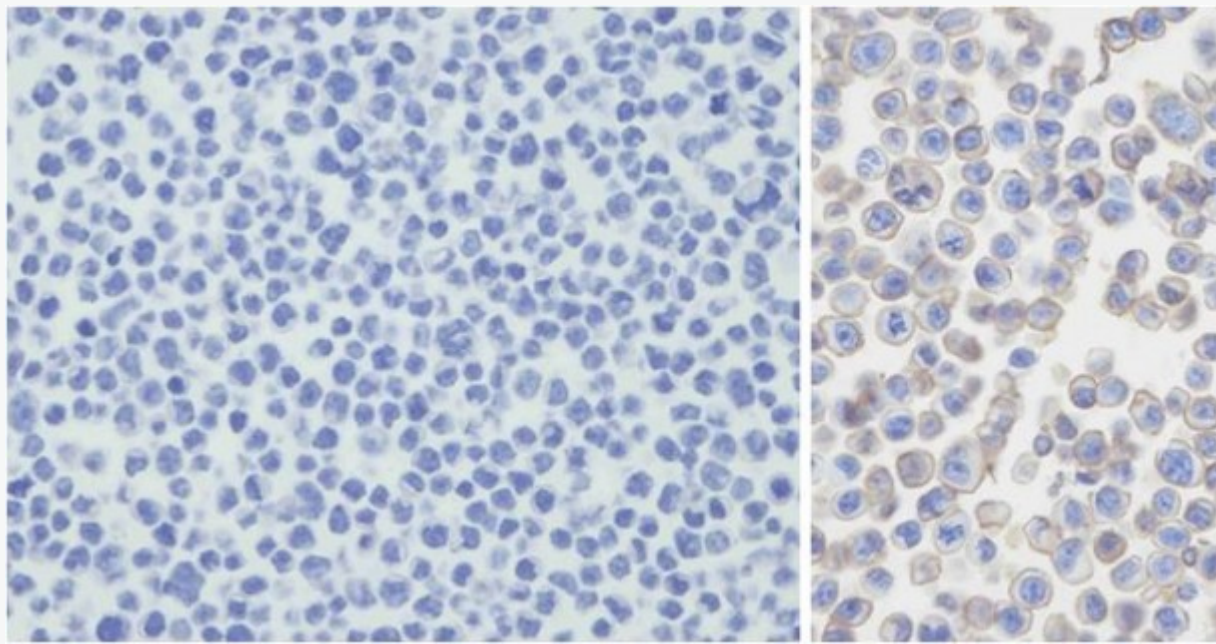
Lane 2: Transfected PD-L2-transfected 293T cell lysates

Primary: Anti-PDCD1LG2 (SLM-51708M) at 1/8000 dilution

Secondary: IRDye800CW Goat Anti-Mouse IgG at 1/20000 dilution

Predicted band size: 29 kD

Observed band size: 40-55 kD



Immunohistochemical analysis of PDL-2 in untransfected(left) or transfected(right) with 293T with formaldehyde; antigen retrieval was by heat mediation with a EDTA buffer (pH9.0). Same primary antibody (1:25) for 1 hours at room temperature. A undiluted biotinylated goat polyv secondary antibody.