

Mouse Anti-REG3G antibody

SLM-51653M

Product Name	REG3G
Chinese Name	REG3G 单克隆抗体
Alias	Reg III gamma; REG3G_HUMAN; Reg3 gamma; Reg3gamma; Reg-3gamma; Regenerating islet-derived protein 3-gamma; REG-3-gamma; Pancreatitis-associated protein 1B; PAP-1B; Pancreatitis-associated protein IB; PAP IB; Regenerating islet-derived protein III-gamma; Reg III-gamma.
Research Area	immunology
Immunogen Species	Mouse
Clonality	Monoclonal
Clone NO.	F6D9
React Species	Human
Applications	WB=1:500-1000,IHC-P=1:100-500,IHC-F=1:100-500,IF=1:100-500 (Paraffin sections need antigen repair) not yet tested in other applications. optimal dilutions/concentrations should be determined by the end user.
Theoretical molecular weight	17kDa
Cellular localization	Secretory protein
Form	Liquid
Concentration immunogen	1mg/ml Recombinant human REG3G.
Lsotype	IgG1,k
Purification	affinity purified by Protein G
Buffer Solution	1M TBS(pH7.4) with 1% BSA, 3% Proclin300 and 50% Glycerol.
Storage	Shipped at 4°C. Store at -20 °C for one year. Avoid repeated freeze/thaw cycles.
Attention	This product as supplied is intended for research use only, not for use in human, therapeutic or diagnostic applications.
PubMed	PubMed

The regeneration (REG) family consists of secretory proteins involved in liver, pancreatic, gastric and intestinal cell proliferation or differentiation. Members of the REG family are divided into four subclasses, designated types I, II, III and IV, all of which share a common gene structure containing five introns and six exons. Members of the Reg family have been implicated in the regulation of cell growth, tumorigenesis and the progression of cancer. Reg III (regenerating islet-derived 3 gamma), also known as pancreatitis-associated protein 1B, PAP1B, or UNQ429, is a 175 amino acid secreted protein that is expressed almost exclusively in pancreas, with low levels of expression in testis. Reg III functions as an antimicrobial protein involved in controlling bacterial proliferation and may be induced during acute pancreatitis. The gene encoding Reg III maps to human chromosome 2, which houses over 1,400 genes and comprises nearly 8% of the human genome.

Function:

Might be a stress protein involved in the control of bacterial proliferation.

Subcellular Location:

Secreted.

Tissue Specificity:

Expressed almost exclusively in the pancreas. Also expressed in testis. Not found in small intestine.

Similarity:

Contains 1 C-type lectin domain.

SWISS:

Q6UW15

Gene ID:

130120

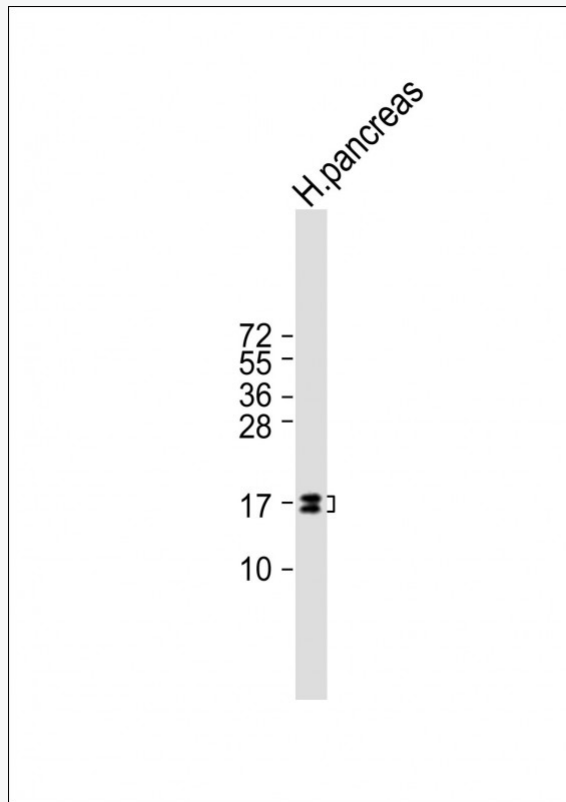
Database links:

[Entrez Gene: 130120](#) Human

[SwissProt: Q6UW15](#) Human

Product Detail

Product Picture



Sample:

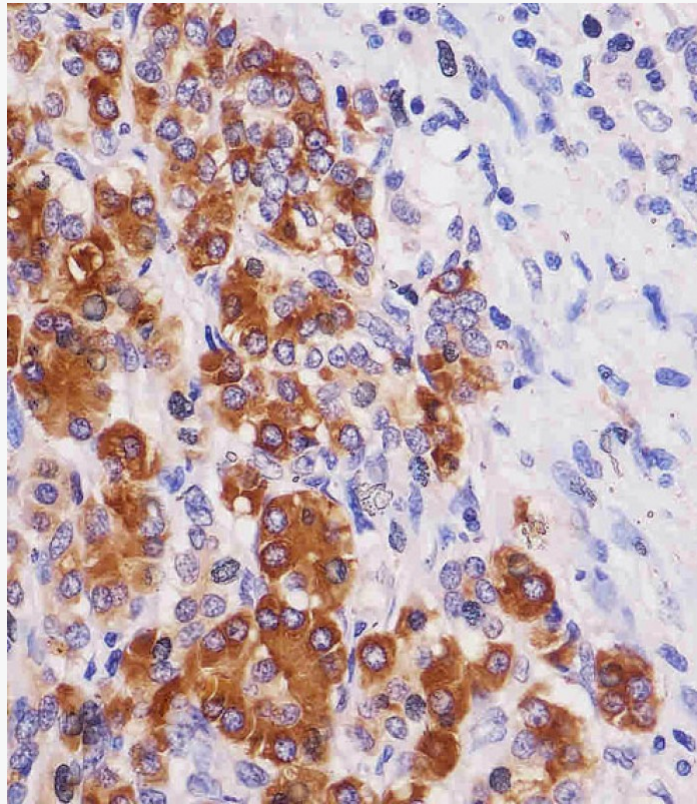
Lane 1: Human Pancreas tissue lysates

Primary: Anti-REG3G (SLM-51653M) at 1/1000 dilution

Secondary: IRDye800CW Goat Anti-Mouse IgG at 1/20000 dilution

Predicted band size: 17 kD

Observed band size: 17 kD



Paraformaldehyde-fixed, paraffin embedded (human pancreas tissue sections); Antigen retrieval by boiling in sodium citrate buffer (pH6.0) for 15min; Block endogenous peroxidase by 3% hydrogen peroxide for 20 minutes; Blocking buffer (normal goat serum) at 37°C for 30min; Antibody incubation with (REG3G) Monoclonal Antibody, Unconjugated (SLM-51653M) at 1:200 overnight at 4°C, followed by operating according to SP Kit(Mouse)(sp-0024) instructions and DAB staining.