

Mouse Anti-TPX2 antibody

SLM-51631M

Product Name	TPX2
Chinese Name	微管相关同源蛋白 TPX2 单克隆抗体
Alias	C20ORF1; C20orf2; Chromosome 20 Open Reading Frame 1; Differentially expressed in cancerous and non-cancerous lung cells 2; Differentially expressed in cancerous and noncancerous lung cells 2; Differentially expressed in lung cells 2; Differentially expressed in lung cells; DIL 2; DIL-2; DIL2; FLS353; GD:C20orf1; HCA 519; HCA519; HCTP 4; HCTP4; Hepatocellular carcinoma associated antigen 519; Hepatocellular carcinoma-associated antigen 519; p100; Preferentially expressed in colorectal cancer; Protein FLS353; REPP 86; repp86; Restricted expression proliferation associated protein 100; Restricted expression proliferation-associated protein 100; Targeting protein for XKLP2; TPX 2; TPX2 microtubule associated homolog; TPX2 microtubule associated protein homolog; TPX2_HUMAN.
Research Area	Tumour Cell biology Chromatin and nuclear signals Cyclin Epigenetics
Immunogen Species	Mouse
Clonality	Monoclonal
Clone NO.	C3A12
React Species	Human, WB=1:500-2000
Applications	not yet tested in other applications. optimal dilutions/concentrations should be determined by the end user.
Theoretical molecular weight	86kDa
Cellular localization	The nucleus cytoplasmic
Form	Liquid
Concentration immunogen	1mg/ml Recombinant human TPX2 between 1-531 amino acids.
Lsotype	IgG1,k
Purification	affinity purified by Protein G



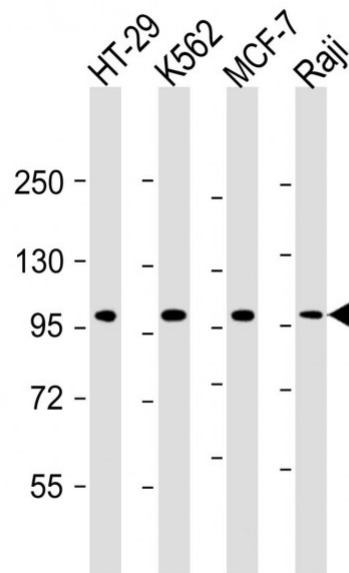
Buffer Solution	1M TBS(pH7.4) with 1% BSA, 3% Proclin300 and 50% Glycerol.
Storage	Shipped at 4°C. Store at -20 °C for one year. Avoid repeated freeze/thaw cycles.
Attention	This product as supplied is intended for research use only, not for use in human, therapeutic or diagnostic applications.
PubMed	PubMed TPX2 is essential for spindle pole and mitotic spindle formulation, playing a role in the S and G2 phases of mitosis. It is also critical for the function of protein kinase Aurora A. TPX2 autophosphorylates Aurora A, targeting it to the spindle apparatus and allowing it to function in eukaryotic meiotic and mitotic cell cycles. TPX2 has also been found to be highly expressed in cancer cells. Function: Spindle assembly factor. Required for normal assembly of mitotic spindles. Required for normal assembly of microtubules during apoptosis. Required for chromatin and/or kinetochore dependent microtubule nucleation. Mediates AURKA localization to spindle microtubules. Activates AURKA by promoting its autophosphorylation at 'Thr-288' and protects this residue against dephosphorylation. Subunit: Interacts with AURKA.
Product Detail	Subcellular Location: Nucleus. Cytoplasm, cytoskeleton, spindle. Cytoplasm, cytoskeleton, spindle pole. Note=During mitosis it is strictly associated with the spindle pole and with the mitotic spindle, whereas during S and G2, it is diffusely distributed throughout the nucleus. Is released from the nucleus in apoptotic cells and is detected on apoptotic microtubules. Tissue Specificity: Expressed in lung carcinoma cell lines but not in normal lung tissues. Similarity: Belongs to the TPX2 family. SWISS: Q9ULW0 Gene ID: 22974

Database links:

[Entrez Gene: 22974](#) Human

[SwissProt: Q9ULW0](#) Human

Product Picture



Sample:

Lane 1: HT-29 cell lysates

Lane 2: K562 cell lysates

Lane 3: MCF-7 cell lysates

Lane 4: Raji cell lysates

Primary: Anti-TPX2 (SLM-51631M) at 1/2000 dilution

Secondary: IRDye800CW Goat Anti-Mouse IgG at 1/20000 dilution



SunLong Biotech Co.,LTD
Tel: 0086-571-56623320 Fax:0086-571-56623318
E-mail:sales@sunlongbiotech.com
www.sunlongbiotech.com

Predicted band size: 86 kD

Observed band size: 98 kD