

Mouse Anti-RAB21 antibody

SLM-51622M

Product Name	RAB21
Chinese Name	G 蛋白家族 RAB21 单克隆抗体
Alias	RAB 21; RAB-21; RAB21, member RAS oncogene family; Ras-related protein Rab-21; RAB21_HUMAN.
Research Area	Tumour Cell biology Chromatin and nuclear signals Signal transduction Cyclin Cell adhesion molecule G protein-coupled receptor
Immunogen Species	Mouse
Clonality	Monoclonal
Clone NO.	G12F4
React Species	Human,African Green Monkey(predicted:Monkey) WB=1:500-2000
Applications	not yet tested in other applications. optimal dilutions/concentrations should be determined by the end user.
Theoretical molecular weight	24kDa
Cellular localization	cytoplasmic
Form	Liquid
Concentration	1mg/ml
immunogen	Recombinant human RAB21 between 1-225 amino acids.
Lsotype	IgG2b, κ
Purification	affinity purified by Protein G
Buffer Solution	Human,African Green Monkey(predicted:Monkey)1M TBS(pH7.4) with 1% BSA, Human,African Green Monkey(predicted:Monkey)3% Proclin300 and 50% Glycerol.
Storage	Shipped at 4°C. Store at -20 °C for one year. Avoid repeated freeze/thaw cycles.
Attention	This product as supplied is intended for research use only, not for use in human, therapeutic or diagnostic applications.
PubMed	PubMed

This gene belongs to the Rab family of monomeric GTPases, which are involved in the control of cellular membrane traffic. The encoded protein plays a role in the targeted trafficking of integrins via its association with integrin alpha tails. As a consequence, the encoded protein is involved in the regulation of cell adhesion and migration. Expression of this gene is associated with a poor prognosis for glioma patients. This gene is downregulated by the tumor suppressor miR-200b, and miRNA-200b is itself downregulated in glioma tissues. [provided by RefSeq, Nov 2015]

Function:

Regulates integrin internalization and recycling, but does not influence the traffic of endosomally translocated receptors in general. As a result, may regulate cell adhesion and migration. During the mitosis of adherent cells, controls the endosomal trafficking of integrins which is required for the successful completion of cytokinesis.

Subunit:

Interacts with the cytoplasmic tail of integrins ITGA1, ITGA2, ITGA5, ITGA6, ITGA11 and ITGB1. Interacts with RABGEF1 (via VPS9 domain).

Subcellular Location:

Endoplasmic reticulum membrane; Lipid-anchor. Golgi apparatus membrane. Early endosome membrane. Cytoplasmic vesicle membrane. Cleavage furrow. Note=In nonpolarized epithelial Caco-2 cells, found in the endoplasmic reticulum; in polarized cells, observed in vesicles in the apical cytoplasm. During mitosis, in mid-telophase, localized in the ingressing cleavage furrow. In late telophase, detected at the opposite poles of the daughter cells, in vesicles at the base of lamellipodia formed by the separating daughter cells.

Tissue Specificity:

Widely expressed. In jejunal tissue, predominantly expressed in the apical region of the epithelial cell layer of the villi, weak expression, if any, in the crypt epithelium. Capillary endothelium and some cell types in the lamina propria also show expression.

Similarity:

Belongs to the small GTPase superfamily. Rab family.

SWISS:

Q9UL25

Gene ID:

23011

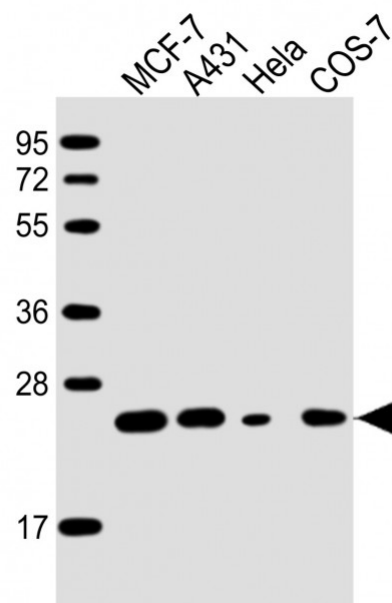
Product Detail

Database links:

[Entrez Gene: 23011](#) Human

[SwissProt: Q9UL25](#) Human

Product Picture



Sample:

Lane 1: MCF-7 cell lysates

Lane 2: A431 cell lysates

Lane 3: HeLa cell lysates

Lane 4: COS-7 cell lysates

Primary: Anti-RAB21 (SLM-51622M) at 1/2000 dilution

Secondary: IRDye800CW Goat Anti-Mouse IgG at 1/20000 dilution



SunLong Biotech Co.,LTD

Tel: 0086-571-56623320 Fax:0086-571-56623318

E-mail:sales@sunlongbiotech.com

www.sunlongbiotech.com

Predicted band size: 24 kD

Observed band size: 24 kD