



Mouse Anti-CDK5 antibody

SLM-51610M

Product Name CDK5**Chinese Name** 周期素依赖性激酶 5 单克隆抗体**Alias** Cdk 5; Cell division protein kinase 5; Crk6; Cyclin dependent kinase 5; Protein kinase CDK5 sp
PSSALRE; Serine threonine protein kinase PSSALRE; Tau protein kinase II catalytic subunit; T
catalytic subunit; CDK5_HUMAN.**Research Area** Tumour Cell biology Neurobiology Cyclin Kinases and Phosphatases Cell differentiation The ne
supersedes the old**Immunogen Species** Mouse**Clonality** Monoclonal**Clone NO.** G5D4**React Species** Human,Mouse**Applications** WB=1:500-2000,IHC-P=1:100-500,IHC-F=1:100-500,ICC/IF=1:50-200,IF=1:100-500,Flow-Cy
(Paraffin sections need antigen repair)
not yet tested in other applications.
optimal dilutions/concentrations should be determined by the end user.**Theoretical molecular weight** 32kDa**Cellular localization** The nucleus cytoplasmic The cell membrane**Form** Liquid**Concentration** 1mg/ml**immunogen** Recombinant human CDK5.**Lsotype** IgG1, κ **Purification** affinity purified by Protein G**Buffer Solution** 1M TBS(pH7.4) with 1% BSA, 3% Proclin300 and 50% Glycerol.**Storage** Shipped at 4°C. Store at -20 °C for one year. Avoid repeated freeze/thaw cycles.**Attention** This product as supplied is intended for research use only, not for use in human, therapeutic or d
applications.

PubMed

[PubMed](#)

This gene encodes a proline-directed serine/threonine kinase that is a member of the cyclin-dependent family of proteins. Unlike other members of the family, the protein encoded by this gene does not control cell cycle regulation. Instead the protein, which is predominantly expressed at high levels in mammalian postmitotic central nervous system neurons, functions in diverse processes such as synaptic plasticity and neuronal migration through phosphorylation of proteins required for cytoskeletal organization, endocytosis and exocytosis, and apoptosis. In humans, an allelic variant of the gene that results in undetectable levels of the protein has been associated with lethal autosomal recessive lissencephaly. Alternative splicing results in multiple transcript variants. [provided by RefSeq, May 2015]

Function:

Proline-directed serine/threonine-protein kinase essential for neuronal cell cycle arrest and differentiation and may be involved in apoptotic cell death in neuronal diseases by triggering abortive cell cycle re-entry. Interacts with D1 and D3-type G1 cyclins. Phosphorylates SRC, NOS3, VIM/vimentin, p35/CDK5, MEF2A, SIPA1L1, SH3GLB1, PXN, PAK1, MCAM/MUC18, SEPT5, SYN1, DNM1, AMPH, CDK16, RAC1, RHOA, CDC42, TONEBP/NFAT5, MAPT/TAU, MAP1B, histone H1, p53/TP53, APEX1, PTK2/FAK1, huntingtin/HTT, ATM, MAP2, NEFH and NEFM. Regulates several neuronal development and physiological processes including neuronal survival, migration and differentiation and neurite growth, synaptogenesis, oligodendrocyte differentiation, synaptic plasticity and neurotransmission, by phosphorylating key proteins. Activated by interaction with CDK5R1 (p35) and ATP6V0D1 (p39), especially in post-mitotic neurons, and promotes CDK5R1 (p35) expression in an autostimulation loop. Phosphorylates many downstream substrates such as Rho and Ras family small GTPases (e.g. PAK1, RAC1, RHOA, CDC42) or microtubule-binding proteins (e.g. MAPT/TAU, MAP1B), and modulates actin dynamics to regulate neurite growth and/or spine morphogenesis. Phosphorylates also exocytosis associated proteins such as MCAM/MUC18, SEPT5, SYN1, and CDK16/PCTAIRE1 as well as endocytosis associated proteins such as DNM1, AMPH and SYN1 at synaptic terminals. In the mature central nervous system (CNS), regulates neurotransmitter movement by phosphorylating substrates associated with neurotransmitter release and synapse plasticity; synaptogenesis, exocytosis, vesicles fusion with the presynaptic membrane, and endocytosis. Promotes cell survival by activating anti-apoptotic proteins BCL2 and STAT3, and negatively regulating of JNK3/MAPK3. Phosphorylation of p53/TP53 in response to genotoxic and oxidative stresses enhances its stability by preventing ubiquitin ligase-mediated proteasomal degradation, and induces transactivation of p53 target genes, thus regulating apoptosis. Phosphorylation of p35/CDK5R1 enhances its stabilization by preventing calpain-mediated proteolysis producing p25/CDK5R1 and avoiding ubiquitin ligase-mediated proteasomal degradation. During aberrant cell-cycle activity and DNA damage, p25/CDK5R1 activates cell-cycle activity and double-strand DNA breaks that precedes neuronal death by deregulating p53. DNA damage triggered phosphorylation of huntingtin/HTT in nuclei of neurons protects neurons from polyglutamine expansion as well as DNA damage mediated toxicity. Phosphorylation of PXN regulates interaction with PTK2/FAK1 in matrix-cell focal adhesions (MCFA) during oligodendrocytes (ODG) differentiation. Negative regulator of Wnt/beta-catenin signaling pathway. Activator of the GAIT pathway (IFN-gamma-activated inhibitor of translation) pathway, which suppresses expression of a subset of post-transcriptional regulon of proinflammatory genes in myeloid cells; phosphorylates the linker histone H1 and glutamyl-prolyl tRNA synthetase (EPRS) in a IFN-gamma-dependent manner, the initial event in the formation of the GAIT complex. Phosphorylation of SH3GLB1 is required for autophagy induction in starved cells.

**Product
Detail**

Phosphorylation of TONEBP/NFAT5 in response to osmotic stress mediates its rapid nuclear localization. MEF2 is inactivated by phosphorylation in nucleus in response to neurotoxin, thus leading to neuronal apoptosis. APEX1 AP-endonuclease is repressed by phosphorylation, resulting in accumulation of DNA damage and contributing to neuronal death. NOS3 phosphorylation down regulates NOS3-mediated nitrite (NO) levels. SRC phosphorylation mediates its ubiquitin-dependent degradation and thus cytoskeletal reorganization. May regulate endothelial cell migration and angiogenesis via the molecular lamellipodia formation. Involved in dendritic spine morphogenesis by mediating the EFNA1-EPHA2 signaling.

Subunit:

Heterodimer composed of a catalytic subunit CDK5 and a regulatory subunit CDK5R1 (p25) and a macromolecular complex composed of at least CDK5, CDK5R1 (p35) and CDK5RAP1 or CDK5RAP3. Only the heterodimer shows kinase activity. Under neurotoxic stress and neuronal injury conditions, p35 is cleaved by calpain to generate p25 that hyperactivates CDK5, that becomes functionally disabled and often toxic. Found in a trimolecular complex with CABLES1 and ABL1. Interacts with CABLES1 and CABLES2. Interacts with AATK and GSTP1. Binds to HDAC1 when in complex. Interaction with myristoylation p35 promotes CDK5 association with membranes. Both isoforms interact with beta-catenin/CTNNB1. Interacts with delta-catenin/CTNND2 and APEX1. Interacts with P53/TP53 in neurons. Interacts with EPHA4; may mediate the activation of NGEF by EPHA4. Interacts with PTK2/FAK1.

Subcellular Location:

Isoform 1: Cytoplasm. Cell membrane; Peripheral membrane protein. Perikaryon. Cell projection. lamellipodium. Cell projection, growth cone. Cell junction, synapse, postsynaptic cell membrane, postsynaptic density. Note=In axonal growth cone with extension to the peripheral lamellipodia (similarly). Under neurotoxic stress and neuronal injury conditions, CDK5R (p35) is cleaved by calpain to generate CDK5R1 (p25) in response to increased intracellular calcium. The elevated level of p25 in complex with CDK5, leads to its subcellular misallocation as well as its hyperactivation. Co-localizes with CTNND2 in the cell body of neuronal cells, and with CTNNB1 in the cell-cell contacts and plasma membrane of undifferentiated and differentiated neuroblastoma cells. Reversibly attached to the cell membrane in an inactive form when complexed to dephosphorylated p35 or CDK5R2 (p39), p35 phosphorylation releases this attachment and activates CDK5.

Isoform 2: Nucleus.

Tissue Specificity:

Isoform 1 is ubiquitously expressed. Accumulates in cortical neurons (at protein level). Isoform 2 has been detected in testis, skeletal muscle, colon, bone marrow and ovary.

Post-translational modifications:

Phosphorylation on Tyr-15 by ABL1 and FYN, and on Ser-159 by casein kinase 1 promotes kinase activity. By contrast, phosphorylation at Thr-14 inhibits activity.

Similarity:

Belongs to the protein kinase superfamily. CMGC Ser/Thr protein kinase family. CDC2/CDKX

Contains 1 protein kinase domain.

SWISS:
Q00535

Gene ID:
1020

Database links:

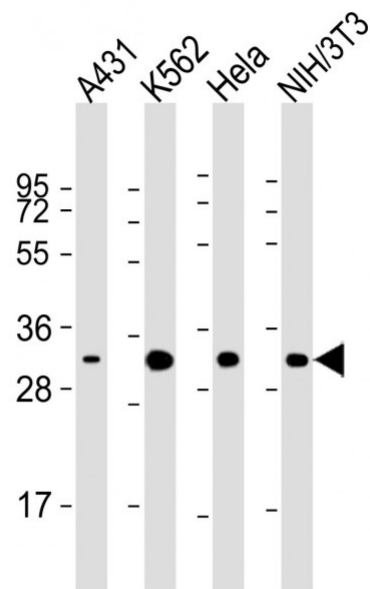
[Entrez Gene: 1020](#) Human

[Entrez Gene: 12568](#) Mouse

[SwissProt: Q00535](#) Human

[SwissProt: P49615](#) Mouse

**Product
Picture**



Sample:

Lane 1: A431 cell lysates

Lane 2: K562 cell lysates

Lane 3: Hela cell lysates

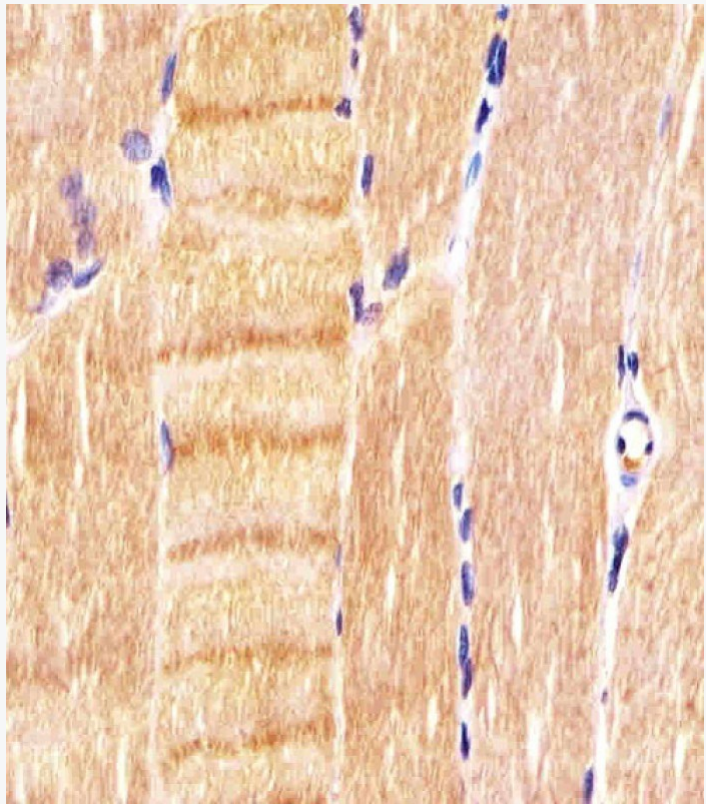
Lane 4: NIH/3T3 cell lysates

Primary: Anti-CDK5 (SLM-51610M) at 1/2000 dilution

Secondary: IRDye800CW Goat Anti-Mouse IgG at 1/20000 dilution

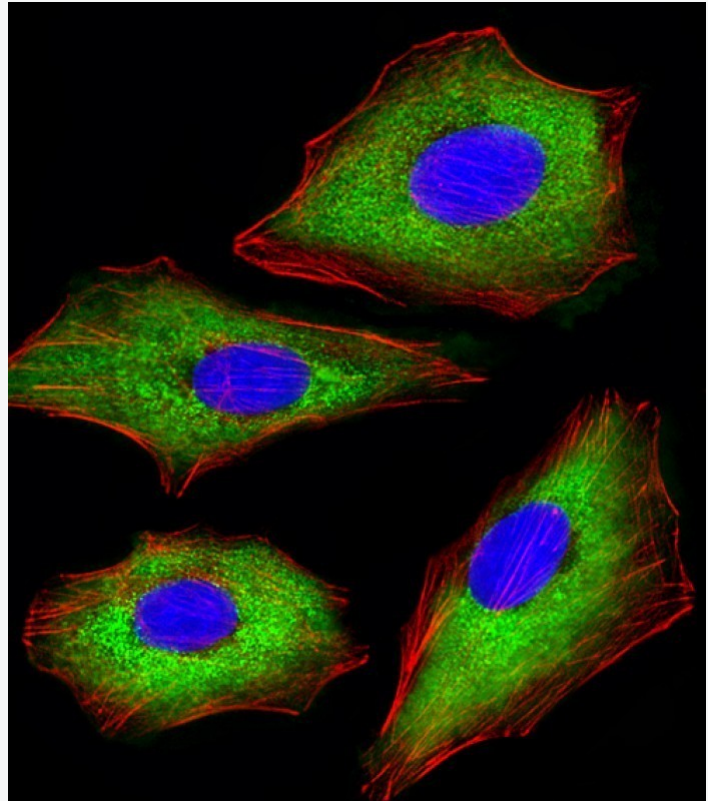
Predicted band size: 32 kD

Observed band size: 32 kD

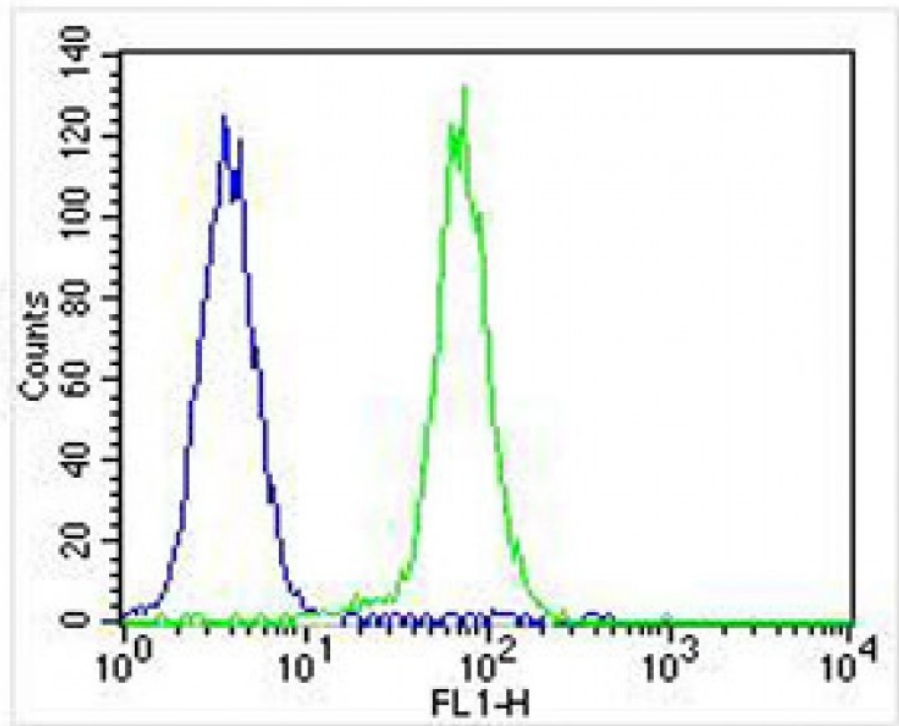


Paraformaldehyde-fixed, paraffin embedded (human skeletal muscle sections); Antigen retrieval by boiling in sodium citrate buffer (pH6.0) for 15min; Block endogenous peroxidase by 3% hydrogen peroxide

peroxide for 20 minutes; Blocking buffer (normal goat serum) at 37°C for 30min; Antibody incubation with (CDK5) Monoclonal Antibody, Unconjugated (SLM-51610M) at 1:200 overnight at 4°C; followed by a conjugated Goat Anti-Mouse IgG antibody at 37°C for 90 minutes, DAPI (blue) was used to stain the cell nuclei, Dylight® 594 Phalloidin (red) was used to stain the cell Cytoplasmic actin.



A549 cell; 4% Paraformaldehyde-fixed; Triton X-100 at room temperature for 20 min; Blocking buffer (normal goat serum) at 37°C for 20 min; Antibody incubation with (CDK5) monoclonal Antibody, Unconjugated (SLM-51610M) 1:25, 90 minutes at 37°C; followed by a conjugated Goat Anti-Mouse IgG antibody at 37°C for 90 minutes, DAPI (blue) was used to stain the cell nuclei, Dylight® 594 Phalloidin (red) was used to stain the cell Cytoplasmic actin.



Blank control:K562.

Primary Antibody (green line): Mouse Anti-CDK5 antibody (SLM-51610M)

Dilution: 1:25;

Isotype Control Antibody (blue line): Mouse IgG Secondary Antibody : Goat anti-mouse IgG

Dilution: 1:400 Protocol

The cells were fixed with 4% PFA (10min at room temperature)and then permeabilized with 95% ice-cold methanol for 20 min at -20°C.The cells were then incubated in 5%BSA to block non-specific protein-protein interactions for 30 min at room temperature .Cells stained with Primary Antibody for 1 hour at room temperature. The secondary antibody used for 40 min at room temperature. Acquisition



SunLong Biotech Co.,LTD
Tel: 0086-571-56623320 Fax:0086-571-56623318
E-mail:sales@sunlongbiotech.com
www.sunlongbiotech.com

20,000 events was performed.