

## Mouse Anti-RBM6 antibody

SLM-51328M

<b>Product Name</b>	RBM6
<b>Chinese Name</b>	RNABinding protein6 单克隆抗体
<b>Alias</b>	RBM6_HUMAN; RNA-binding protein 6; DEF3; DEF-3; 3G2; g16; HLC-11; NY-LU-12; Lung cancer antigen NY-LU-12; Protein G16; RNA-binding motif protein 6; RNA binding motif protein 6; RNA-binding protein DEF-3;
<b>Immunogen Species</b>	Mouse
<b>Clonality</b>	Monoclonal
<b>React Species</b>	Human
<b>Applications</b>	WB=1:500-1000,ELISA=1:5000-10000 not yet tested in other applications. optimal dilutions/concentrations should be determined by the end user.
<b>Theoretical molecular weight</b>	129kDa
<b>Cellular localization</b>	The nucleus
<b>Form</b>	Liquid
<b>Concentration</b>	1mg/ml
<b>immunogen</b>	KLH conjugated synthetic peptide derived from human RBM6
<b>Lsotype</b>	IgG1,k
<b>Purification</b>	affinity purified by Protein A
<b>Buffer Solution</b>	PBS with 9% (W/V) sodium azide.
<b>Storage</b>	Shipped at 4°C. Store at -20 °C for one year. Avoid repeated freeze/thaw cycles.
<b>Attention</b>	This product as supplied is intended for research use only, not for use in human, therapeutic or diagnostic applications.
<b>PubMed</b>	<a href="#">PubMed</a> Enables RNA binding activity. Predicted to be involved in mRNA splicing, via spliceosome. Predicted to be active in nucleus. [provided by Alliance of Genome Resources, Apr 2022]
<b>Product Detail</b>	SWISS:

P78332

**Gene ID:**  
10180

**Database links:**

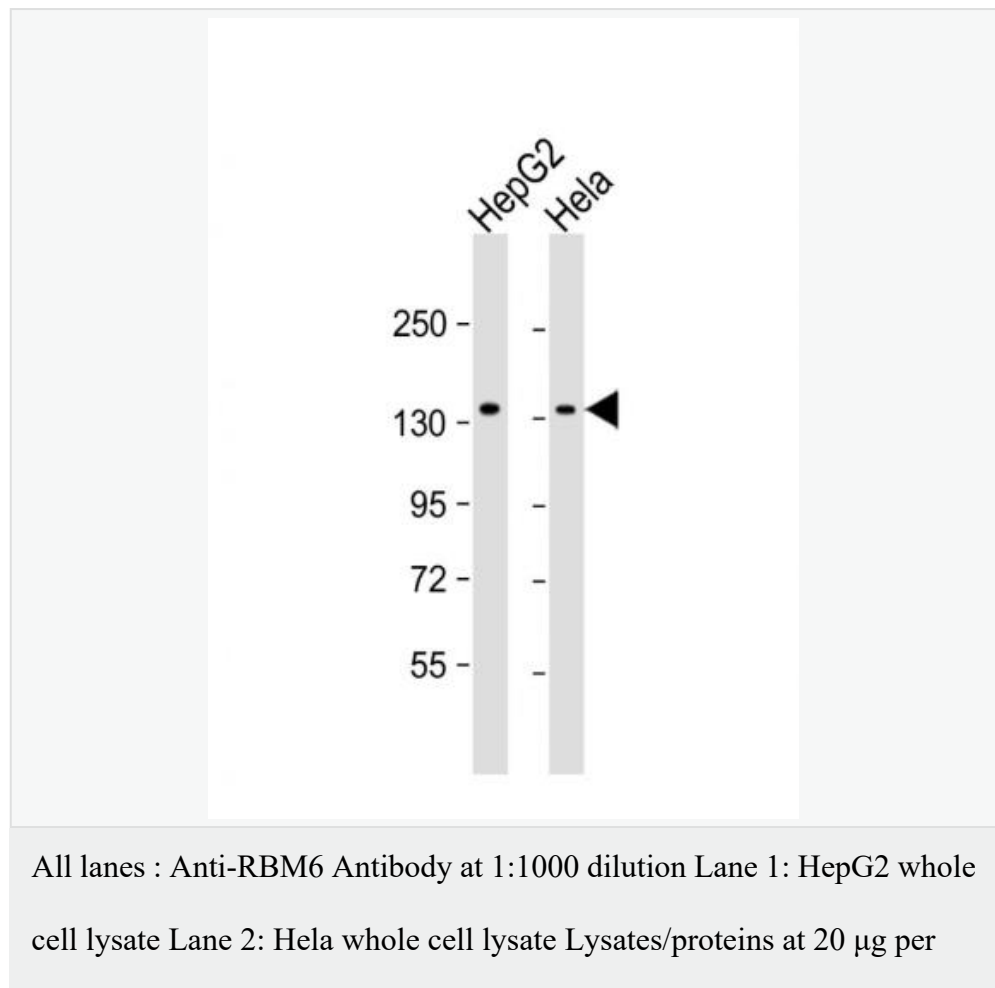
[Entrez Gene: 10180](#) Human

[Entrez Gene: 19654](#) Mouse

[Entrez Gene: 315997](#) Rat

[SwissProt: P78332](#) Human

**Product Picture**





SunLong Biotech Co.,LTD

Tel: 0086-571-56623320 Fax:0086-571-56623318

E-mail:sales@sunlongbiotech.com

www.sunlongbiotech.com

---

lane. Secondary Goat Anti-mouse IgG, (H+L), Peroxidase conjugated at  
1/10000 dilution. Predicted band size : 129 kDa Blocking/Dilution buffer:  
5% NFDM/TBST.