



SUNLONG

SunLong Biotech Co.,LTD

Tel: 0086-571-56623320 Fax:0086-571-56623318

E-mail:sales@sunlongbiotech.com

www.sunlongbiotech.com

Mouse Anti-PGC antibody

SLM-43143M

Product Name PGC

Chinese Name 胃蛋白酶原 C 单克隆抗体

Alias PEPC_HUMAN; Gastricsin; EC:3.4.23.3; Pepsinogen C; PEPC; PGII; progastricsin;

Immunogen Species Mouse

Clonality Monoclonal

React Species Human,Rat,Mouse

Applications IHC-P=1:100-500,WB=1:500-2000,IHC-F=1:100-500,IF=1:100-500
not yet tested in other applications.
optimal dilutions/concentrations should be determined by the end user.

Theoretical molecular weight 42kDa

Detection molecular weight 40 kDa

Cellular localization Secretory protein

Form Lyophilized or Liquid

Concentration 1mg/ml

immunogen Recombinant human PGC protein: 17-388/388

Lsotype IgG

Purification affinity purified by Protein A

Buffer Solution PBS (ph=7.4)

Storage Shipped at 4°C. Store at -20 °C for one year. Avoid repeated freeze/thaw cycles.

Attention This product as supplied is intended for research use only, not for use in human, therapeutic or diagnostic applications.

PubMed [PubMed](#)

Product Detail This gene encodes an aspartic proteinase that belongs to the peptidase family A1. The encoded protein is a digestive enzyme that is produced in the stomach and constitutes a

major component of the gastric mucosa. This protein is also secreted into the serum. This protein is synthesized as an inactive zymogen that includes a highly basic prosegment. This enzyme is converted into its active mature form at low pH by sequential cleavage of the prosegment that is carried out by the enzyme itself. Polymorphisms in this gene are associated with susceptibility to gastric cancers. Serum levels of this enzyme are used as a biomarker for certain gastric diseases including Helicobacter pylori related gastritis. Alternate splicing results in multiple transcript variants. A pseudogene of this gene is found on chromosome 1. [provided by RefSeq, Oct 2009]

Function:

Hydrolyzes a variety of proteins.

Subcellular Location:

Secreted.

Similarity:

Belongs to the peptidase A1 family.

SWISS:

P20142

Gene ID:

5225

Database links:

[Entrez Gene: 5225](#) Human

[Entrez Gene: 24864](#) Rat

[Omim: 169740](#) Human

[SwissProt: P20142](#) Human

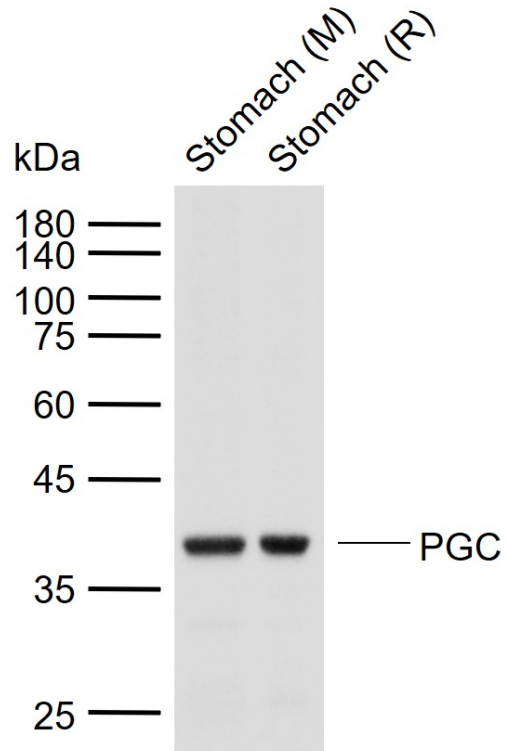
[SwissProt: P04073](#) Rat

[Unigene: 1867](#) Human

[Unigene: 9735](#) Rat

胃蛋白酶原 C(PG-C)主要用于胃癌及其癌前病变易感性的关系。

**Product
Picture**



Sample:

Lane 1: Mouse Stomach tissue lysates

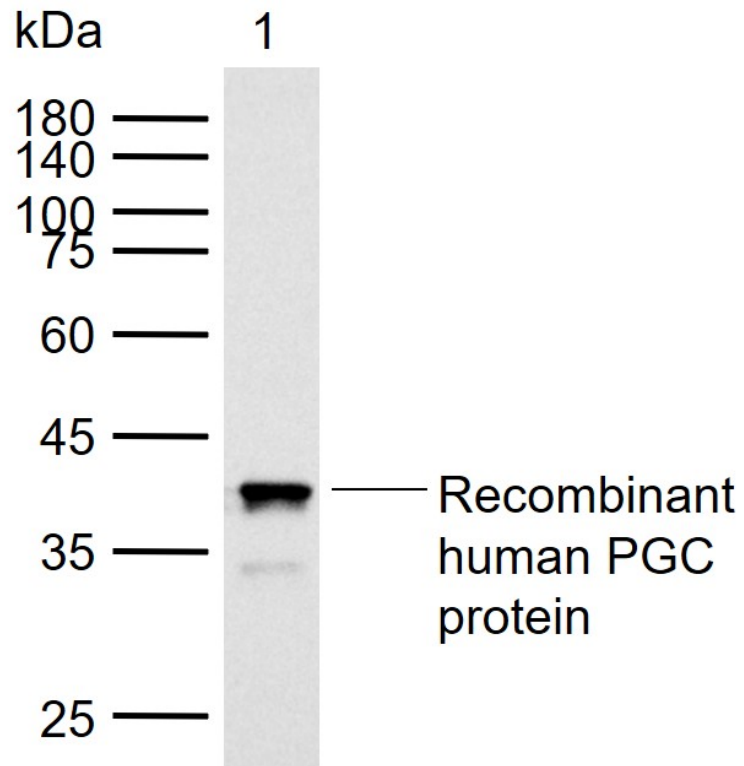
Lane 2: Rat Stomach tissue lysates

Primary: Anti-PGC (SLM-43143M) at 1/1000 dilution

Secondary: Alexa Fluor 790 AffiniPure Goat Anti-Mouse IgG, light chain specific

Predicted band size: 42 kDa

Observed band size: 39 kDa



Sample:

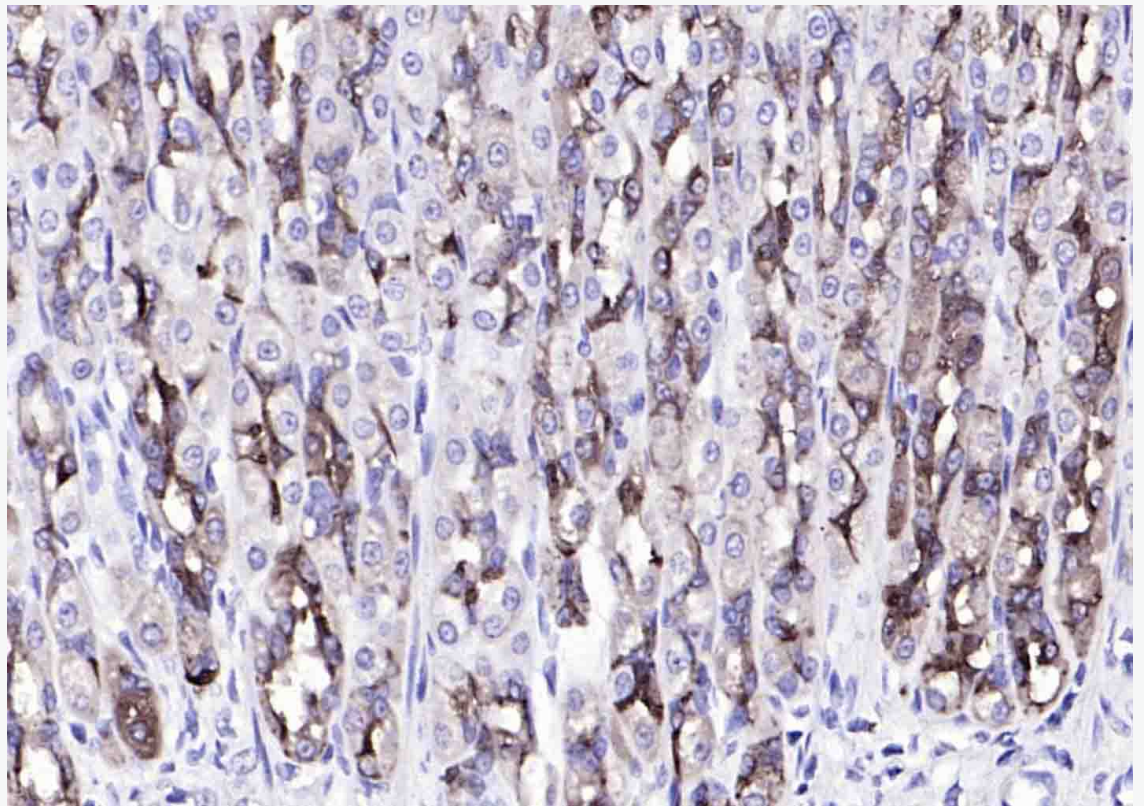
Lane 1: Recombinant human PGC protein, C-His(SL43143P)

Primary: Anti-PGC (SLM-43143M) at 1/1000 dilution

Secondary: IRDye800CW Goat Anti-Mouse IgG at 1/20000 dilution

Predicted band size: 42 kDa

Observed band size: 40 kDa



Paraformaldehyde-fixed, paraffin embedded (rat stomach); Antigen retrieval by boiling in sodium citrate buffer (pH6.0) for 15min; Block endogenous peroxidase by 3% hydrogen peroxide for 20 minutes; Blocking buffer (normal goat serum) at 37°C for 30min; Antibody incubation with (PGC) Monoclonal Antibody, Unconjugated (SLM-43143M) at 1:200 overnight at 4°C, followed by operating according to SP Kit(Mouse)(sp-0024) instructions and DAB staining.