



Mouse Anti-MUC16 antibody

SLM-43121M

Product Name MUC16

Chinese Name 卵巢癌抗原单克隆抗体

Alias CA 125; CA-125; CA125 ovarian cancer antigen; Cancer antigen 125; FLJ14303; MUC16_HUMAN; Mucin 16; MUC-16; Mucin 16 cell surface associated; Mucin16; Ovarian cancer related tumor marker CA125; Ovarian carcinoma antigen CA125; Ovarian cancer-related tumor marker CA125

Research Area Tumour Signal transduction lymphocyte b-lymphocyte Cytoskeleton TumourCell biologyMakers

Immunogen Species Mouse

Clonality Monoclonal

React Species Human,
WB=1:500-2000,ICC/IF=1:50-200,Flow-Cyt=1µg/Test,IHC-P=1:100-500,IHC-F=1:100-500,IF=1:100-500

Applications not yet tested in other applications.
optimal dilutions/concentrations should be determined by the end user.

Theoretical molecular weight 200kDa

Cellular localization The cell membrane Secretory protein

Form Liquid

Concentration 1mg/ml

immunogen Recombinant human MUC16 Protein: 12660-12923/14507

Lsotype IgG

Purification affinity purified by Protein A

Storage Shipped at 4°C. Store at -20 °C for one year. Avoid repeated freeze/thaw cycles.

Attention This product as supplied is intended for research use only, not for use in human, therapeutic or diagnostic applications.

PubMed [PubMed](#)

Product Detail MUC16 (CA125) is a serum marker that is used routinely in gynecologic practice to monitor patients with ovarian cancer. It is a müllerian duct differentiation antigen that is overexpressed in epithelial ovarian cancer cells and secreted into the blood, although its expression is not entirely confined to ovarian cancer.



biochemical studies have concluded that MUC16 is a high molecular mass glycoprotein, although of its size range from 200 to 2000 kDa with smaller “subunits” being described by some investigators.

SWISS:
Q8WXI7

Gene ID:
94025

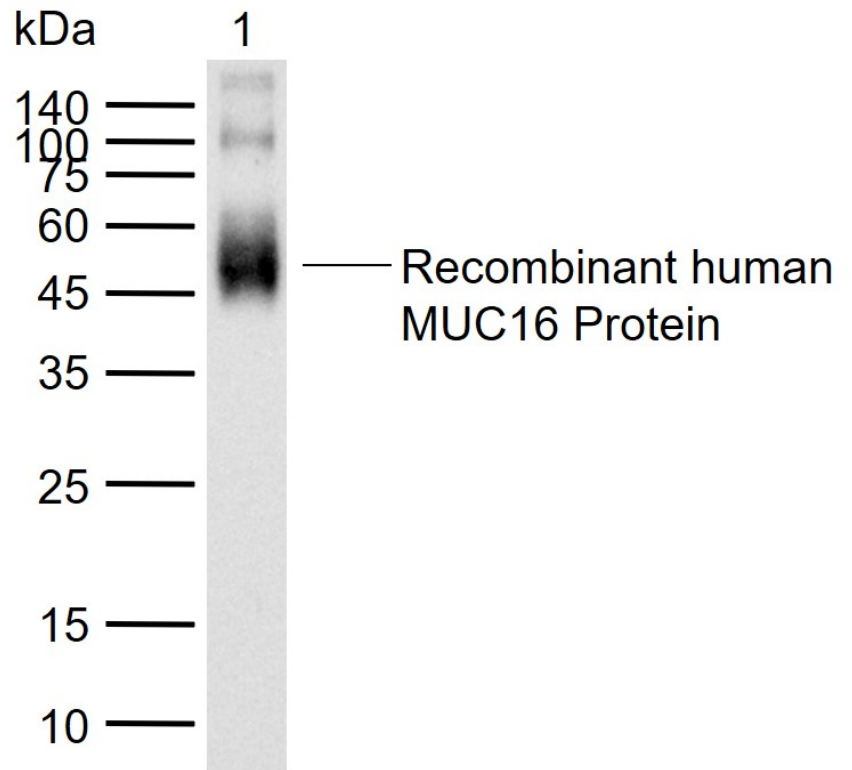
Database links:

[Entrez Gene: 94025](#) Human

[SwissProt: Q8WXI7](#) Human

[Unigene: 432676](#) Human

**Product
Picture**



Sample:

Lane 1: Recombinant human MUC16 Protein, C-His-Avi (HEK293)(SL43121P)

Primary: Anti-MUC16 (SLM-43121M) at 1/1000 dilution

Secondary: IRDye800CW Goat Anti-Mouse IgG at 1/20000 dilution

Predicted band size: 200 kDa

Observed band size: 50 kDa