

Mouse Anti-PRL antibody

SLM-43099M

Product Name PRL

Chinese Name 泌乳素单克隆抗体

Alias Luteotropic Hormone; Mamotropin; OTTHUMP00000017727; PRL; Prolactin; Prolactin precursor; PRL_HUMAN

Research Area Cell biology Signal transduction Growth factors and hormones Kinases and Phosphatases Endocrinopathy

Immunogen Species Mouse

Clonality Monoclonal

React Species Human

Applications IHC-P=1:100-500,IHC-F=1:100-500,IF=1:100-500 (Paraffin sections need antigen repair)
not yet tested in other applications.
optimal dilutions/concentrations should be determined by the end user.

Theoretical molecular weight 24kDa

Cellular localization Secretory protein

Form Liquid

Concentration 1mg/ml

immunogen Recombinant human PRL protein: 29-227/227

Lsotype IgG

Purification affinity purified by Protein A

Buffer Solution PBS

Storage Shipped at 4°C. Store at -20 °C for one year. Avoid repeated freeze/thaw cycles.

Attention This product as supplied is intended for research use only, not for use in human, therapeutic or diagnostic applications.

PubMed [PubMed](#)

Product This gene encodes the anterior pituitary hormone prolactin. This secreted

Detail

hormone is a growth regulator for many tissues, including cells of the immune system. It may also play a role in cell survival by suppressing apoptosis, and it is essential for lactation. Alternative splicing results in multiple transcript variants that encode the same protein. [provided by RefSeq, Aug 2011].

SWISS:
P01236

Gene ID:
5617

Database links:

[Entrez Gene: 5617](#) Human

[Entrez Gene: 19109](#) Mouse

[Entrez Gene: 24683](#) Rat

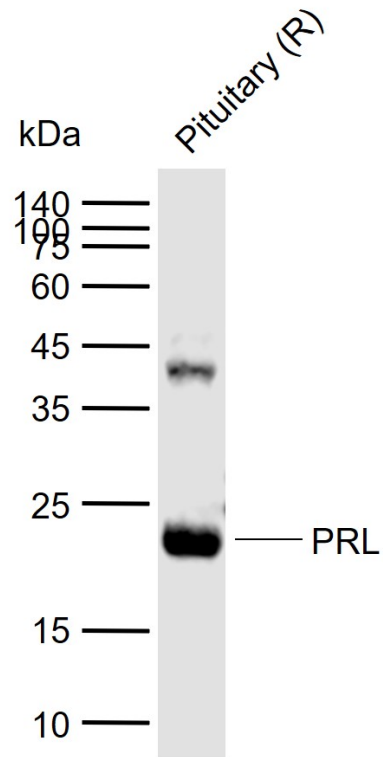
[Omim: 176760](#) Human

[SwissProt: P01236](#) Human

[SwissProt: P06879](#) Mouse

[SwissProt: P01237](#) Rat

**Product
Picture**



Sample:

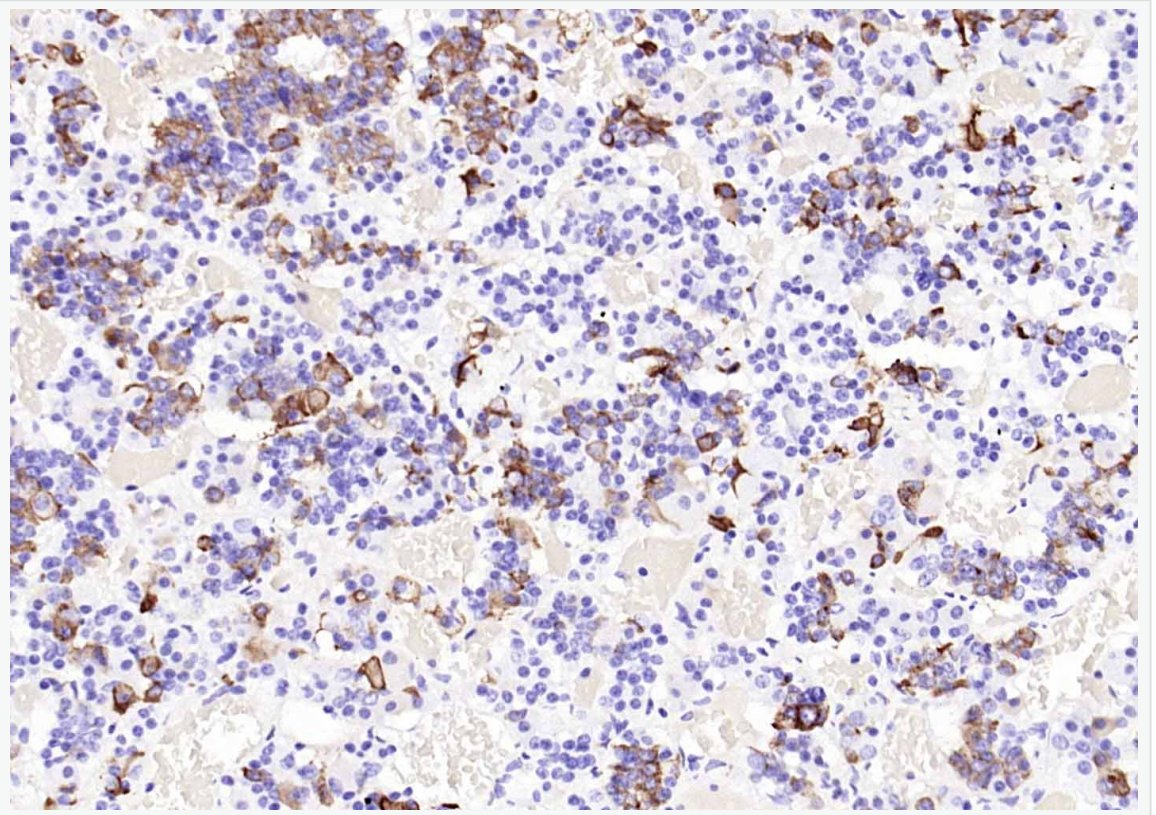
Lane 1: Rat Pituitary tissue lysates

Primary: Anti-PRL (SLM-43099M) at 1/1000 dilution

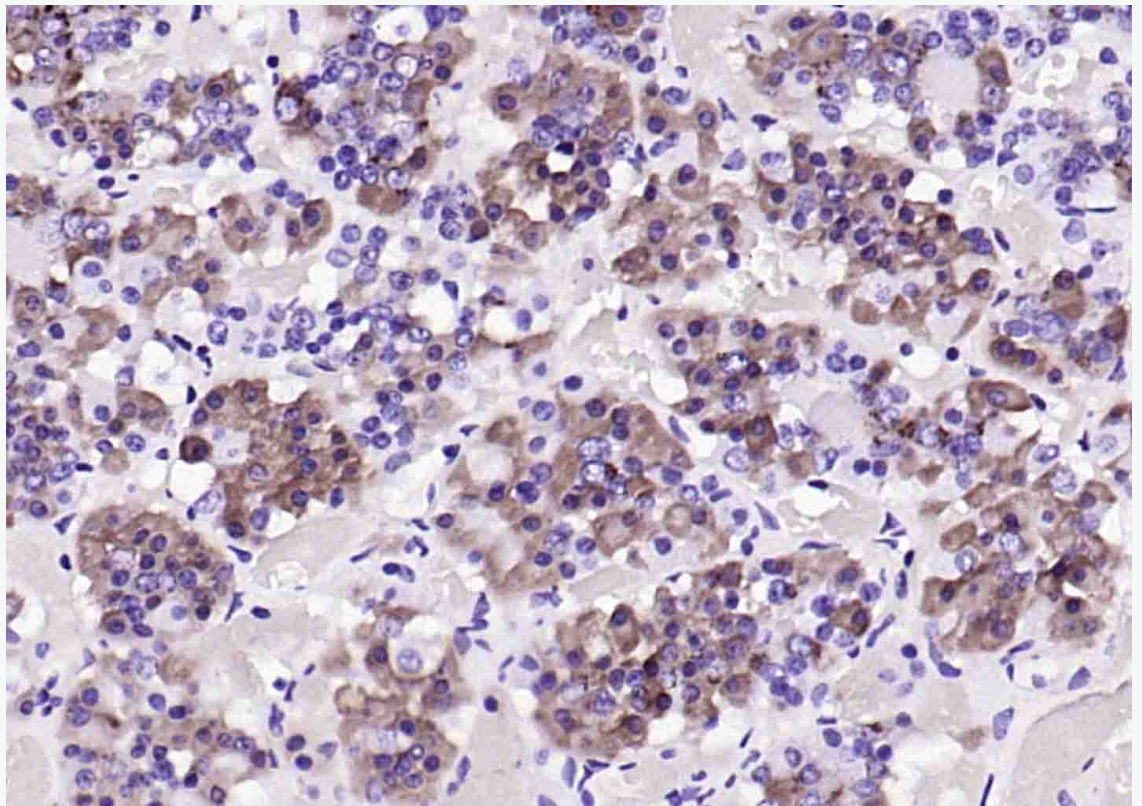
Secondary: IRDye800CW Goat Anti-Mouse IgG at 1/20000 dilution

Predicted band size: 24 kDa

Observed band size: 23 kDa



Paraformaldehyde-fixed, paraffin embedded (human pituitary); Antigen retrieval by boiling in sodium citrate buffer (pH6.0) for 15min; Block endogenous peroxidase by 3% hydrogen peroxide for 20 minutes; Blocking buffer (normal goat serum) at 37°C for 30min; Antibody incubation with (PRL) Monoclonal Antibody, Unconjugated (SLM-43099M) at 1:200 overnight at 4°C, followed by operating according to SP Kit(Mouse)(sp-0024) instructions and DAB staining.



Paraformaldehyde-fixed, paraffin embedded (human pituitary); Antigen retrieval by boiling in sodium citrate buffer (pH6.0) for 15min; Block endogenous peroxidase by 3% hydrogen peroxide for 20 minutes; Blocking buffer (normal goat serum) at 37°C for 30min; Antibody incubation with (PRL) Monoclonal Antibody, Unconjugated (SLM-43099M) at 1:200 overnight at 4°C, followed by operating according to SP Kit(Mouse)(sp-0024) instructions and DAB staining.