

Mouse Anti-proBNP antibody

SLM-43095M

Product Name	proBNP
Chinese Name	脑纳素前体单克隆抗体
Alias	BNP 32; BNP(1-28); BNP(1-29); BNP(1-30); BNP(1-32); BNP(2-31); BNP(3-29); BNP(3-30); BNP(3-32); BNP(4-27); BNP(4-29); BNP(4-30); BNP(4-31); BNP(4-32); BNP(5-29); BNP(5-31); BNP(5-32); Brain natriuretic peptide 32; Brain type natriuretic peptide; Gamma brain natriuretic peptide; Natriuretic peptide B; Natriuretic peptide brain type; Natriuretic peptide precursor B; natriuretic peptide, brain type; ANFB_HUMAN; Natriuretic peptides B; natriuretic protein; NPPB; NPPB protein.
Immunogen Species	Mouse
Clonality	Monoclonal
React Species	Human, WB=1:500-2000
Applications	not yet tested in other applications. optimal dilutions/concentrations should be determined by the end user.
Theoretical molecular weight	8.5kDa
Detection molecular weight	10 kDa
Cellular localization	Secretory protein
Form	Lyophilized or Liquid
Concentration	1mg/ml
immunogen	Recombinant human proBNP protein: 27-134/134
Lsotype	IgG
Purification	affinity purified by Protein A
Buffer Solution	PBS(pH=7.4)
Storage	Shipped at 4°C. Store at -20 °C for one year. Avoid repeated freeze/thaw cycles.

Attention

This product as supplied is intended for research use only, not for use in human, therapeutic or diagnostic applications.

PubMed

[PubMed](#)

This gene is a member of the natriuretic peptide family and encodes a secreted protein which functions as a cardiac hormone. The protein undergoes two cleavage events, one within the cell and a second after secretion into the blood. The protein's biological actions include natriuresis, diuresis, vasorelaxation, inhibition of renin and aldosterone secretion, and a key role in cardiovascular homeostasis. A high concentration of this protein in the bloodstream is indicative of heart failure. Mutations in this gene have been associated with postmenopausal osteoporosis. [provided by RefSeq].

Function:

Cardiac hormone which may function as a paracrine antifibrotic factor in the heart. Also plays a key role in cardiovascular homeostasis through natriuresis, diuresis, vasorelaxation, and inhibition of renin and aldosterone secretion. Specifically binds and stimulates the cGMP production of the NPR1 receptor. Binds the clearance receptor NPR3.

Subcellular Location:

Secreted.

Tissue Specificity:

Product Detail Brain and also in atria, but at much lower levels than ANP.

Similarity:

Belongs to the natriuretic peptide family.

SWISS:

P16860

Gene ID:

4879

Database links:

[Entrez Gene: 4879](#) Human

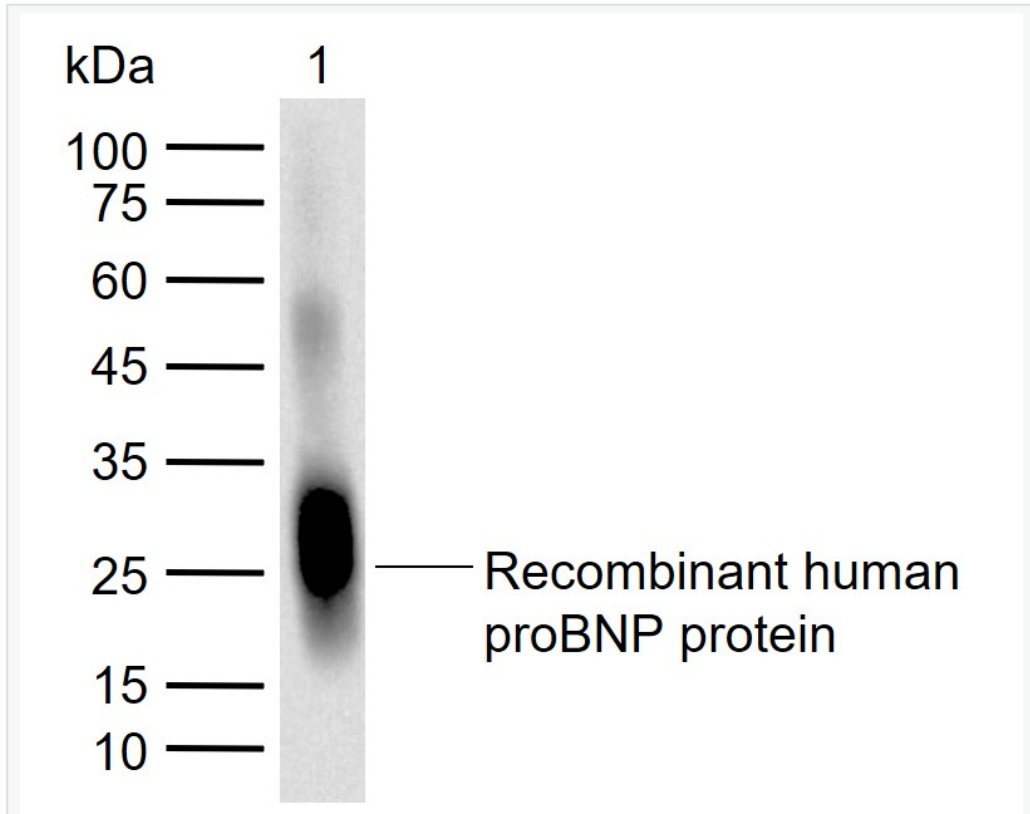
[Omid: 600295](#) Human

[SwissProt: P16860](#) Human

[Unigene: 219140](#) Human

应用推荐 (Capture-Detection) : V3305-V3306

Product
Picture



Sample:

Lane 1: Recombinant human proBNP protein, N-His (HEK293)(SL43095P)

Primary: Anti-proBNP (SLM-43095M) at 1/1000 dilution

Secondary: IRDye800CW Goat Anti-Mouse IgG at 1/20000 dilution

Predicted band size: 8.5 kDa

Observed band size: 25 kDa