

Mouse Anti-beta 2 Microglobulin antibody

SLM-43094M

Product Name	beta 2 Microglobulin
Chinese Name	β2-微球蛋白单克隆抗体
Alias	B2M; Beta 2 microglobulin precursor; Beta-2 Microglobulin; Beta chain of mhc class 1 proteins; Hdcma22p; B2MG_HUMAN; Beta 2 microglobin; Beta 2 microglobulin precursor; Beta chain of mhc class 1 proteins; Beta chain of MHC class I molecules; Beta-2-microglobulin form pI 5.3; CDABP0092.
Research Area	Tumour Cardiovascular TumourCell biologyMaker
Immunogen Species	Mouse
Clonality	Monoclonal
React Species	Human
Applications	WB=1:500-2000 not yet tested in other applications. optimal dilutions/concentrations should be determined by the end user.
Theoretical molecular weight	12kDa
Cellular localization	Secretory protein
Form	Liquid
Concentration	1mg/ml
immunogen	Recombinant human Beta-2-microglobulin: 21-119/119
Lsotype	IgG
Purification	affinity purified by Protein A
Buffer Solution	PBS
Storage	Shipped at 4°C. Store at -20 °C for one year. Avoid repeated freeze/thaw cycles.
Attention	This product as supplied is intended for research use only, not for use in human, therapeutic or diagnostic applications.
PubMed	PubMed
Product Detail	This gene encodes a serum protein found in association with the major

histocompatibility complex (MHC) class I heavy chain on the surface of nearly all nucleated cells. The protein has a predominantly beta-pleated sheet structure that can form amyloid fibrils in some pathological conditions. A mutation in this gene has been shown to result in hypercatabolic hypoproteinemia.[provided by RefSeq, Sep 2009].

SWISS:
P61769

Gene ID:
567

Database links:

[Entrez Gene: 567](#) Human

[Entrez Gene: 12010](#) Mouse

[Entrez Gene: 24223](#) Rat

[Omir: 109700](#) Human

[SwissProt: P61769](#) Human

[SwissProt: P01887](#) Mouse

[SwissProt: P07151](#) Rat

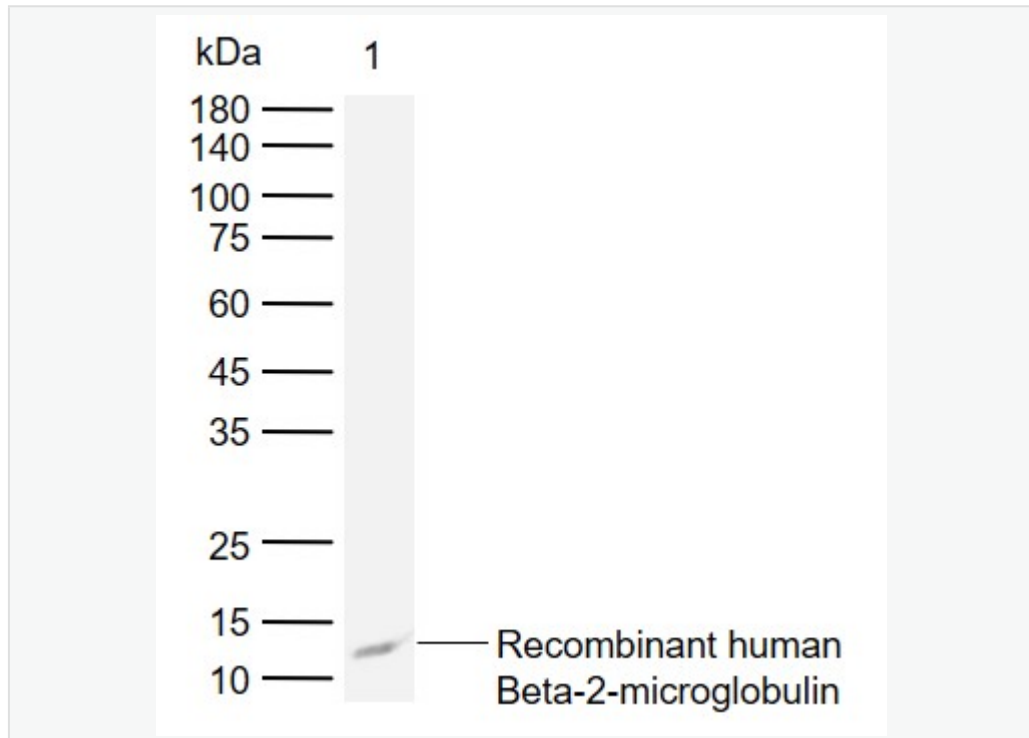
[Unigene: 534255](#) Human

[Unigene: 702947](#) Human

[Unigene: 163](#) Mouse

[Unigene: 1868](#) Rat

**Product
Picture**



Sample:

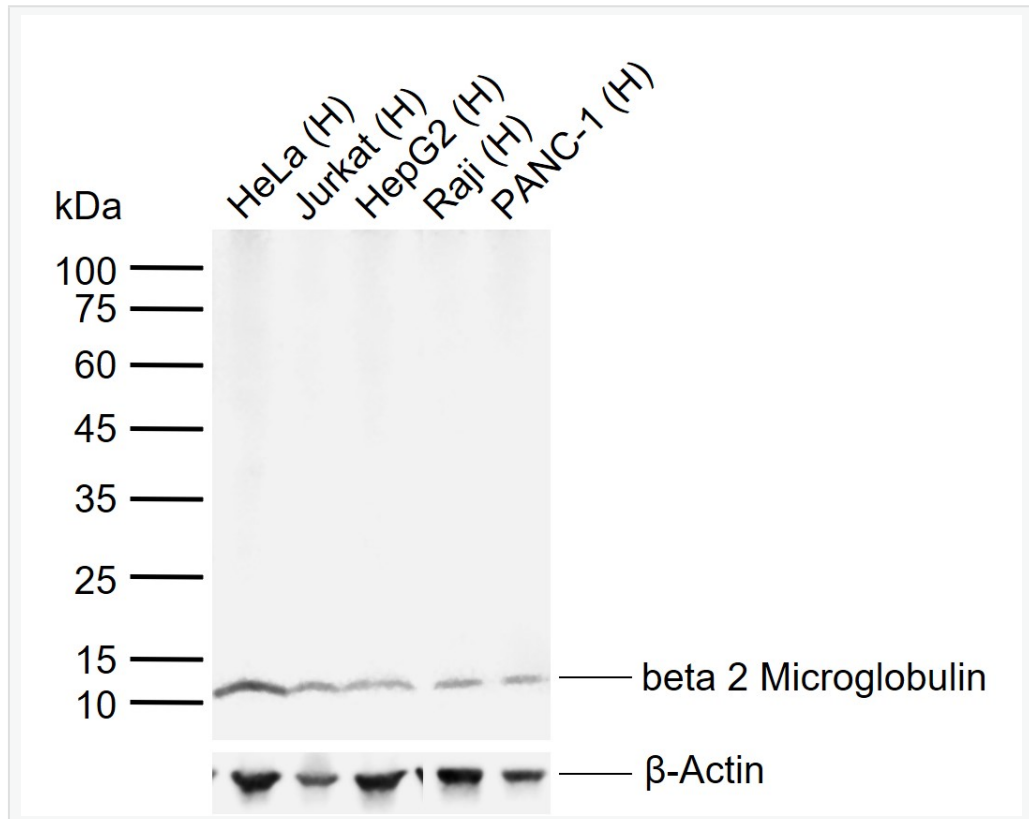
Lane 1: Recombinant human Beta-2-microglobulin, C-His (HEK293)

Primary: Anti-beta 2 Microglobulin (SLM-43094M) at 1/1000 dilution

Secondary: IRDye800CW Goat Anti-Mouse IgG at 1/20000 dilution

Predicted band size: 12 kDa

Observed band size: 12 kDa



Sample:

Lane 1: Human HeLa cell lysates

Lane 2: Human Jurkat cell lysates

Lane 3: Human HepG2 cell lysates

Lane 4: Human Raji cell lysates

Lane 5: Human PANC-1 cell lysates

Primary: Anti-beta 2 Microglobulin (SLM-43094M) at 1/1000 dilution

Secondary: IRDye800CW Goat Anti-Mouse IgG at 1/20000 dilution

Predicted band size: 12 kDa



SunLong Biotech Co.,LTD
Tel: 0086-571-56623320 Fax:0086-571-56623318
E-mail:sales@sunlongbiotech.com
www.sunlongbiotech.com

Observed band size: 12 kDa