

Mouse Anti-Human CGA antibody

SLM-43075M

Product Name	Human CGA
Chinese Name	人绒毛膜促性腺激素 α 亚基单克隆抗体
Alias	GLHA_HUMAN; Glycoprotein hormones alpha chain; Anterior pituitary glycoprotein hormones common subunit alpha; HCG; LHA; FSHA; GPA1; GPHa; TSHA; GPHA1; Choriogonadotropin alpha chain; Chorionic gonadotrophin subunit alpha (CG-alpha); Follicle-stimulating hormone alpha chain (FSH-alpha); Follitropin alpha chain; Luteinizing hormone alpha chain (LSH-alpha); Lutropin alpha chain; Thyroid-stimulating hormone alpha chain (TSH-alpha); Thyrotropin alpha chain; glycoprotein hormones, alpha polypeptide; HCG alpha;
Research Area	Tumour immunology Growth factors and hormones
Immunogen Species	Mouse
Clonality	Monoclonal
React Species	Human
Applications	WB=1:500-2000,IHC-P=1:100-500,IHC-F=1:400-800,IF=1:100-500 not yet tested in other applications. optimal dilutions/concentrations should be determined by the end user.
Theoretical molecular weight	13kDa
Form	Liquid
immunogen	Recombinant Human FSH Protein: 25-116/116
Lsotype	IgG
Purification	affinity purified by Protein A
Buffer Solution	1M PBS(pH7.4)
Storage	Shipped at 4°C. Store at -20 °C for one year. Avoid repeated freeze/thaw cycles.
Attention	This product as supplied is intended for research use only, not for use in human, therapeutic

or diagnostic applications.

PubMed

[PubMed](#)

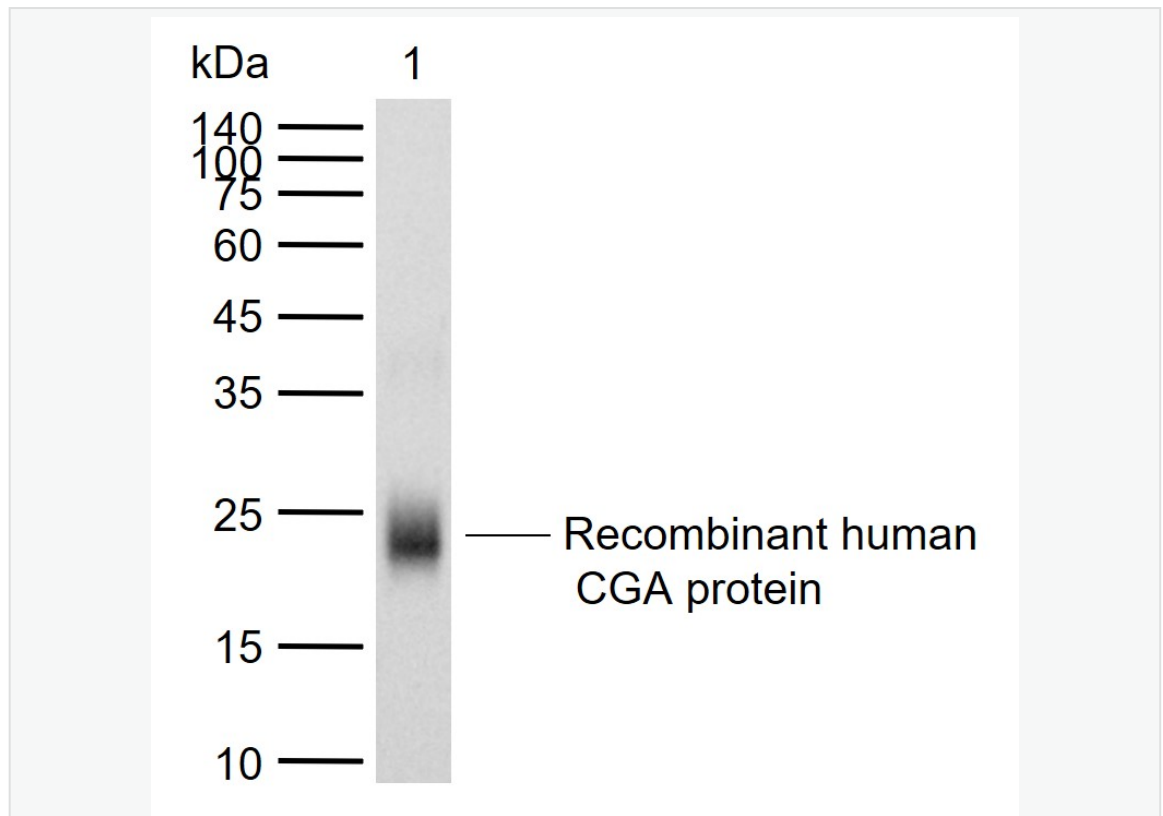
The four human glycoprotein hormones chorionic gonadotropin (CG), luteinizing hormone (LH), follicle stimulating hormone (FSH), and thyroid stimulating hormone (TSH) are dimers consisting of alpha and beta subunits that are associated noncovalently. The alpha subunits of these hormones are identical, however, their beta chains are unique and confer biological specificity. The protein encoded by this gene is the alpha subunit and belongs to the glycoprotein hormones alpha chain family. Two transcript variants encoding different isoforms have been found for this gene. [provided by RefSeq, Nov 2011]

Product Detail

SWISS:
P01215

Gene ID:
1081

Product Picture



Sample:

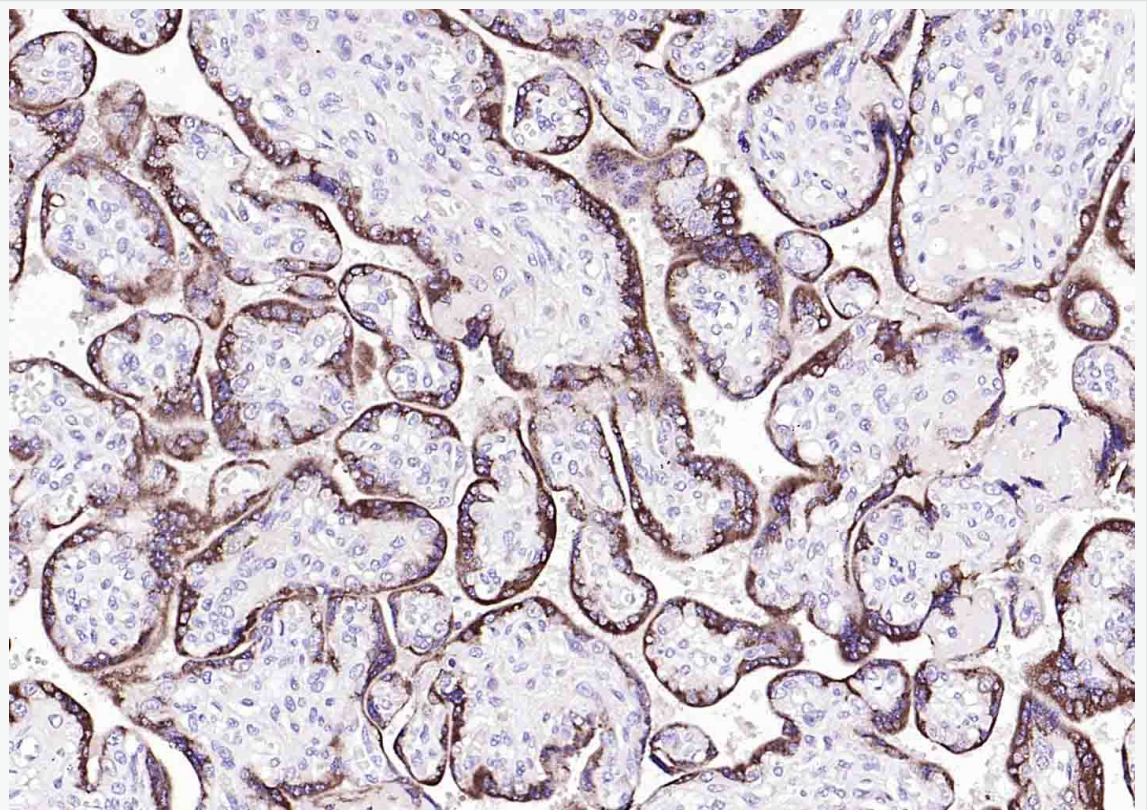
Lane 1: Recombinant human CGA protein, His (HEK293)(SL43075P)

Primary: Anti-Human CGA (SLM-43075M) at 1/1000 dilution

Secondary: IRDye800CW Goat Anti-Mouse IgG at 1/20000 dilution

Predicted band size: 13 kDa

Observed band size: 23 kDa



Paraformaldehyde-fixed, paraffin embedded (human placenta); Antigen retrieval by boiling in sodium citrate buffer (pH6.0) for 15min; Block endogenous peroxidase by 3% hydrogen peroxide for 20 minutes; Blocking buffer (normal goat serum) at 37°C for 30min; Incubation with (Human CGA) Monoclonal Antibody, Unconjugated (SLM-43075M) at 1:200 overnight at 4°C, followed by operating according to SP



SunLong Biotech Co.,LTD
Tel: 0086-571-56623320 Fax:0086-571-56623318
E-mail:sales@sunlongbiotech.com
www.sunlongbiotech.com

Kit(Mouse)(sp-0024) instructionsand DAB staining.