

Mouse Anti-ESM1 antibody

SLM-42106M

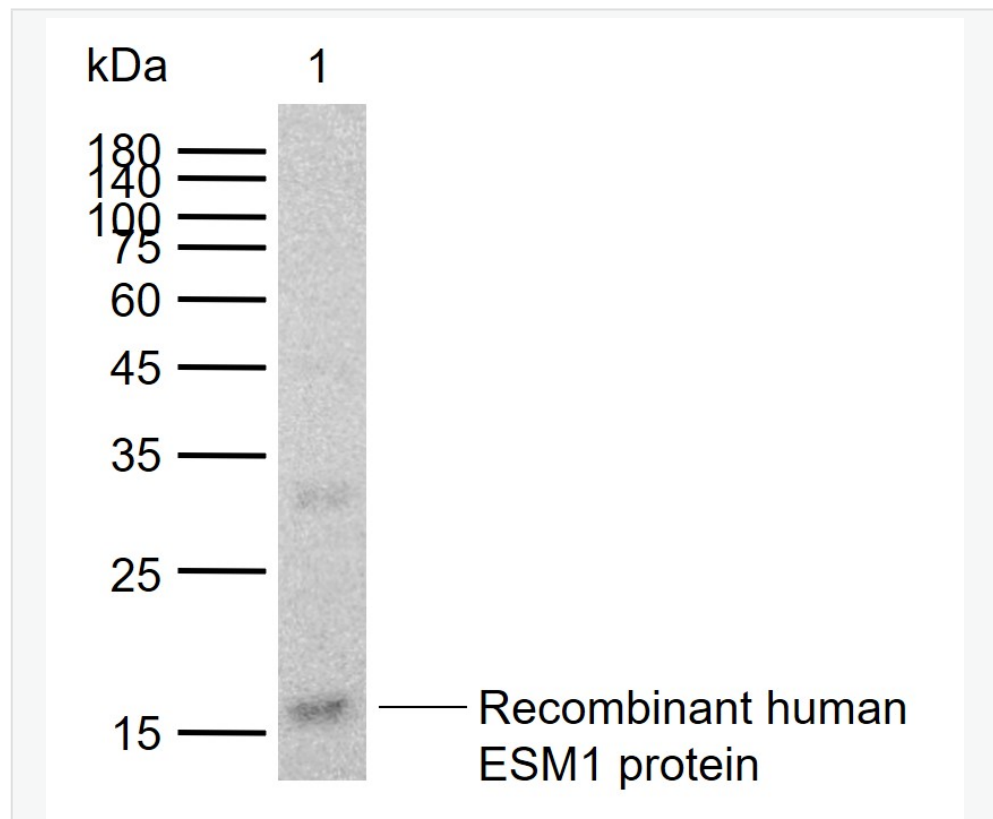
Product Name	ESM1
Chinese Name	endothelial cells 特异性分子 1 单克隆抗体
Alias	Endocan; Endothelial cell specific molecule 1; ESM 1; ESM-1; ESM 1 secretory protein; ESM1 secretory protein; ESM1_HUMAN; Endothelial cell-specific molecule 1.
Research Area	Cardiovascular immunology Cell adhesion molecule endothelial cells
Immunogen Species	Mouse
Clonality	Monoclonal
React Species	Human(predicted:Mouse,Rat)
Applications	WB=1:500-2000 not yet tested in other applications. optimal dilutions/concentrations should be determined by the end user.
Theoretical molecular weight	20kDa
Cellular localization	Secretory protein
Form	Liquid
Concentration	1mg/ml
immunogen	Recombinant human ESM1 protein: 22-184/184
Lsotype	IgG
Purification	affinity purified by Protein A
Buffer Solution	1M TBS(pH7.4) with 1% BSA, 3% Proclin300 and 50% Glycerol.
Storage	Shipped at 4°C. Store at -20 °C for one year. Avoid repeated freeze/thaw cycles.
Attention	This product as supplied is intended for research use only, not for use in human, therapeutic or diagnostic applications.
PubMed	PubMed
Product Detail	ESM1 is a secreted dermatan sulfate proteoglycan which is predominantly expressed in the endothelial cells in human lung and kidney tissues. Expression of ESM1 is regulated by cytokines. ESM1 may have a role in lung

endothelial cell-leukocyte interactions. The transcript contains multiple polyadenylation and mRNA instability signals. Two transcript variants encoding different isoforms have been found for this gene.

SWISS:
Q9NQ30

Gene ID:
11082

Product Picture



Sample:

Lane 1: Recombinant human ESM1 protein, N-His(SL42106P)

Primary: Anti-ESM1 (SLM-42106M) at 1/1000 dilution

Secondary: IRDye800CW Goat Anti-Mouse IgG at 1/20000 dilution

Predicted band size: 20 kDa



SunLong Biotech Co.,LTD
Tel: 0086-571-56623320 Fax:0086-571-56623318
E-mail:sales@sunlongbiotech.com
www.sunlongbiotech.com

Observed band size: 17 kDa