

Mouse Anti-Alpha-synuclein antibody

SLM-42005M

Product Name	Alpha-synuclein
Chinese Name	核突触蛋白单克隆抗体
Alias	SNCA; SYUA_HUMAN; Alpha synuclein; Alpha-synuclein, isoform NACP140; alpha SYN; MGC105443; MGC110988; MGC127560; MGC64356; NACP; Non A beta component of AD amyloid; Non A4 component of amyloid precursor; Non-A-beta component of alzheimers disease amyloid , precursor of; Non-A beta component of AD amyloid; Non-A4 component of amyloid precursor; PARK 1; PARK 4; PARK1; PARK4; Parkinson disease (autosomal dominant, Lewy body) 4; Parkinson disease familial 1; Syn; Snca synuclein, alpha (non A4 component of amyloid precursor); Synuclein alpha; Synuclein, alpha (non A4 component of amyloid precursor); Synuclein- α ; Synuclein α . α -Synuclein; α Synuclein; Synuclein α .
Research Area	Cell biology Neurobiology
Immunogen Species	Mouse
Clonality	Monoclonal
React Species	Human
Applications	WB=1:500-2000,IHC-P=1:100-500,IHC-F=1:100-500,IF=1:100-500 not yet tested in other applications. optimal dilutions/concentrations should be determined by the end user.
Theoretical molecular weight	14kDa
Cellular localization	The nucleus cytoplasmic The cell membrane
Form	Liquid
immunogen	Recombinant human Alpha-synuclein: 1-140/140
Lsotype	IgG
Purification	affinity purified by Protein A
Buffer Solution	Human1M TBS(pH7.4) with 1% BSA, Human3% Proclin300 and 50% Glycerol.
Storage	Shipped at 4°C. Store at -20 °C for one year. Avoid repeated freeze/thaw cycles.

Attention

This product as supplied is intended for research use only, not for use in human, therapeutic or diagnostic applications.

PubMed

[PubMed](#)

Alpha-synuclein is a member of the synuclein family, which also includes beta- and gamma-synuclein. Synucleins are abundantly expressed in the brain and alpha- and beta-synuclein inhibit phospholipase D2 selectively. SNCA may serve to integrate presynaptic signaling and membrane trafficking. Defects in SNCA have been implicated in the pathogenesis of Parkinson disease. SNCA peptides are a major component of amyloid plaques in the brains of patients with Alzheimer's disease. Alternatively spliced transcripts encoding different isoforms have been identified for this gene. [provided by RefSeq, Feb 2016]

SWISS:
P37840

Gene ID:
6622

Database links:

Product Detail

[Entrez Gene: 6622](#) Human

[Entrez Gene: 20617](#) Mouse

[Entrez Gene: 29219](#) Rat

[Omim: 163890](#) Human

[SwissProt: P37840](#) Human

[SwissProt: O55042](#) Mouse

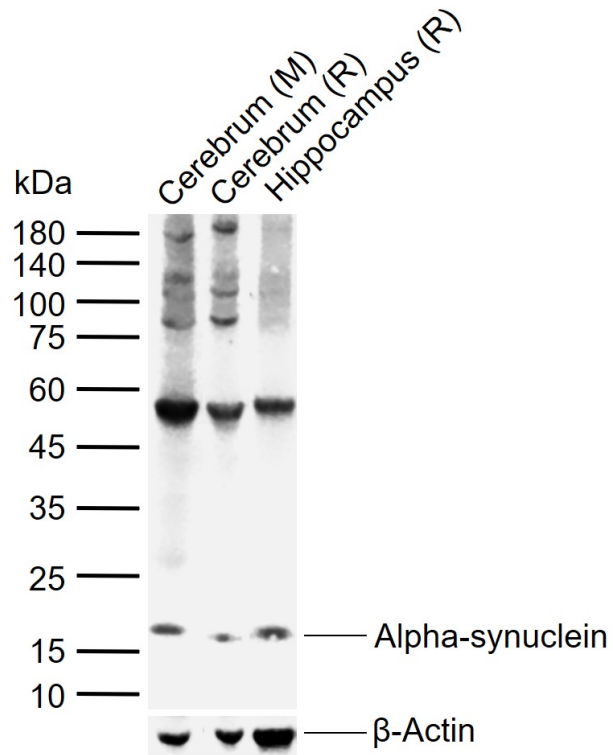
[SwissProt: P37377](#) Rat

[Unigene: 21374](#) Human

[Unigene: 17484](#) Mouse

[Unigene: 1827](#) Rat

Product Picture



Sample:

Lane 1: Mouse Cerebrum tissue lysates

Lane 2: Rat Cerebrum tissue lysates

Lane 3: Rat Hippocampus tissue lysates

Primary: Anti-Alpha-synuclein (SLM-42005M) at 1/1000 dilution

Secondary: IRDye800CW Goat Anti-Mouse IgG at 1/20000 dilution

Predicted band size: 14 kDa

Observed band size: 17 kDa