



SUNLONG

SunLong Biotech Co.,LTD

Tel: 0086-571-56623320 Fax:0086-571-56623318

E-mail:sales@sunlongbiotech.com

www.sunlongbiotech.com

Mouse Anti-Human S100B antibody

SLM-41680M

Product Name	Human S100B
Chinese Name	人 S100B 蛋白单克隆抗体
Alias	NEF; Protein S100 B; Protein S100-B; S 100 calcium binding protein beta chain; S 100 protein beta subunit; S-100 protein beta chain; S-100 protein subunit beta; S100; S100 calcium binding protein B; S100 calcium binding protein beta (neural); S100 calcium binding protein beta S100 calcium-binding protein B; S100 protein beta chain; S100B_HUMAN; S100beta; S100 β ; S100 β .
Research Area	Tumour Cell biology Neurobiology Cyclin Cell differentiation
Immunogen Species	Mouse
Clonality	Monoclonal
Clone NO.	7F3
React Species	Human, WB=1:500-2000,ELISA=1:5000-10000
Applications	not yet tested in other applications. optimal dilutions/concentrations should be determined by the end user.
Theoretical molecular weight	10kDa
Cellular localization	The nucleus cytoplasmic
Form	Liquid
immunogen	Recombinant human S100B protein: 1-92/92
Lsotype	IgG1
Purification	affinity purified by Protein A
Buffer Solution	1M PBS(pH7.4)
Storage	Shipped at 4°C. Store at -20 °C for one year. Avoid repeated freeze/thaw cycles.



Attention

This product as supplied is intended for research use only, not for use in human, therapeutic or diagnostic applications.

PubMed

[PubMed](#)

S100 beta is a member of the S100 family of proteins containing 2 EF-hand calcium binding motifs. These proteins are localized in the cytoplasm and/or nucleus of a wide range of cells, and involved in the regulation of a number of cellular processes such as cell cycle progression and differentiation. S100 proteins include at least 13 members which are located as a cluster on chromosome 1q21; however, this gene is located at 21q22.3. This protein may function in neurite extension, proliferation of melanoma cells, stimulation of Ca²⁺ fluxes, inhibition of PKC mediated phosphorylation, astrocytosis and axonal growth, proliferation, and inhibition of microtubule assembly. Chromosomal rearrangements and altered expression of this gene have been implicated in several neurological, neoplastic, and other types of diseases, including Alzheimer's disease, Down's syndrome, epilepsy, amyotrophic lateral sclerosis, melanoma, and type 2 diabetes.

Function:

Weakly binds calcium but binds zinc very tightly-distinct binding sites with different affinities exist on each monomer. Physiological concentrations of potassium ion antagonize the binding of bivalent cations, especially affecting high-affinity calcium-binding sites. Binds to and initiates the activation of STK38 by releasing autoinhibitory intramolecular interactions within the kinase. Interaction with AGER after myocardial infarction may play a role in myocyte apoptosis by activating ERK1/p53/TP53 signaling.

Product Detail

Subunit:

Dimer of either two alpha chains, or two beta chains, or one alpha and one beta chain. The S100B binds two molecules of STK38 (By similarity). The S100B dimer interacts with two molecules of C

Subcellular Location:

Cytoplasm. Nucleus.

Tissue Specificity:

Although predominant among the water-soluble brain proteins, S100 is also found in a variety of other tissues.

Similarity:

Belongs to the S-101 family.
Contains 2 EF-hand domains.

SWISS:

P04271

Gene ID:

6285

Database links:

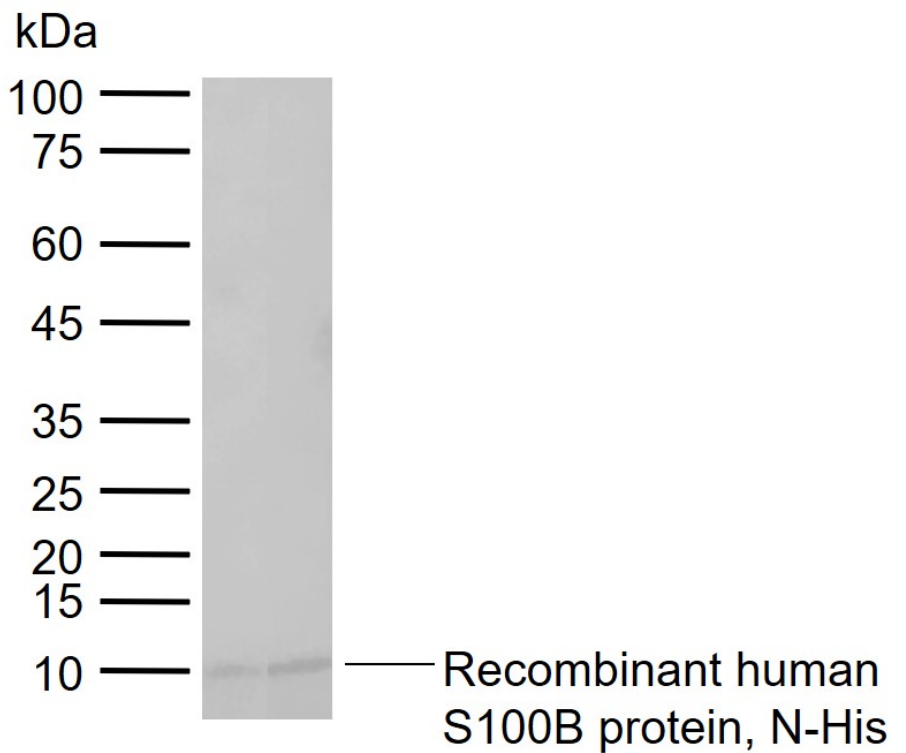
[Entrez Gene: 6285](#) Human

[Omin: 176990](#) Human

[SwissProt: P04271](#) Human

[Unigene: 422181](#) Human

**Product
Picture**



Sample:

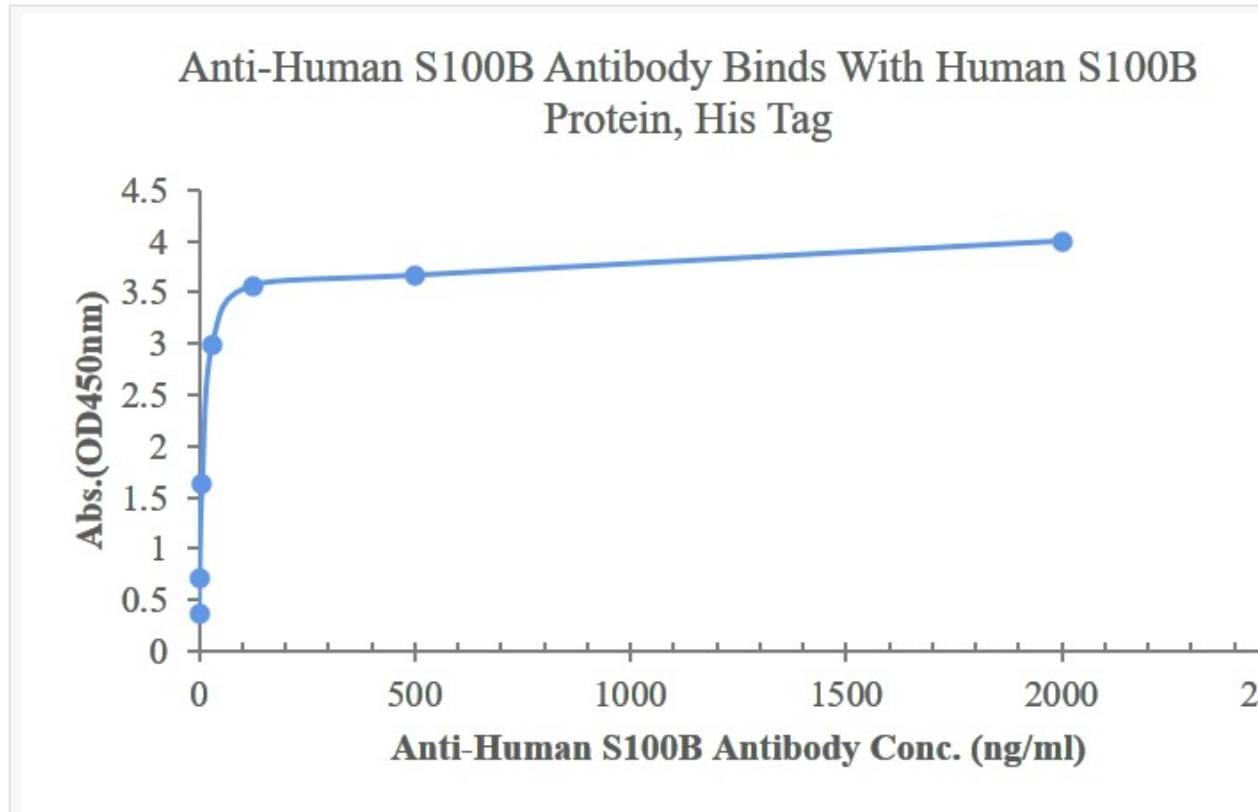
Lane 1: Recombinant human S100B protein, N-His

Primary: Anti-Human S100B (SLM-41680M) at 1/1000 dilution

Secondary: IRDye800CW Goat Anti-Mouse IgG at 1/20000 dilution

Predicted band size: 10 kDa

Observed band size: 10 kDa



Measured by its binding ability in a indirect ELISA. Immobilized Human S100B, His Tag (Cat. SL41191P) at 2 $\mu\text{g}/\text{mL}$ (100 $\mu\text{L}/\text{well}$) can bind Anti-Human S100B monoclonal antibody, the minimum detection concentration is 0.2ng/mL