

Mouse Anti-NAPSIN A antibody

SLM-34153M

Product Name NAPSIN A

Chinese Name 天冬氨酸蛋白酶 ASP4 抗体

Alias NAPSIN A; Asp 4; ASP4; Aspartyl protease 4; KAP; Kdap; Kidney derived aspartic protease like protein; NAP1; NAPA; Napsa; NAPSA_HUMAN; Napsin 1; napsin A aspartic peptidase; Napsin A precursor; Napsin-1; Napsin-A; Pronapsin A; SNAPA; TA01/TA02.

Immunogen Species Mouse

Clonality Monoclonal

Clone NO. 10A12

React Species Human,Mouse,Rat

Applications IHC-P=1:100-500, IHC-F=1:100-500, IF=1:50-200
optimal dilutions/concentrations should be determined by the end user.

Theoretical molecular weight 39kDa

Cellular localization Secretory protein

Form Lyophilized or Liquid

Concentration 1mg/ml

immunogen KLH conjugated synthetic peptide derived from mouse NAPSIN A

Lsotype IgG1/kappa

Purification affinity purified by Protein A

Buffer Solution Liquid in PBS containing 50% glycerol, 0.5% BSA and Human,Mouse,Rat2% sodium azide.

Storage Shipped at 4°C. Store at -20 °C for one year. Avoid repeated freeze/thaw cycles.

Attention This product as supplied is intended for research use only, not for use in human, therapeutic or diagnostic applications.

PubMed [PubMed](#)

Product Napsin A is an aspartic proteinase that belongs to the peptidase A1 family and plays a role

Detail

in pneumocyte surfactant processing. It is a 420-amino acid polypeptide consisting of a 24-residue signal peptide, a 40-amino acid propeptide, the mature enzyme of 336 amino acids, and a C-terminal extension of 18 residues. The mature Napsin A protein contains 3 predicted disulfide bonds, 3 potential N-linked oligosaccharide attachment sites, an RGD motif, a recognition motif for integrin binding, in the C terminus, immediately before a 4-amino acid insert that is unique to aspartic proteinases. Highest levels of Napsin A have been detected in adult lung (type II pneumocytes), fetal lung, and kidney tissues. Napsin A is also expressed at lower levels in adult spleen and at very low levels in peripheral blood leukocytes. Human napsin A shares 72.6% sequence identity with the mouse homolog.

Function:

May be involved in processing of pneumocyte surfactant precursors.

Subcellular Location:

Secreted (Potential).

Tissue Specificity:

Expressed predominantly in adult lung (type II pneumocytes) and kidney and in fetal lung. Low levels in adult spleen and very low levels in peripheral blood leukocytes.

Similarity:

Belongs to the peptidase A1 family.

SWISS:

O09043

Gene ID:

16541

Database links:

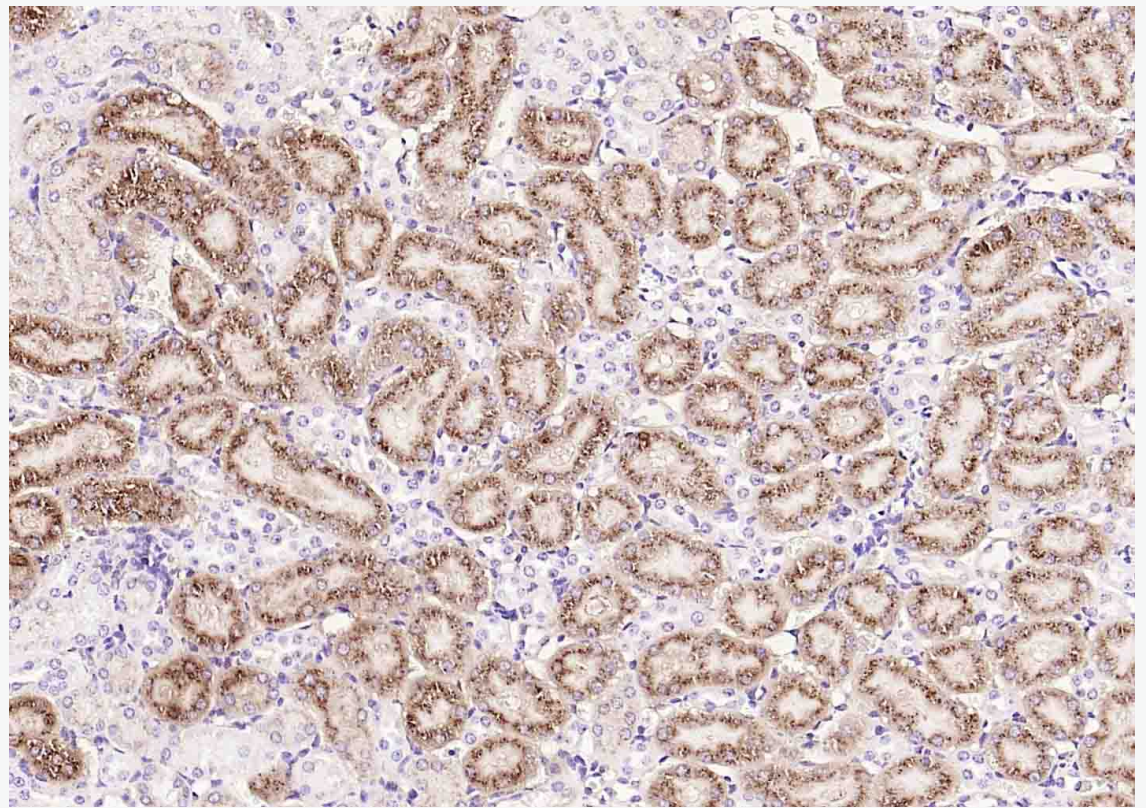
[Entrez Gene: 9476](#) Human

[Omim: 605631](#) Human

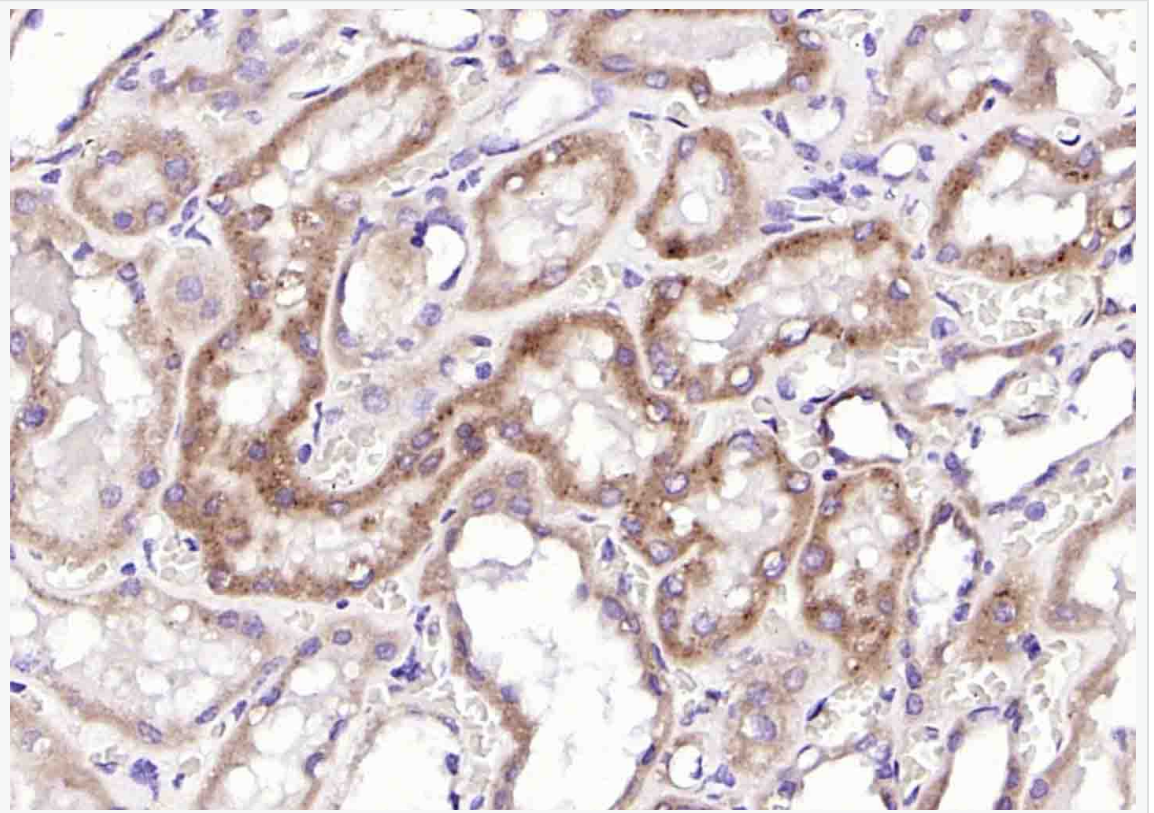
[SwissProt: O96009](#) Human

[Unigene: 512843](#) Human

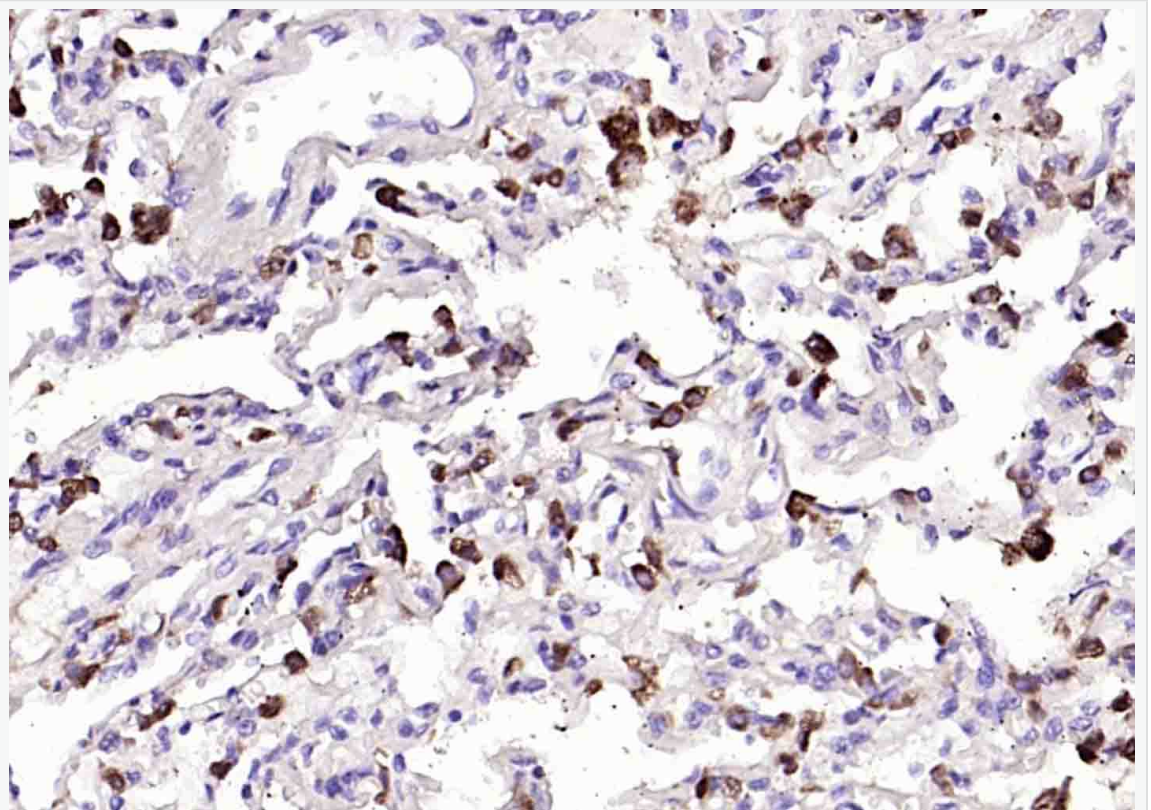
**Product
Picture**



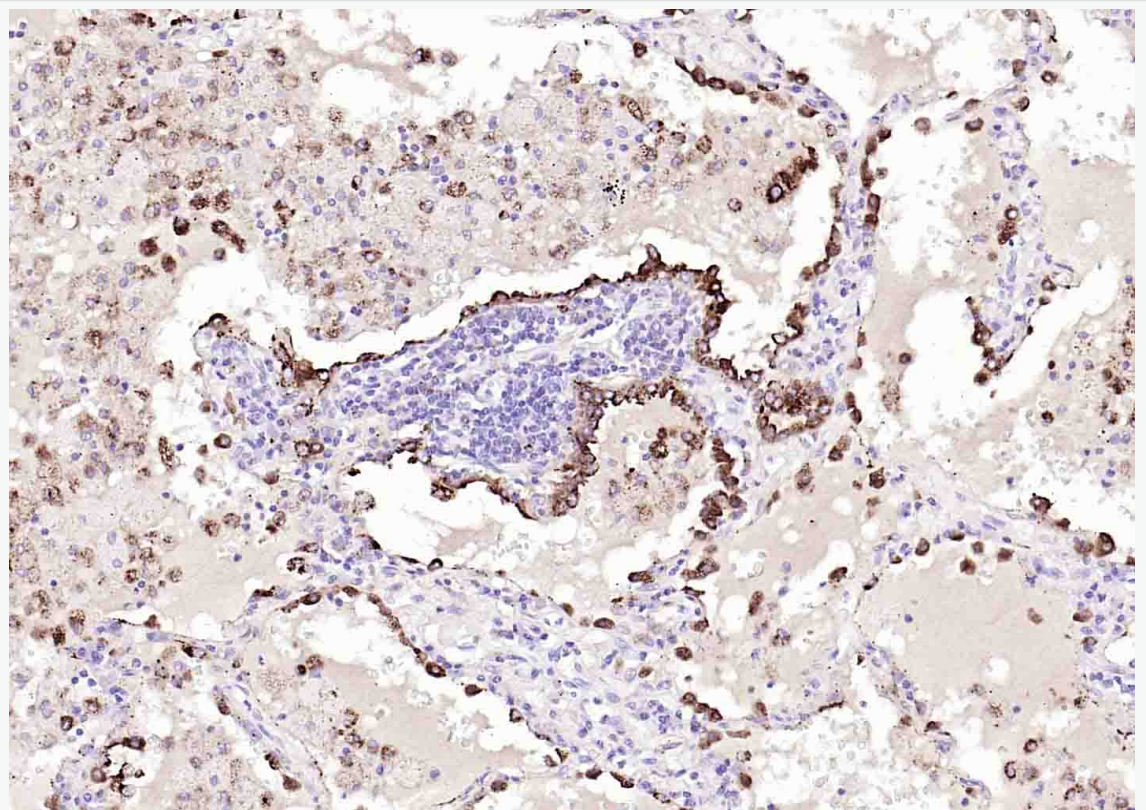
Paraformaldehyde-fixed, paraffin embedded (mouse kidney); Antigen retrieval by boiling in sodium citrate buffer (pH6.0) for 15min; Block endogenous peroxidase by 3% hydrogen peroxide for 20 minutes; Blocking buffer (normal goat serum) at 37°C for 30min; Incubation with (NAPSIN A) Monoclonal Antibody, Unconjugated (SLM-34153M) at 1:200 overnight at 4°C, followed by operating according to SP Kit(Mouse)(sp-0024) instructions and DAB staining.



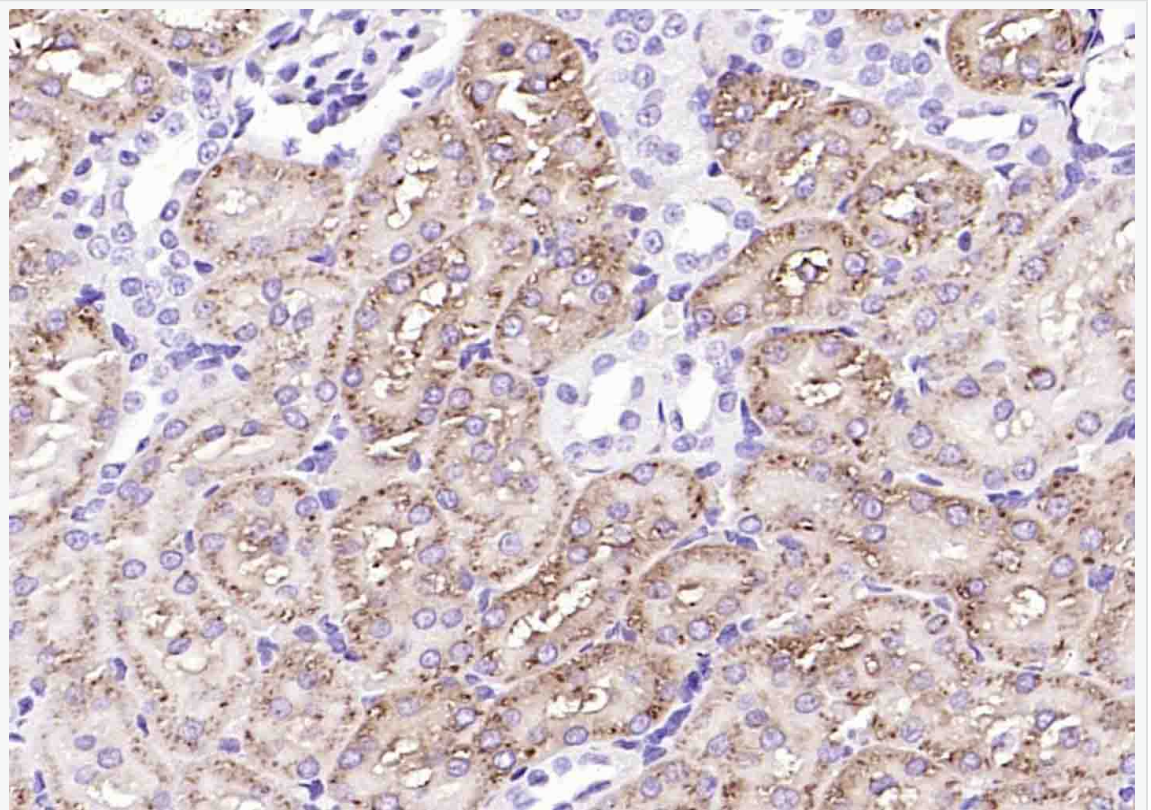
Paraformaldehyde-fixed, paraffin embedded (human kidney); Antigen retrieval by boiling in sodium citrate buffer (pH6.0) for 15min; Block endogenous peroxidase by 3% hydrogen peroxide for 20 minutes; Blocking buffer (normal goat serum) at 37°C for 30min; Incubation with (NAPSIN A) Monoclonal Antibody, Unconjugated (SLM-34153M) at 1:200 overnight at 4°C, followed by operating according to SP Kit(Mouse)(sp-0024) instructions and DAB staining.



Paraformaldehyde-fixed, paraffin embedded (human lung); Antigen retrieval by boiling in sodium citrate buffer (pH6.0) for 15min; Block endogenous peroxidase by 3% hydrogen peroxide for 20 minutes; Blocking buffer (normal goat serum) at 37°C for 30min; Incubation with (NAPSIN A) Monoclonal Antibody, Unconjugated (SLM-34153M) at 1:200 overnight at 4°C, followed by operating according to SP Kit(Mouse)(sp-0024) instructions and DAB staining.



Paraformaldehyde-fixed, paraffin embedded (human lung carcinoma); Antigen retrieval by boiling in sodium citrate buffer (pH6.0) for 15min; Block endogenous peroxidase by 3% hydrogen peroxide for 20 minutes; Blocking buffer (normal goat serum) at 37°C for 30min; Incubation with (NAPSIN A) Monoclonal Antibody, Unconjugated (SLM-34153M) at 1:200 overnight at 4°C, followed by operating according to SP Kit(Mouse)(sp-0024) instructions and DAB staining.



Paraformaldehyde-fixed, paraffin embedded (rat kidney); Antigen retrieval by boiling in sodium citrate buffer (pH6.0) for 15min; Block endogenous peroxidase by 3% hydrogen peroxide for 20 minutes; Blocking buffer (normal goat serum) at 37°C for 30min; Incubation with (NAPSIN A) Monoclonal Antibody, Unconjugated (SLM-34153M) at 1:200 overnight at 4°C, followed by operating according to SP Kit(Mouse)(sp-0024) instructions and DAB staining.