

Mouse Anti-Cytokeratin 15 antibody

SLM-34123M

Product Name Cytokeratin 15

Chinese Name 细胞角蛋白 15 单克隆抗体

Alias K1C15_HUMAN; Cytokeratin-15; CK 15; CK-15; CK15; K15; K1CO; Keratin 15; Keratin 15 basic; Keratin 15 beta; Keratin complex 1 acidic gene 15; Keratin type I cytoskeletal 15; Keratin15; KRT 15; KRTB; KRTL15; keratin-15, basic; Type I cytoskeletal 15.

Research Area Cell biology Signal transduction Cytoskeleton

Immunogen Species Mouse

Clonality Monoclonal

React Species Human,Rat

Applications IHC-P=1:200-800,IHC-F=1:200-800,IF=1:200-800 (Paraffin sections need antigen repair)
not yet tested in other applications.
optimal dilutions/concentrations should be determined by the end user.

Theoretical molecular weight 49kDa

Cellular localization The nucleus cytoplasmic Extracellular matrix

Form Liquid

Concentration 1mg/ml

immunogen KLH conjugated synthetic peptide derived from human Cytokeratin 15

Lsotype IgG1, Kappa

Purification affinity purified by Protein A

Buffer Solution Liquid in PBS containing 50% glycerol, 0.5% BSA and 2% sodium azide.

Storage Shipped at 4°C. Store at -20 °C for one year. Avoid repeated freeze/thaw cycles.

Attention This product as supplied is intended for research use only, not for use in human, therapeutic or diagnostic applications.



PubMed

[PubMed](#)

The protein encoded by this gene is a member of the keratin gene family. The keratins are intermediate filament proteins responsible for the structural integrity of epithelial cells and are subdivided into cytokeratins and hair keratins. Most of the type I cytokeratins consist of acidic proteins which are arranged in pairs of heterotypic keratin chains and are clustered in a region on chromosome 17q21.2. [provided by RefSeq].

SWISS:
P19012

Gene ID:
3866

Database links:

**Product
Detail**

[Entrez Gene: 3866](#) Human

[Entrez Gene: 16665](#) Mouse

[Entrez Gene: 287700](#) Rat

[Omim: 148030](#) Human

[SwissProt: P19012](#) Human

[SwissProt: Q61414](#) Mouse

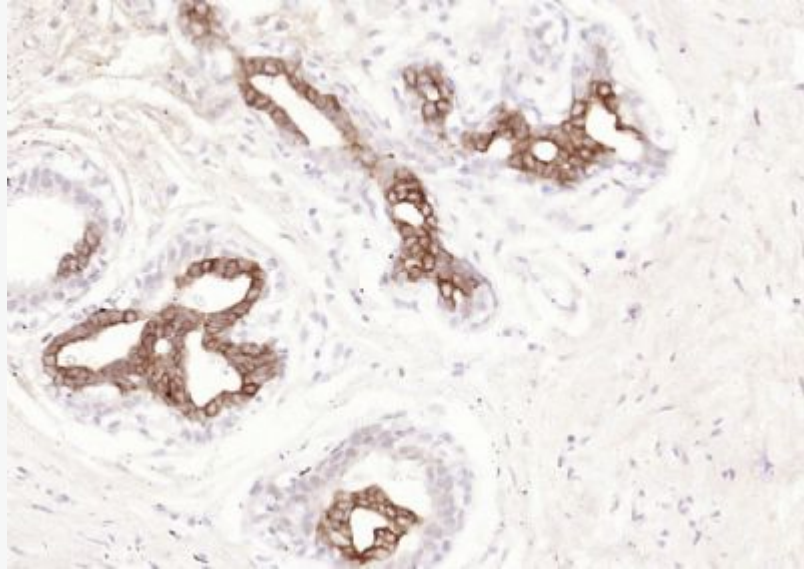
[SwissProt: Q61FV3](#) Rat

[Unigene: 654570](#) Human

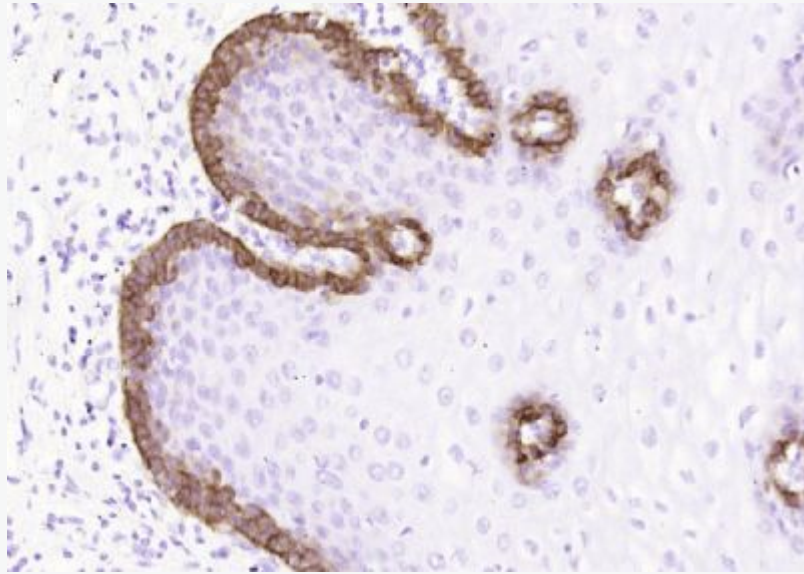
[Unigene: 440010](#) Mouse

[Unigene: 153568](#) Rat

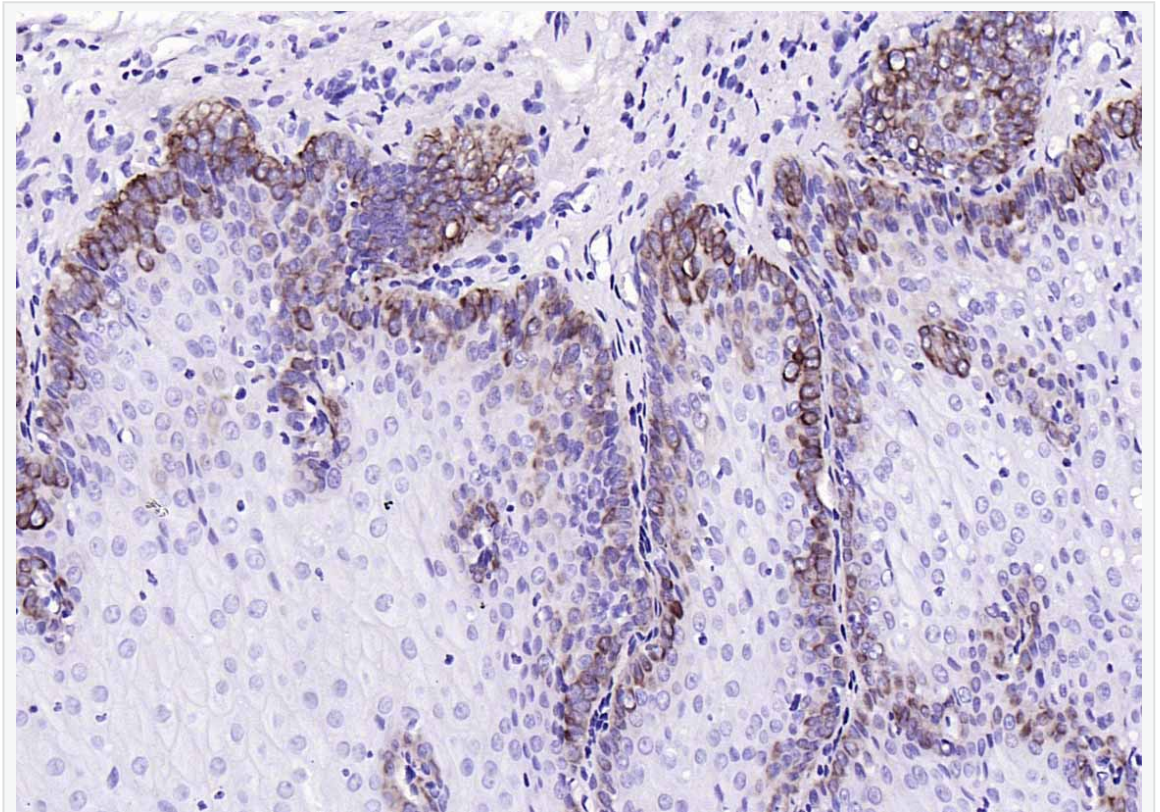
**Product
Picture**



Paraformaldehyde-fixed, paraffin embedded (human breast); Antigen retrieval by boiling in sodium citrate buffer (pH6.0) for 15min; Block endogenous peroxidase by 3% hydrogen peroxide for 20 minutes; Blocking buffer (normal goat serum) at 37°C for 30min; Antibody incubation with (Cytokeratin 15) Monoclonal Antibody, Unconjugated (SLM-34123M) at 1:200 overnight at 4°C, followed by operating according to SP Kit(Mouse)(sp-0024) instructions and DAB staining.



Paraformaldehyde-fixed, paraffin embedded (human esophagus); Antigen retrieval by boiling in sodium citrate buffer (pH6.0) for 15min; Block endogenous peroxidase by 3% hydrogen peroxide for 20 minutes; Blocking buffer (normal goat serum) at 37°C for 30min; Antibody incubation with (Cytokeratin 15) Monoclonal Antibody, Unconjugated (SLM-34123M) at 1:200 overnight at 4°C, followed by operating according to SP Kit(Mouse)(sp-0024) instructions and DAB staining.



Paraformaldehyde-fixed, paraffin embedded (human esophagus); Antigen retrieval by boiling in sodium citrate buffer (pH6.0) for 15min; Block endogenous peroxidase by 3% hydrogen peroxide for 20 minutes; Blocking buffer (normal goat serum) at 37°C for 30min; Antibody incubation with (Cytokeratin 15) Monoclonal Antibody, Unconjugated (SLM-34123M) at 1:200 overnight at 4°C, followed by operating according to SP Kit(Mouse)(sp-0024) instructions and DAB staining.