

Mouse Anti-Rabbit IgG (Fc specific ,Heavy Chain)antibody

SLM-33179M

Product Name	Rabbit IgG(Fc specific,Heavy Chain)
Chinese Name	兔 IgG Fc 单克隆抗体
Alias	Rabbit IgG Fc; IgG Heavy Chain; Mouse anti-Rabbit IgG Fc.
Research Area	Cell biology immunology
Immunogen Species	Mouse
Clonality	Monoclonal
Clone NO.	3F5
React Species	Rabbit
Applications	WB=1:500-1000 (Paraffin sections need antigen repair) not yet tested in other applications. optimal dilutions/concentrations should be determined by the end user.
Theoretical molecular weight	55kDa
Cellular localization	Secretory protein
Form	Liquid
Concentration	1mg/ml
immunogen	rabbit IgG
Lsotype	IgG
Purification	affinity purified by Protein G
Buffer Solution	1M TBS(pH7.4) with 1% BSA, 3% Proclin300 and 50% Glycerol.
Storage	Shipped at 4°C. Store at -20 °C for one year. Avoid repeated freeze/thaw cycles.
Attention	This product as supplied is intended for research use only, not for use in human, therapeutic or diagnostic applications.
PubMed	PubMed
Product Detail	IgG antibodies are large molecules of about 150 kDa made of four peptide chains. It contains two identical class γ heavy chains of about 50 kDa and two

identical light chains of about 25 kDa, thus a tetrameric quaternary structure. The two heavy chains are linked to each other and to a light chain each by disulfide bonds. The resulting tetramer has two identical halves, which together form the Y-like shape. Each end of the fork contains an identical antigen binding site. The Fc regions of IgGs bear a highly conserved N-glycosylation site. The N-glycans attached to this site are predominantly core-fucosylated diantennary structures of the complex type. In addition, small amounts of these N-glycans also bear bisecting GlcNAc and α -2,6-linked sialic acid residues.

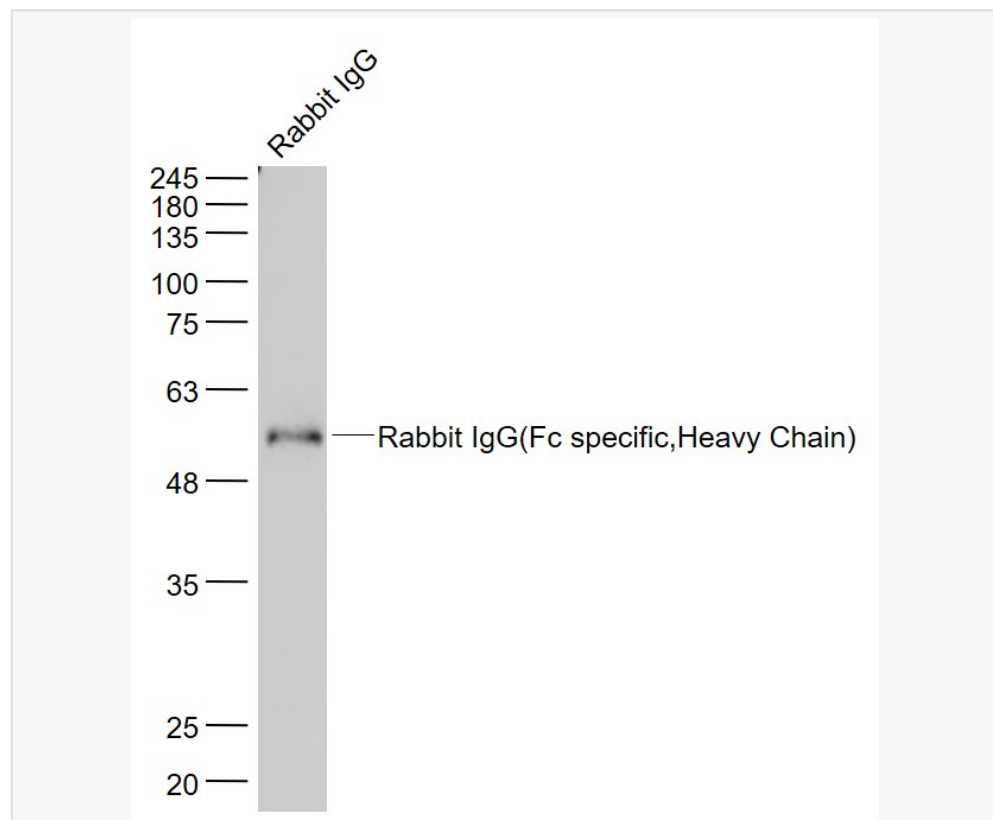
SWISS:

N/A

Gene ID:

N/A

Product Picture



Sample:

Rabbit IgG Lysate at 30 ug

Primary: Anti-Rabbit IgG(Fc specific,Heavy Chain) (SLM-33179M) at



1/1000 dilution

Secondary: IRDye800CW Goat Anti-Mouse IgG at 1/20000 dilution

Predicted band size: 55 kD

Observed band size: 55 kD