

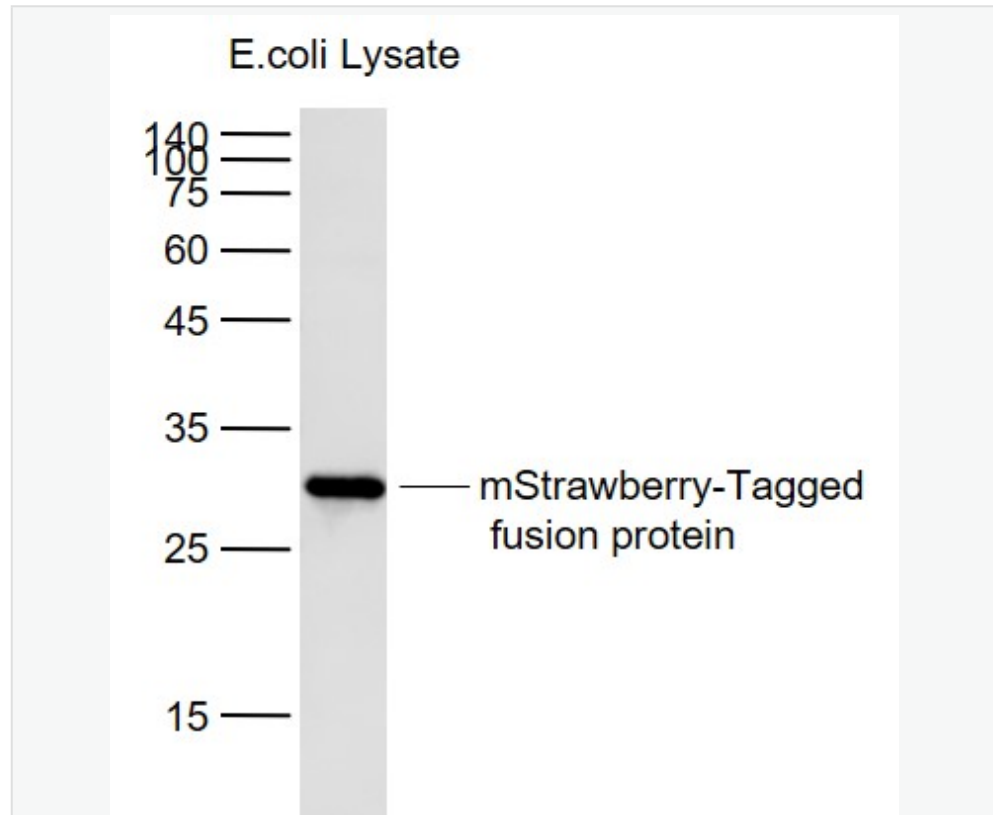


## Mouse Anti-mStrawberry antibody

SLM-33175M

<b>Product Name</b>	mStrawberry
<b>Chinese Name</b>	单体橙红色荧光蛋白单克隆抗体
<b>Alias</b>	monomeric red-orange fluorescent protein;
<b>Product Type</b>	Tag anti
<b>Immunogen Species</b>	Mouse
<b>Clonality</b>	Monoclonal
<b>Clone NO.</b>	6C8
<b>React Species</b>	Species independent WB=1:1000-5000,ELISA=1:1000-5000
<b>Applications</b>	not yet tested in other applications. optimal dilutions/concentrations should be determined by the end user.
<b>Form</b>	Liquid
<b>Concentration</b>	1mg/ml
<b>immunogen</b>	Recombinant Protein mStrawberry
<b>Lsotype</b>	IgG
<b>Purification</b>	affinity purified by Protein G
<b>Buffer Solution</b>	1M TBS(pH7.4) with 1% BSA, 3% Proclin300 and 50% Glycerol.
<b>Storage</b>	Shipped at 4°C. Store at -20 °C for one year. Avoid repeated freeze/thaw cycles.
<b>Attention</b>	This product as supplied is intended for research use only, not for use in human, therapeutic or diagnostic applications.
<b>PubMed</b>	<a href="#">PubMed</a>
<b>Product Detail</b>	

**Product Picture**



Sample:

Lane 1: mStrawberry-Tagged fusion protein (full length) Overexpression

E.coli Lysate (Cat#: SL33175P) at 4 ug

Primary: Anti-mStrawberry-Tag (SLM-33175M) at 1/1000 dilution

Secondary: IRDye800CW Goat Anti-Mouse IgG at 1/20000 dilution

Predicted band size: 26 kD

Observed band size: 26 kD