

## Mouse Anti-Flotillin-1 antibody

SLM-33168M

<b>Product Name</b>	Flotillin-1
<b>Chinese Name</b>	脂筏结构蛋白 1 单克隆抗体
<b>Alias</b>	FLOT 1; FLOT1; FLOT1_HUMAN; Flotillin-1; Flotillin1; Integral membrane component of caveolae; Reggie 2.
<b>Research Area</b>	Cell biology immunology Signal transduction
<b>Immunogen Species</b>	Mouse
<b>Clonality</b>	Monoclonal
<b>Clone NO.</b>	8D12
<b>React Species</b>	Mouse, (predicted: Human, Rat, ) WB=1:500-1000
<b>Applications</b>	not yet tested in other applications. optimal dilutions/concentrations should be determined by the end user.
<b>Theoretical molecular weight</b>	47kDa
<b>Cellular localization</b>	The cell membrane
<b>Form</b>	Liquid
<b>Concentration</b>	1mg/ml
<b>immunogen</b>	KLH conjugated synthetic peptide derived from human Flotillin-1
<b>Lsotype</b>	IgG
<b>Purification</b>	affinity purified by Protein G
<b>Buffer Solution</b>	1M TBS(pH7.4) with 1% BSA, 3% Proclin300 and 50% Glycerol.
<b>Storage</b>	Shipped at 4°C. Store at -20 °C for one year. Avoid repeated freeze/thaw cycles.
<b>Attention</b>	This product as supplied is intended for research use only, not for use in human, therapeutic or diagnostic applications.
<b>PubMed</b>	<a href="#">PubMed</a>
<b>Product Detail</b>	May act as a scaffolding protein within caveolar membranes, functionally participating in formation of caveolae or caveolae-like vesicles.

**Function:**

May act as a scaffolding protein within caveolar membranes, functionally participating in formation of caveolae or caveolae-like vesicles.

**Subunit:**

Heterooligomeric complex of flotillin-1 and flotillin-2 and caveolin-1 and caveolin-2 (By similarity). Interacts with ECM29.

**Subcellular Location:**

Cell membrane; Peripheral membrane protein. Membrane, caveola; Peripheral membrane protein. Melanosome. Endosome.

**Similarity:**

Belongs to the band 7/mec-2 family. Flotillin subfamily.

**SWISS:**

O75955

**Gene ID:**

10211

**Database links:**

[Entrez Gene: 10211](#) Human

[Entrez Gene: 14251](#) Mouse

[Entrez Gene: 64665](#) Rat

[Omim: 606998](#) Human

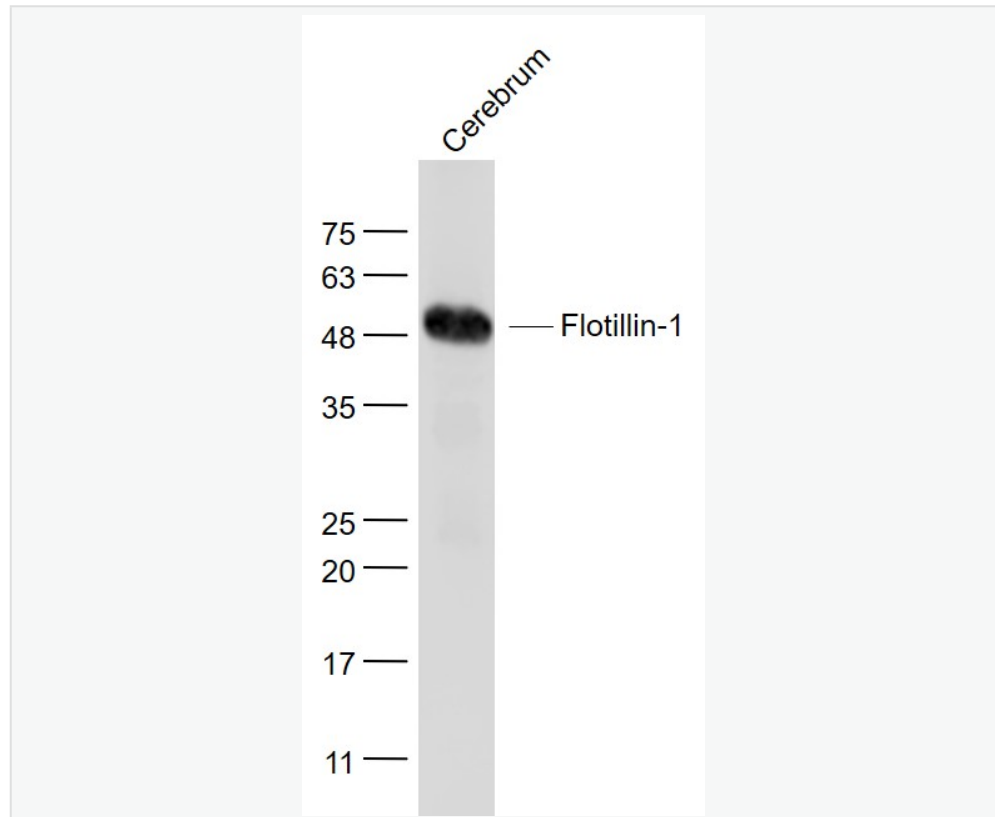
[SwissProt: O75955](#) Human

[SwissProt: O08917](#) Mouse

[SwissProt: Q9Z1E1](#) Rat

[Unigene: 179986](#) Human

**Product Picture**



Sample:

Cerebrum (Mouse) Lysate at 40 ug

Primary: Anti- Flotillin-1 (SLM-33168M) at 1/1000 dilution

Secondary: IRDye800CW Goat Anti-Mouse IgG at 1/20000 dilution

Predicted band size: 47 kD

Observed band size: 49 kD