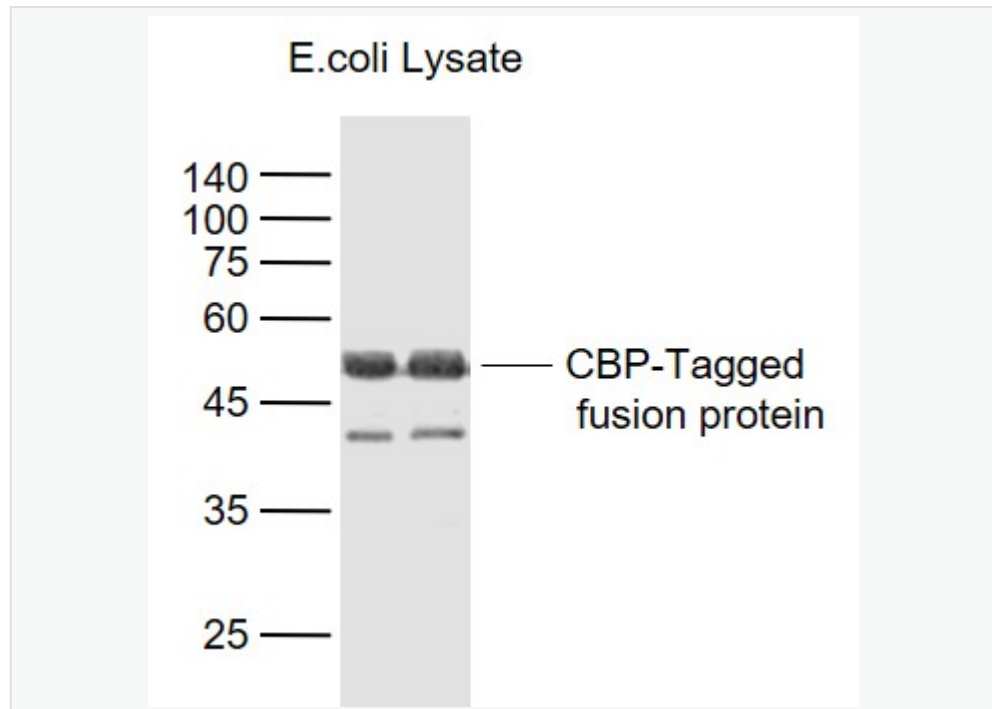


Mouse Anti-CBP Tag antibody

SLM-33132M

Product Name	CBP Tag
Chinese Name	CBP Tag 标签单克隆抗体
Alias	CBP-tag; calmodulin-binding peptide;
Product Type	Tag anti
Immunogen Species	Mouse
Clonality	Monoclonal
Clone NO.	4G9
React Species	Species independent WB=1:1000-5000,ELISA=1:1000-5000
Applications	not yet tested in other applications. optimal dilutions/concentrations should be determined by the end user.
Form	Liquid
Concentration	1mg/ml
immunogen	KLH conjugated synthetic peptide CBP Tag
Lsotype	IgG
Purification	affinity purified by Protein G
Buffer Solution	1M TBS(pH7.4) with 1% BSA, 3% Proclin300 and 50% Glycerol.
Storage	Shipped at 4°C. Store at -20 °C for one year. Avoid repeated freeze/thaw cycles.
Attention	This product as supplied is intended for research use only, not for use in human, therapeutic or diagnostic applications.
PubMed	PubMed CBP tag is a calmodulin-binding peptide, KRRWKKNFIAVSAANRFKKISSSGAL, derived from skeletal/cardiac muscle myosin light chain kinase 2.
Product Detail	SWISS: N/A Gene ID:

N/A



Product Picture

Sample:

Lane 1: CBP-Tagged Fusion Protein Overexpression E.coli Lysate (Cat#: SL41403P) at 2ug

Lane 2: CBP-Tagged Fusion Protein Overexpression E.coli Lysate (Cat#: SL41403P) at 4ug

Primary: Anti-CBP Tag (SLM-33132M) at 1/1000 dilution

Secondary: IRDye800CW Goat Anti-Mouse IgG at 1/20000 dilution

Predicted band size: 51 kD

Observed band size: 51 kD