

## Mouse Anti-mCherry antibody

SLM-33131M

<b>Product Name</b>	mCherry
<b>Chinese Name</b>	单体樱桃红荧光蛋白单克隆抗体
<b>Alias</b>	mCherry; monomeric cherry red fluorescent protein.
<b>Product Type</b>	Tag anti
<b>Immunogen Species</b>	Mouse
<b>Clonality</b>	Monoclonal
<b>Clone NO.</b>	9F11
<b>React Species</b>	Species independent WB=1:1000-5000,ELISA=1:1000-5000
<b>Applications</b>	not yet tested in other applications. optimal dilutions/concentrations should be determined by the end user.
<b>Form</b>	Liquid
<b>Concentration</b>	1mg/ml
<b>immunogen</b>	Recombinant Protein mCherry
<b>Lsotype</b>	IgG1
<b>Purification</b>	affinity purified by Protein G
<b>Buffer Solution</b>	1M TBS(pH7.4) with 1% BSA, 3% Proclin300 and 50% Glycerol.
<b>Storage</b>	Shipped at 4°C. Store at -20 °C for one year. Avoid repeated freeze/thaw cycles.
<b>Attention</b>	This product as supplied is intended for research use only, not for use in human, therapeutic or diagnostic applications.
<b>PubMed</b>	<a href="#">PubMed</a>
<b>Product Detail</b>	mCherry is a fluorophore (a fluorescent molecule) used in biotechnology as a tracer to follow the flow of fluids, as a marker when tagged to molecules and cells components. mCherry is a monomeric fluorescent construct with peak absorption/emission at 587 nm and 610 nm, respectively. It is resistant to photobleaching and is stable. mCherry is sometimes preferred to other fluorophores due to its colour, as well as its photostability compared to other monomeric fluorophores.

**SWISS:**

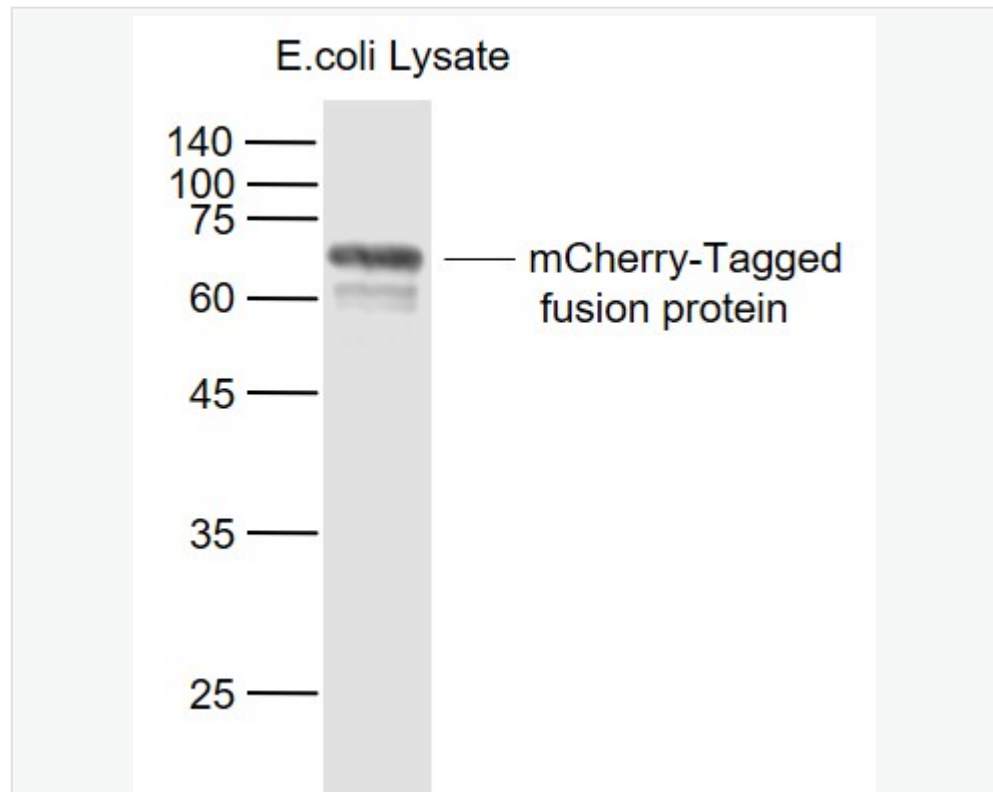
N/A

**Gene ID:**

N/A

**Database links:**

**Product Picture**



**Sample:**

Lane 1: mCherry-tagged fusion protein Overexpression E.coli Lysate  
(Cat#: SL33131P) at 4 ug

Primary: Anti- mCherry-Tag (SLM-33131M) at 1/1000 dilution

Secondary: IRDye800CW Goat Anti-Mouse IgG at 1/20000 dilution

Predicted band size: 70 kD



SunLong Biotech Co.,LTD  
Tel: 0086-571-56623320 Fax:0086-571-56623318  
E-mail:sales@sunlongbiotech.com  
www.sunlongbiotech.com

Observed band size: 70 kD