

Mouse Anti-HSV-Tag antibody

SLM-33119M

| | |
|--------------------------|---|
| Product Name | HSV-Tag |
| Chinese Name | HSV tag 标签单克隆抗体 |
| Alias | HSV epitope tag; QPELAPEDPED tag; Envelope glycoprotein D (Human herpesvirus 1); Envelope glycoprotein D; US6 (Human herpesvirus 1); gD. |
| Product Type | Tag anti |
| Immunogen Species | Mouse |
| Clonality | Monoclonal |
| Clone NO. | 7B2 |
| React Species | Species independent WB=1:1000-5000,ELISA=1:1000-5000 |
| Applications | not yet tested in other applications. optimal dilutions/concentrations should be determined by the end user. |
| Form | Liquid |
| Concentration | 1mg/ml |
| immunogen | KLH conjugated synthetic peptide HSV-Tag |
| Lsotype | IgG1 |
| Purification | affinity purified by Protein G |
| Buffer Solution | 1M TBS(pH7.4) with 1% BSA, 3% Proclin300 and 50% Glycerol. |
| Storage | Shipped at 4°C. Store at -20 °C for one year. Avoid repeated freeze/thaw cycles. |
| Attention | This product as supplied is intended for research use only, not for use in human, therapeutic or diagnostic applications. |
| PubMed | PubMed |
| Product Detail | The HSV (herpes simplex virus) epitope tag is frequently engineered onto the N- or C- terminus of a protein of interest so that the tagged protein can be analyzed and visualized using immunochemical methods. The recognized HSV peptide epitope represents the amino acid sequence QPELAPEDPED. HSV Tag antibody can recognize C-terminal, internal, and N-terminal HSV-tagged proteins. |

SWISS:

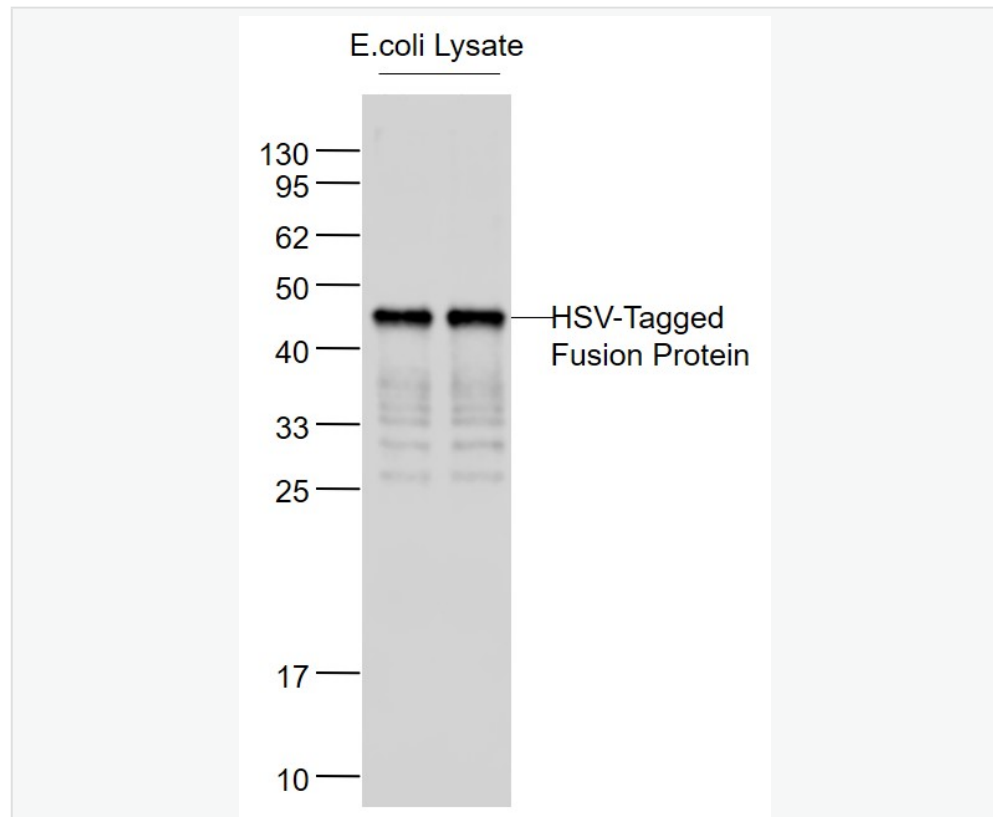
N/A

Gene ID:

N/A

Database links:

Product Picture



Sample:

Lane1: HSV-Tagged Fusion Protein Overexpression E.coli Lysate at 2ug

Lane2: HSV-Tagged Fusion Protein Overexpression E.coli Lysate at 2ug

Primary: Anti-HSV tag (SLM-33119M) at 1/1000 dilution

Secondary: IRDye800CW Goat Anti-Mouse IgG at 1/20000 dilution

Predicted band size: 41 kD



SunLong Biotech Co.,LTD
Tel: 0086-571-56623320 Fax:0086-571-56623318
E-mail:sales@sunlongbiotech.com
www.sunlongbiotech.com

Observed band size: 45 kD