

## Mouse Anti-CD41/ITGA2B antibody

SLM-33112M

<b>Product Name</b>	CD41/ITGA2B
<b>Chinese Name</b>	血小板膜 glycoproteinIIb (CD41) 单克隆抗体
<b>Alias</b>	platelet glycoprotein IIb of IIb/IIIa complex; Integrin, alpha 2b (platelet glycoprotein IIb of IIb/IIIa complex, antigen CD41); GPIIb; GTA; HPA3; CD 41; CD41 antigen; CD41a; CD41b; GP2b; GPalpha IIb; GPalphaIIb; Integrin alpha IIb; Integrin alpha IIb precursor; ITGA 2B; Integrin alpha 2b; ITGAB; Platelet fibrinogen receptor alpha; Platelet fibrinogen receptor alpha subunit; Platelet glycoprotein IIb of IIb/IIIa complex; Platelet membrane glycoprotein IIb; Platelet specific antigen bak; ITA2B_HUMAN.
<b>Research Area</b>	Tumour Cell biology immunology Signal transduction Cell adhesion molecule
<b>Immunogen Species</b>	Mouse
<b>Clonality</b>	Monoclonal
<b>Clone NO.</b>	9B10
<b>React Species</b>	Human
<b>Applications</b>	WB=1:500-2000,Flow-Cyt=1ug/Test not yet tested in other applications. optimal dilutions/concentrations should be determined by the end user.
<b>Theoretical molecular weight</b>	125kDa
<b>Cellular localization</b>	The cell membrane
<b>Form</b>	Liquid
<b>Concentration immunogen</b>	1mg/ml KLH conjugated synthetic peptide derived from human ITGA2B
<b>Lsotype</b>	IgG
<b>Purification</b>	affinity purified by Protein G
<b>Buffer Solution</b>	1M PBS(pH7.4) with 0.1%Proclin300
<b>Storage</b>	Shipped at 4°C. Store at -20 °C for one year. Avoid repeated freeze/thaw cycles.
<b>Attention</b>	This product as supplied is intended for research use only, not for use in

human, therapeutic or diagnostic applications.

## PubMed

### [PubMed](#)

This gene encodes a member of the integrin alpha chain family of proteins. The encoded preprotein is proteolytically processed to generate light and heavy chains that associate through disulfide linkages to form a subunit of the alpha-IIb/beta-3 integrin cell adhesion receptor. This receptor plays a crucial role in the blood coagulation system, by mediating platelet aggregation. Mutations in this gene are associated with platelet-type bleeding disorders, which are characterized by a failure of platelet aggregation, including Glanzmann thrombasthenia. [provided by RefSeq, Jan 2016]

### **Function:**

Isoform 1 and isoform 2 were identified in platelets and megakaryocytes, but not in reticulocytes or in Jurkat and U937 white blood cell line. Isoform 3 is expressed by leukemia, prostate adenocarcinoma and melanoma cells but not by platelets or normal prostate or breast epithelial cells.

### **Subcellular Location:**

Membrane.

### **DISEASE:**

Defects in ITGA2B are a cause of Glanzmann thrombasthenia (GT) [MIM:273800]; also known as thrombasthenia of Glanzmann and Naegeli. GT is the most common inherited disease of platelets. It is an autosomal recessive disorder characterized by mucocutaneous bleeding of mild-to-moderate severity and the inability of this integrin to recognize macromolecular or synthetic peptide ligands. GT has been classified clinically into types I and II. In type I, platelets show absence of the glycoprotein IIb/beta-3 complexes at their surface and lack fibrinogen and clot retraction capability. In type II, the platelets express the glycoprotein IIb/beta-3 complex at reduced levels (5-20% controls), have detectable amounts of fibrinogen, and have low or moderate clot retraction capability. The platelets of GT 'variants' have normal or near normal (60-100%) expression of dysfunctional receptors.

## Product Detail

### **Similarity:**

Belongs to the integrin alpha chain family.  
Contains 7 FG-GAP repeats.

### **SWISS:**

P08514

### **Gene ID:**

3674

**Database links:**

[Entrez Gene: 3674](#) Human

[Entrez Gene: 16399](#) Mouse

[Entrez Gene: 685269](#) Rat

[Omim: 607759](#) Human

[SwissProt: P08514](#) Human

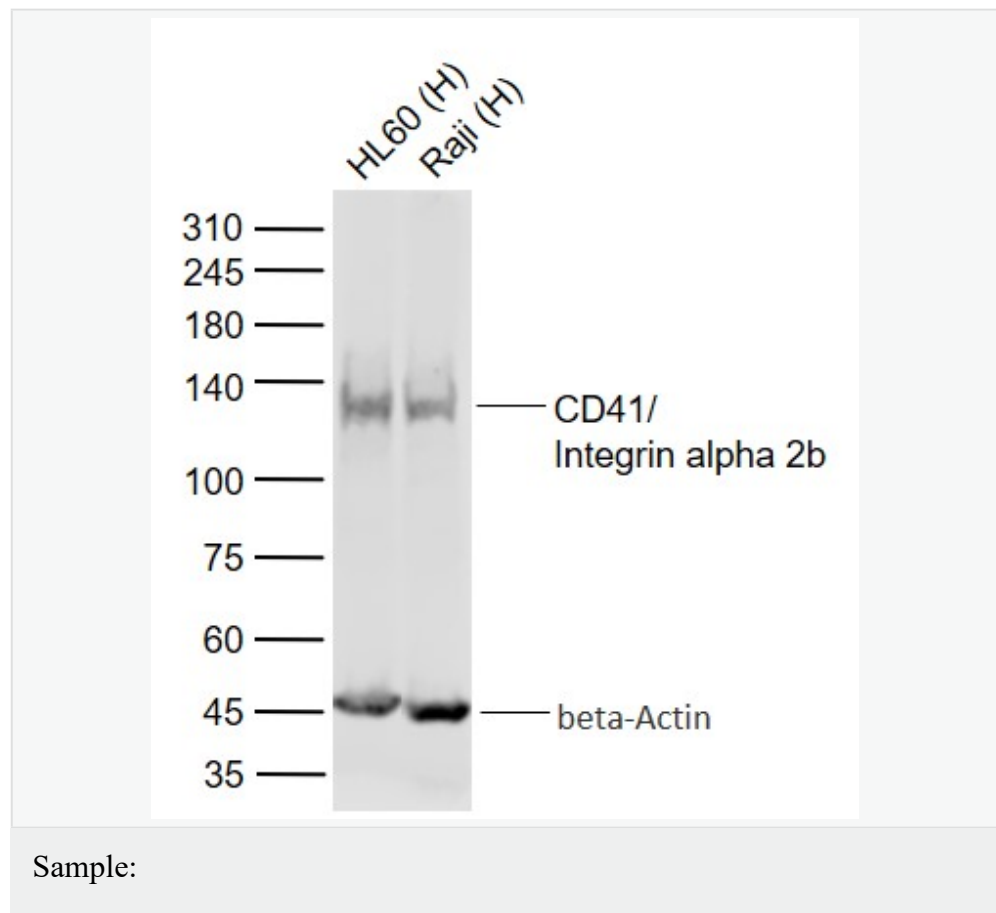
[SwissProt: Q9QUM0](#) Mouse

[Unigene: 411312](#) Human

[Unigene: 26646](#) Mouse

[Unigene: 128177](#) Rat

**Product Picture**



Lane 1: HL60 (Human) Cell Lysate at 30 ug

Lane 2: Raji (Human) Cell Lysate at 30 ug

Primary:

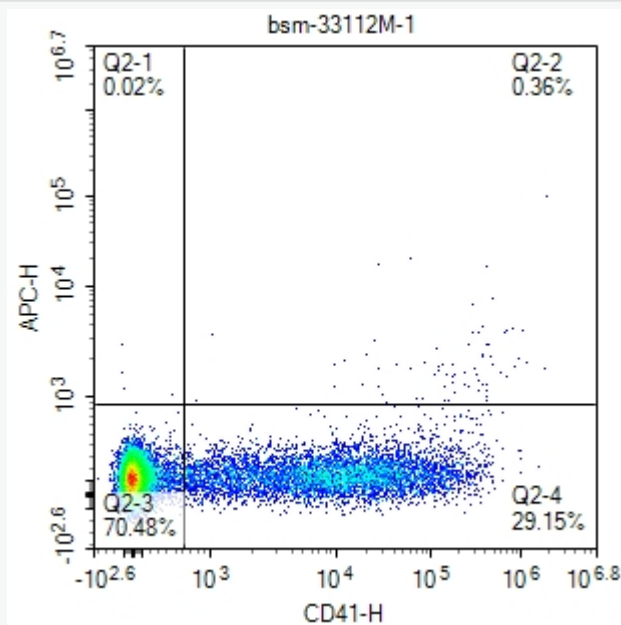
Anti-CD41/Integrin alpha 2b (SLM-33112M) at 1/1000 dilution

Anti-beta-Actin (SL0061R) at 1/2000 dilution

Secondary: IRDye800CW Goat Anti-Mouse IgG at 1/20000 dilution

Predicted band size: 125 kD

Observed band size: 125 kD



scatter diagram showing peripheral blood lymphocytes stained with SLM-33112M. The cells were incubated with the antibody (SLM-33112M, 1ug/Test) for 30 min at 22°C. Acquisition of >10,000



SunLong Biotech Co.,LTD  
Tel: 0086-571-56623320 Fax:0086-571-56623318  
E-mail:sales@sunlongbiotech.com  
www.sunlongbiotech.com

events was performed.