

Mouse Anti-CK18 antibody

SLM-33102M

Product Name CK18

Chinese Name 细胞角蛋白 18 单克隆抗体

Alias K1C18_HUMAN; Keratin, type I cytoskeletal 18; KRT18; CYK18; Cell proliferation-inducing gene 46 protein; Cytokeratin-18 (CK-18); Keratin-18 (K18); PIG46; Keratin 18;

Research Area Tumour Cell biology immunology Signal transduction

Immunogen Species Mouse

Clonality Monoclonal

Clone NO. 4H7

React Species Human, (predicted: Mouse,)
WB=1:500-1000,ICC/IF=1:100-500

Applications not yet tested in other applications.
optimal dilutions/concentrations should be determined by the end user.

Theoretical molecular weight 48kDa

Cellular localization cytoplasmic The cell membrane

Form Liquid

Concentration 1mg/ml

immunogen KLH conjugated synthetic peptide derived from human CK18

Lsotype IgG

Purification affinity purified by Protein G

Buffer Solution 1M TBS(pH7.4) with 1% BSA, 3% Proclin300 and 50% Glycerol.

Storage Shipped at 4°C. Store at -20 °C for one year. Avoid repeated freeze/thaw cycles.

Attention This product as supplied is intended for research use only, not for use in human, therapeutic or diagnostic applications.

PubMed [PubMed](#)

KRT18 encodes the type I intermediate filament chain keratin 18. Keratin 18, together with its filament partner keratin 8, are perhaps the most commonly found members of the intermediate filament gene family. They are expressed in single layer epithelial tissues of the body. Mutations in this gene have been linked to cryptogenic cirrhosis. Two transcript variants encoding the same protein have been found for this gene. [provided by RefSeq, Jul 2008]

Function:

When phosphorylated, plays a role in filament reorganization. Involved in the delivery of mutated CFTR to the plasma membrane. Involved in the uptake of thrombin-antithrombin complexes by hepatic cells (By similarity). Together with KRT8, is involved in interleukin-6 (IL-6)-mediated barrier protection.

Post-translational modifications:

Phosphorylation increases by IL-6.

Proteolytically cleaved by caspases during epithelial cell apoptosis. Cleavage occurs at Asp-231 by either caspase-3, caspas-6 or caspase-7.

O-glycosylated at multiple sites; glycans consist of single N-acetylglucosamine residue.

Similarity:

Belongs to the intermediate filament family.

**Product
Detail**

SWISS:
P05783

Gene ID:
3875

Database links:

[Entrez Gene: 506480](#) Cow

[Entrez Gene: 3875](#) Human

[Entrez Gene: 16668](#) Mouse

[Entrez Gene: 294853](#) Rat

[SwissProt: P05783](#) Human

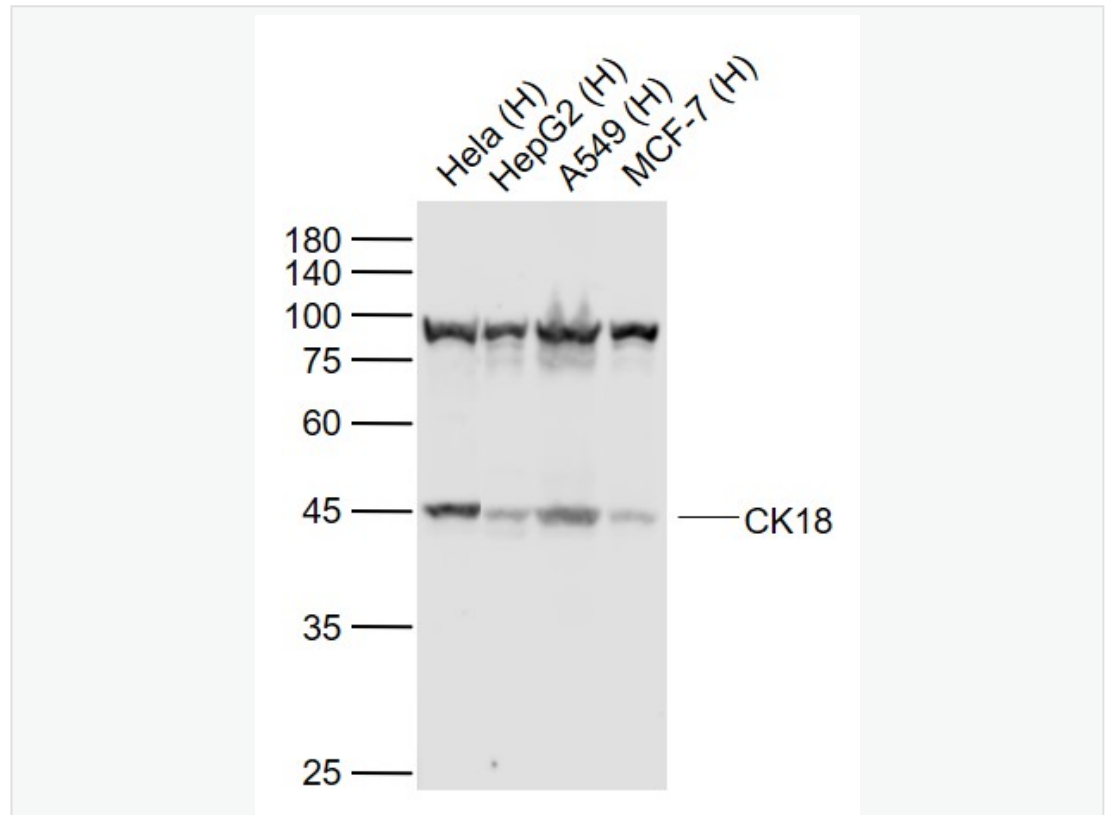
[SwissProt: P05784](#) Mouse

[SwissProt: Q5BJY9](#) Rat

结构蛋白 (Structural Proteins)

常用于 Tumour 细胞的分化、增殖及转移方面的研究。

**Product
Picture**



Sample:

Lane 1: HeLa (Human) cell Lysate at 30 ug

Lane 2: HepG2 (Human) cell Lysate at 30 ug

Lane 3: A549 (Human) cell Lysate at 30 ug

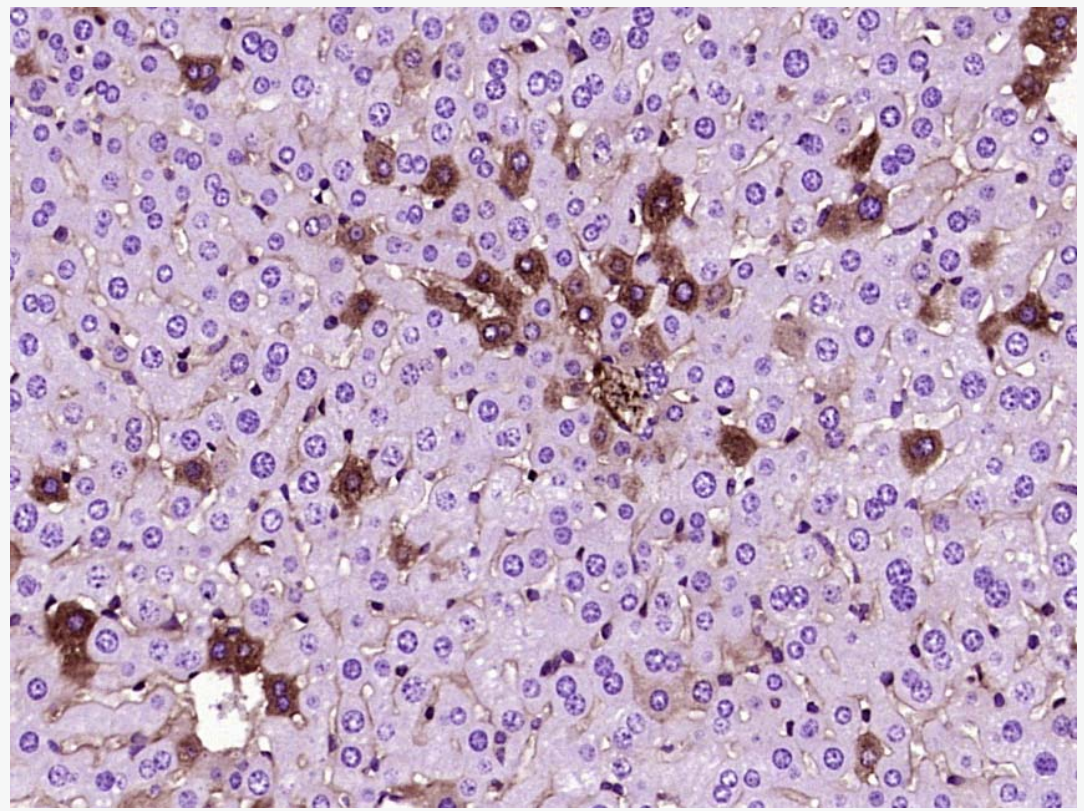
Lane 4: MCF-7 (Human) cell Lysate at 30 ug

Primary: Anti-CK18 (SLM-33102M) at 1/1000 dilution

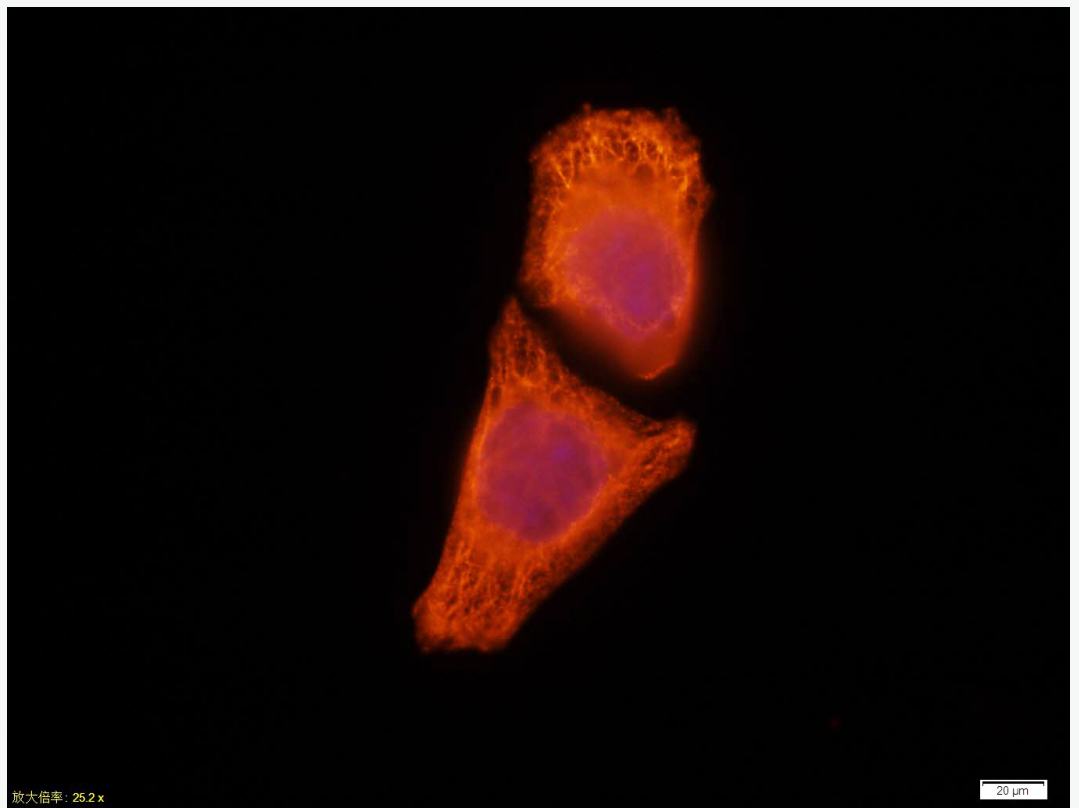
Secondary: IRDye800CW Goat Anti-Mouse IgG at 1/20000 dilution

Predicted band size: 48 kD

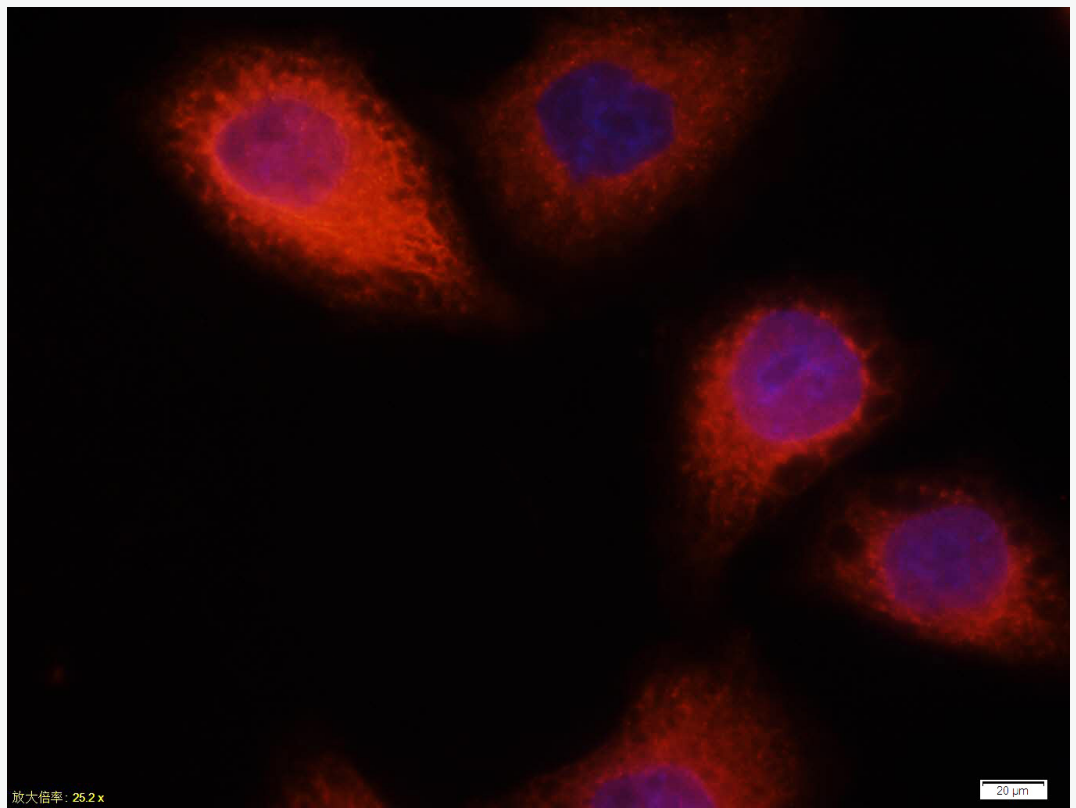
Observed band size: 45 kD



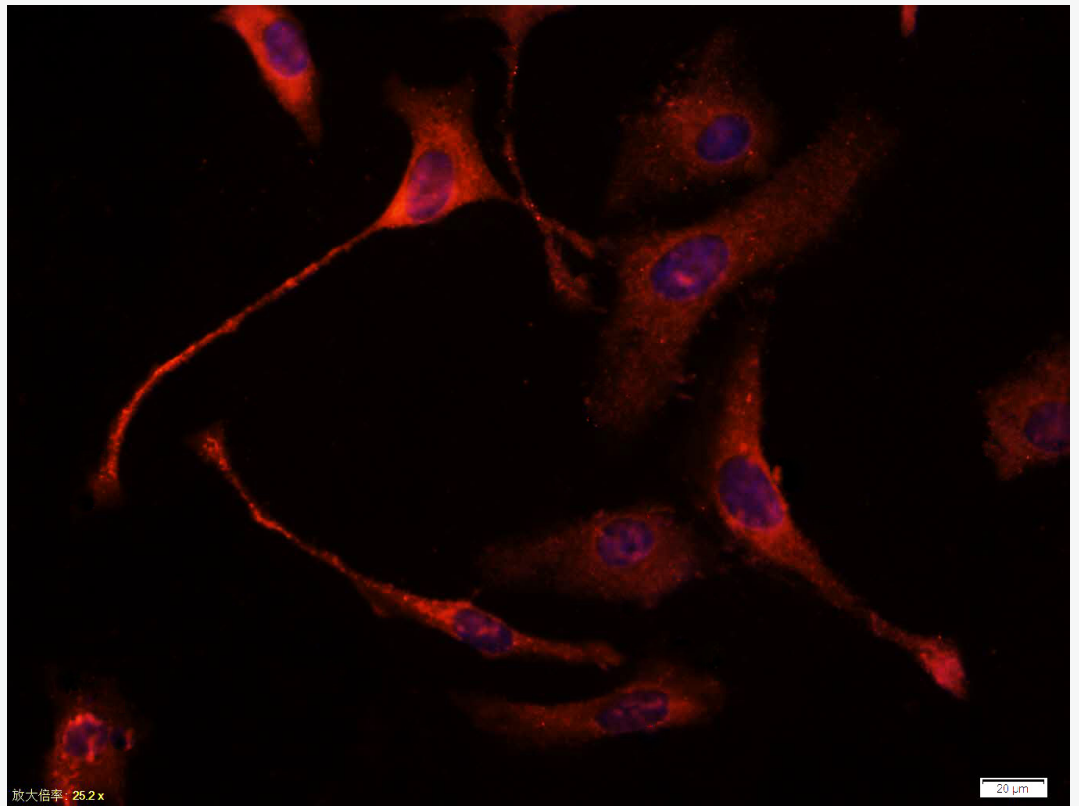
Paraformaldehyde-fixed, paraffin embedded (Mouse liver); Antigen retrieval by boiling in sodium citrate buffer (pH6.0) for 15min; Block endogenous peroxidase by 3% hydrogen peroxide for 20 minutes; Blocking buffer (normal goat serum) at 37°C for 30min; Antibody incubation with (CK18) Monoclonal Antibody, Unconjugated (ascites of SLM-33102M 4H7) at 1:2000 overnight at 4°C, followed by a conjugated secondary (sp-0024) for 20 minutes and DAB staining.



Tissue/cell:HeLa cell; 4% Paraformaldehyde-fixed; Triton X-100 at room temperature for 20 min; Blocking buffer (normal goat serum, C-0005) at 37°C for 20 min; Antibody incubation with (CK18) monoclonal Antibody, Unconjugated (SLM-33102M) 1:100, 90 minutes at 37°C; followed by a CY3 conjugated Goat Anti-Mouse IgG antibody at 37°C for 90 minutes, DAPI (blue, C02-04002) was used to stain the cell nuclei.



Tissue/cell:HeLa cell; 4% Paraformaldehyde-fixed; Triton X-100 at room temperature for 20 min; Blocking buffer (normal goat serum, C-0005) at 37°C for 20 min; Antibody incubation with (CK18) monoclonal Antibody, Unconjugated (SLM-33102M) 1:100, 90 minutes at 37°C; followed by a CY3 conjugated Goat Anti-Mouse IgG antibody at 37°C for 90 minutes, DAPI (blue, C02-04002) was used to stain the cell nuclei.



Tissue/cell:HeLa cell; 4% Paraformaldehyde-fixed; Triton X-100 at room temperature for 20 min; Blocking buffer (normal goat serum, C-0005) at 37°C for 20 min; Antibody incubation with (CK18) monoclonal Antibody, Unconjugated (SLM-33102M) 1:100, 90 minutes at 37°C; followed by a CY3 conjugated Goat Anti-Mouse IgG antibody at 37°C for 90 minutes, DAPI (blue, C02-04002) was used to stain the cell nuclei.