

## Mouse Anti-human CD28 antibody

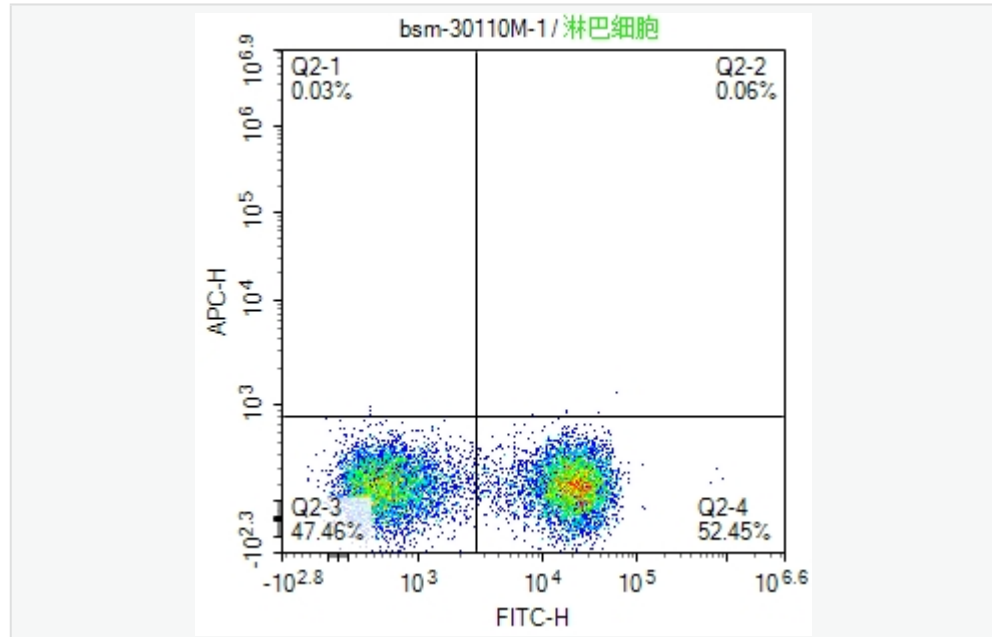
SLM-30110M

<b>Product Name</b>	human CD28
<b>Chinese Name</b>	人 CD28 单克隆抗体
<b>Alias</b>	CD 28; CD28 antigen; CD28 molecule; MGC138290; T cell antigen CD28; T cell specific surface glycoprotein; T cell specific surface glycoprotein CD28; Tp44; CD28_HUMAN.
<b>Immunogen Species</b>	Mouse
<b>Clonality</b>	Monoclonal
<b>Clone NO.</b>	8C3
<b>React Species</b>	Human, Flow-Cyt=1ul/Test
<b>Applications</b>	not yet tested in other applications. optimal dilutions/concentrations should be determined by the end user.
<b>Theoretical molecular weight</b>	25kDa
<b>Detection molecular weight</b>	45
<b>Form</b>	Liquid
<b>Lsotype</b>	Mouse IgG1, k
<b>Purification</b>	Affinity purified by Protein G
<b>Buffer Solution</b>	1M TBS(pH=7.4)
<b>Storage</b>	Shipped at 4°C. Store at -20°C for one year. Avoid repeated freeze/thaw cycles.
<b>Attention</b>	This product as supplied is intended for research use only, not for use in human, therapeutic or diagnostic applications.
<b>PubMed</b>	<a href="#">PubMed</a>
<b>Product Detail</b>	The protein encoded by this gene is essential for T-cell proliferation and survival, cytokine production, and T-helper type-2 development. Several alternatively spliced transcript variants encoding different isoforms have been found for this gene.[provided by RefSeq, Jul 2011]
	SWISS:

P10747

Gene ID:  
940

**Product Picture**



scatter diagram showing peripheral blood lymphocytes stained with SLM-30110M. The cells were incubated with the antibody (SLM-30110M, 1 $\mu$ l/Test) for 30 min at 22°C. The secondary antibody used for 40 min at room temperature Acquisition of >10,000 events was performed.