

Mouse Anti-human CD25 antibody

SLM-30025M

Product Name	human CD25
Chinese Name	小鼠抗人 CD25 单克隆抗体
Alias	Interleukin 2 receptor alpha chain; CD 25; CD25; CD25 antigen; IDDM10; IL 2 RA; IL 2 receptor alpha subunit; IL2 RA; IL-2RA; IL2R; IL2RA; IL2RAC; Interleukin 2 Receptor Alpha; Interleukin 2 receptor alpha chain; Interleukin 2 receptor; Ly43; p55; T Cell Growth Factor Receptor; TAC Antigen; TCGFR; IL2RA_HUMAN.
Immunogen Species	Mouse
Clonality	Monoclonal
Clone NO.	5E9
React Species	Human, Flow-Cyt=1ug/Test
Applications	not yet tested in other applications. optimal dilutions/concentrations should be determined by the end user.
Theoretical molecular weight	28kDa
Detection molecular weight	55
Cellular localization	The cell membrane
Form	Liquid
Concentration	1mg/ml
immunogen	KLH conjugated synthetic peptide derived from human CD25
Lsotype	Mouse IgG2a, k
Purification	Affinity purified by Protein G
Buffer Solution	1M TBS(pH=7.4)
Storage	Shipped at 4°C. Store at -20°C for one year. Avoid repeated freeze/thaw cycles.
Attention	This product as supplied is intended for research use only, not for use in human, therapeutic or diagnostic applications.

PubMed

[PubMed](#)

The interleukin 2 (IL2) receptor alpha (IL2RA) and beta (IL2RB) chains, together with the common gamma chain (IL2RG), constitute the high-affinity IL2 receptor. Homodimeric alpha chains (IL2RA) result in low-affinity receptor, while homodimeric beta (IL2RB) chains produce a medium-affinity receptor. Normally an integral-membrane protein, soluble IL2RA has been isolated and determined to result from extracellular proteolysis.

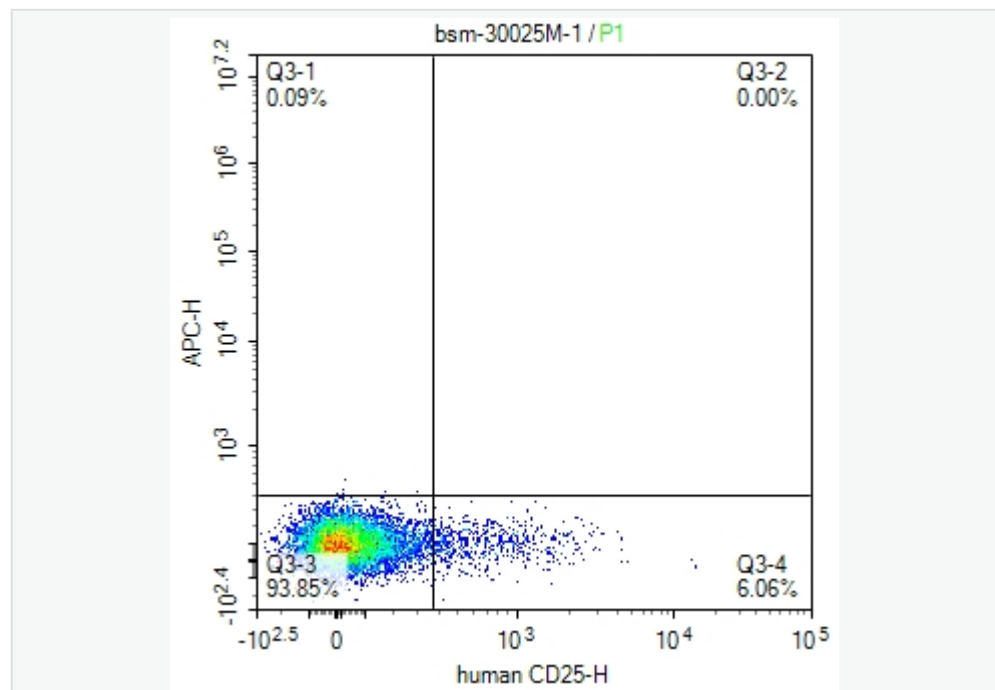
Alternately-spliced IL2RA mRNAs have been isolated, but the significance of each is presently unknown. Mutations in this gene are associated with interleukin 2 receptor alpha deficiency. Patients with severe Coronavirus Disease 2019 (COVID-19), the disease caused by the novel severe acute respiratory syndrome coronavirus 2 (SARS-CoV-2), have significantly elevated levels of IL2R in their plasma. Similarly, serum IL-2R levels are found to be elevated in patients with different types of carcinomas. Certain IL2RA and IL2RB gene polymorphisms have been associated with lung cancer risk. [provided by RefSeq, Jul 2020]

Product Detail

SWISS:
P01589

Gene ID:
3559

Product Picture



scatter diagram showing human peripheral blood lymphocytes stained



with SLM-30025M. The cells were incubated with the antibody (SLM-30025M, 1ug/Test) for 30 min at room temperature. The secondary antibody used for 40 min at room temperature. Acquisition of >10,000 events was performed.