

Mouse Anti-human CD11a antibody

SLM-30013M

Product Name	human CD11a
Chinese Name	人 CD11a 单克隆抗体
Alias	Integrin alpha L; Integrin alpha-L; Leukocyte adhesion glycoprotein LFA-1 alpha chain; LFA-1A; Leukocyte function-associated molecule 1 alpha chain; Lymphocyte antigen 15; Ly-15; CD11 antigen-like family member A; CD_antigen; ITAL_HUMAN.
Immunogen Species	Mouse
Clonality	Monoclonal
Clone NO.	11aF1
React Species	Human
Applications	ICC/IF=1:100-500,Flow-Cyt=1ug/Test not yet tested in other applications. optimal dilutions/concentrations should be determined by the end user.
Theoretical molecular weight	126kDa
Detection molecular weight	180
Form	Liquid
Lsotype	Mouse IgG2b, k
Purification	Affinity purified by Protein G
Buffer Solution	1M TBS(pH=7.4)
Storage	Shipped at 4°C. Store at -20°C for one year. Avoid repeated freeze/thaw cycles.
Attention	This product as supplied is intended for research use only, not for use in human, therapeutic or diagnostic applications.
PubMed	PubMed

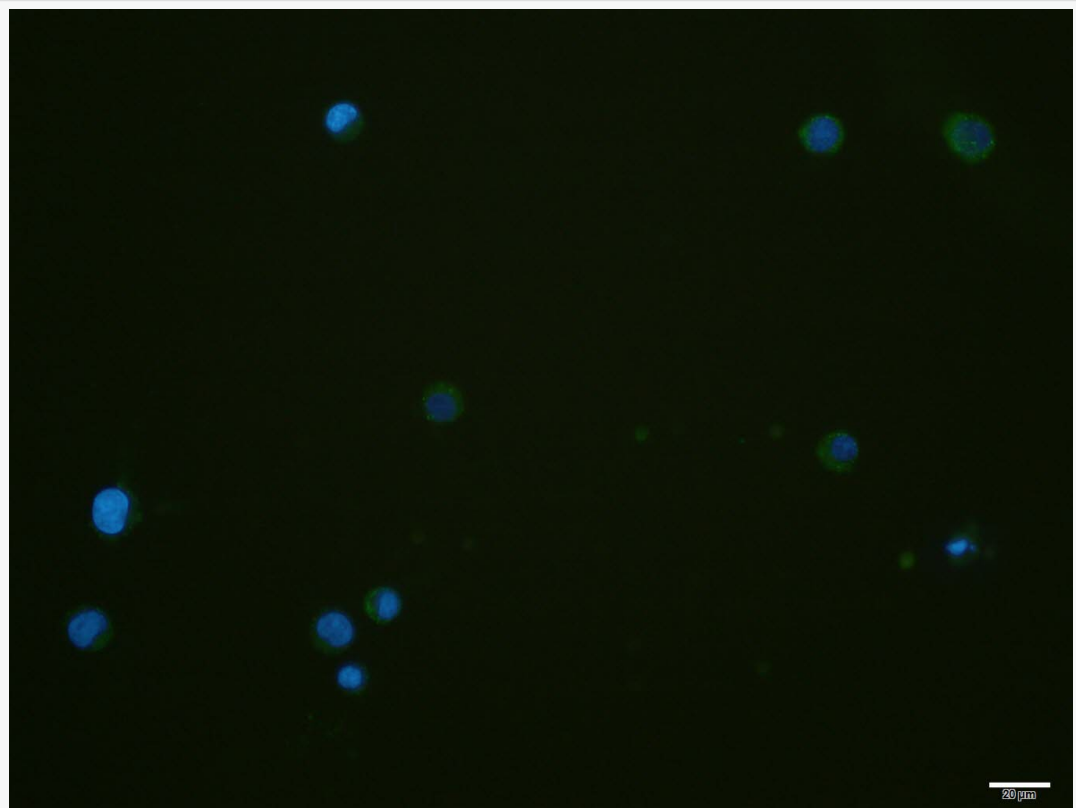
**Product
Detail**

ITGAL encodes the integrin alpha L chain. Integrins are heterodimeric integral membrane proteins composed of an alpha chain and a beta chain. This I-domain containing alpha integrin combines with the beta 2 chain (ITGB2) to form the integrin lymphocyte function-associated antigen-1 (LFA-1), which is expressed on all leukocytes. LFA-1 plays a central role in leukocyte intercellular adhesion through interactions with its ligands, ICAMs 1-3 (intercellular adhesion molecules 1 through 3), and also functions in lymphocyte costimulatory signaling. Two transcript variants encoding different isoforms have been found for this gene. [provided by RefSeq, Jul 2008]

SWISS:
P20701

Gene ID:
3683

**Product
Picture**



Jurkat cell; 4% Paraformaldehyde-fixed; Triton X-100 at room temperature for 20 min; Blocking buffer (normal goat serum, C-0005) at 37°C for 20 min; Antibody incubation with (human CD11a) monoclonal Antibody, Unconjugated



(SLM-30013M) 1:100, 90 minutes at 37°C; followed by a conjugated Goat Anti-Mouse IgG antibody at 37°C for 90 minutes, DAPI (blue, C02-04002) was used to stain the cell nuclei.