

Mouse Anti-phospho-Tau (Thr231)antibody

SLM-25325M

Product Name	phospho-Tau (Thr231)
Chinese Name	磷酸化微管相关蛋白单克隆抗体
Alias	Tau (phospho T231); p-Tau (phospho T231); Tau(Phospho-Thr231); MAPT(phospho T231); p-Tau(Thr231); MAPT; Microtubule-associated protein Tau; AI413597; AW045860; DDPAC; Disinhibition dementia parkinsonism amyotrophy complex; FLJ31424; FTDP 17; FTDP17; G Protein beta 1 gamma 2 subunit interacting factor 1; G protein beta1/gamma2 subunit interacting factor 1; MAPTL; MGC134287; MGC138549; MGC156663; Microtubule associated protein tau isoform 4; MSTD; Mtapt; MTBT1; MTBT2; Neurofibrillary tangle protein; Paired helical filament tau; PHF tau; PHF-tau; PPND; pTau; RNPTAU; Tauopathy and respiratory failure, included; TAU_HUMAN.
Product Type	Phosphorylated anti
Research Area	Cell biology immunology Neurobiology transcriptional regulatory factor
Immunogen Species	Mouse
Clonality	Monoclonal
React Species	Human WB=1:500-2000
Applications	not yet tested in other applications. optimal dilutions/concentrations should be determined by the end user.
Theoretical molecular weight	46/79kDa
Cellular localization	cytoplasmic The cell membrane
Form	Liquid
immunogen	KLH conjugated synthetic peptide derived from human phospho-Tau (Thr231)
Lsotype	IgG
Purification	affinity purified by Protein A
Buffer Solution	1M PBS(pH7.4)
Attention	This product as supplied is intended for research use only, not for use in

human, therapeutic or diagnostic applications.

PubMed

[PubMed](#)

Tau proteins are important Promotes microtubule assembly and stability, and might be involved in the establishment and maintenance of neuronal polarity. The C-terminus binds axonal microtubules while the N-terminus binds neural plasma membrane components, suggesting that tau functions as a linker protein between both. Axonal polarity is predetermined by tau localization (in the neuronal cell) in the domain of the cell body defined by the centrosome. The short isoforms allow plasticity of the cytoskeleton whereas the longer isoforms may preferentially play a role in its stabilization. Tau proteins subcellular located in the axons of neurons, in the cytosol and in association with plasma membrane components. It expressed in neurons. PNS-tau is expressed in the peripheral nervous system while the others are expressed in the central nervous system.

SWISS:
P10636

Gene ID:
4137

Database links:

Product Detail

[Entrez Gene: 281296](#) Cow

[Entrez Gene: 4137](#) Human

[Entrez Gene: 17762](#) Mouse

[Entrez Gene: 29477](#) Rat

[Omim: 157140](#) Human

[SwissProt: P29172](#) Cow

[SwissProt: P10636](#) Human

[SwissProt: P10637](#) Mouse

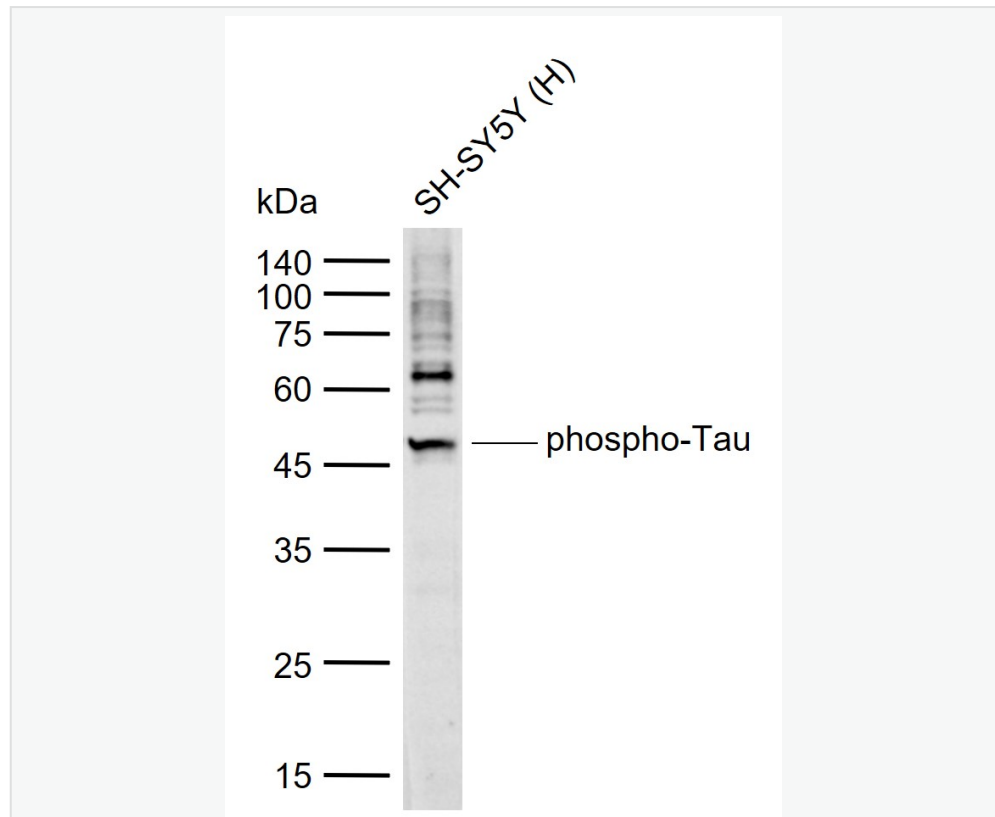
[SwissProt: P19332](#) Rat

[Unigene: 101174](#) Human

[Unigene: 1287](#) Mouse

[Unigene: 2455](#) Rat

Product Picture



Sample:

Lane 1: Human SH-SY5Y cell lysates

Primary: Anti-phospho-Tau (Thr231) (SLM-25325M) at 1/1000 dilution

Secondary: IRDye800CW Goat Anti-Mouse IgG at 1/20000 dilution

Predicted band size: 46/79 kDa

Observed band size: 50 kDa