

Rabbit Anti-PHAP1 antibody

SL6083R

Product Name PHAP1

Chinese Name 蛋白磷酸酶 2A 抑制剂 1 抗体

Alias Acidic leucine-rich nuclear phosphoprotein 32 family member A; Acidic nuclear phosphoprotein 32 family member A; C15orf1; Acidic nuclear phosphoprotein pp32; AN32A_HUMAN; ANP32A; I1PP2A; Inhibitor 1 of protein phosphatase 2A; Lanp; Leucine Rich Acidic Nuclear Protein; Leucine-rich acidic nuclear protein; MAPM; Mapmodulin; PHAPI; Potent heat stable protein phosphatase 2A inhibitor I1PP2A; Potent heat-stable protein phosphatase 2A inhibitor I1PP2A; PP32; Putative HLA DR associated protein I; Putative HLA-DR-associated protein I; Putative Human HLA Class II Associated Protein; Putative human HLA class II associated protein I.

Research Area Tumour Cell biology immunology transcriptional regulatory factor

Immunogen Species Rabbit

Clonality Polyclonal

React Species Human, Mouse, Rat, (predicted: Dog, Pig, Cow, Horse, Rabbit,)

Applications WB=1:500-2000,IHC-P=1:100-500,IHC-F=1:100-500,IF=1:100-500 (Paraffin sections need antigen repair)
not yet tested in other applications.
optimal dilutions/concentrations should be determined by the end user.

Theoretical molecular weight 27kDa

Cellular localization The nucleus cytoplasmic

Form Liquid

Concentration 1mg/ml

immunogen KLH conjugated synthetic peptide derived from human PHAP1: 41-140/249

Lsotype IgG

Purification affinity purified by Protein A

Buffer Solution 1M TBS(pH7.4) with 1% BSA, 3% Proclin300 and 50% Glycerol.



Storage	Shipped at 4°C. Store at -20 °C for one year. Avoid repeated freeze/thaw cycles.
Attention	This product as supplied is intended for research use only, not for use in human, therapeutic or diagnostic applications.
PubMed	PubMed Implicated in a number of cellular processes, including proliferation, differentiation, caspase-dependent and caspase-independent apoptosis, suppression of transformation (tumor suppressor), inhibition of protein phosphatase 2A, regulation of mRNA trafficking and stability in association with ELAVL1, and inhibition of acetyltransferases as part of the INHAT (inhibitor of histone acetyltransferases) complex. Plays a role in E4F1-mediated transcriptional repression.
	Subunit: Component of the SET complex, which also contains SET, APEX1, HMGB2 and NME1. Directly interacts with SET. Interacts with ATXN1/SCA1. Interacts with MAP1B (By similarity). Interacts with ELAVL1. Part of the INHAT (inhibitor of histone acetyltransferases) complex. Interacts with E4F1.
	Subcellular Location: Nucleus. Cytoplasm. Endoplasmic reticulum. Note=Translocates to the cytoplasm during the process of neuritogenesis (By similarity). Shuttles between nucleus and cytoplasm.
Product Detail	Tissue Specificity: Expressed in all tissues tested. Highly expressed in kidney and skeletal muscle, moderate levels of expression in brain, placenta and pancreas, and weakly expressed in lung. Found in all regions of the brain examined (amygdala, caudate nucleus, corpus callosum, hippocampus and thalamus), with highest levels in amygdala.
	Similarity: Belongs to the ANP32 family. Contains 4 LRR (leucine-rich) repeats. Contains 1 LRRCT domain.
	SWISS: P39687
	Gene ID: 8125
	Database links: Entrez Gene: 8125 Human

[Entrez Gene: 11737](#) Mouse

[Entrez Gene: 25379](#) Rat

[Omim: 600832](#) Human

[SwissProt: P39687](#) Human

[SwissProt: O35381](#) Mouse

[SwissProt: P49911](#) Rat

[Unigene: 458747](#) Human

[Unigene: 269088](#) Mouse

[Unigene: 10123](#) Rat

**Product
Picture**

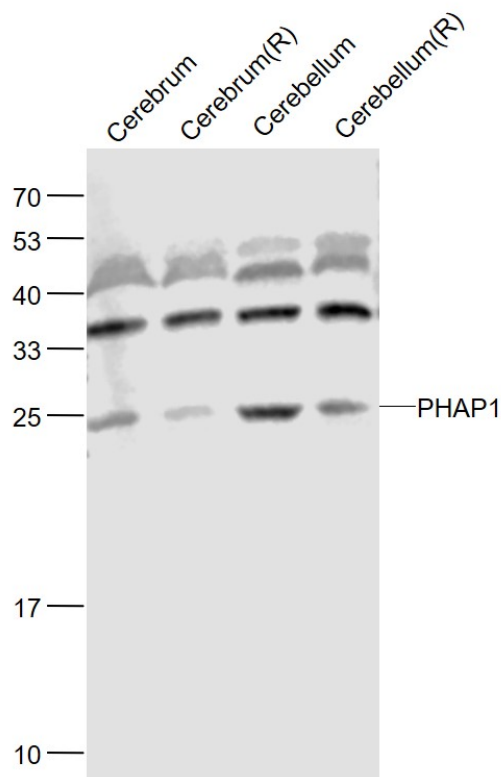


Primary: Anti-PHAP1 (SL6083R) at 1/1000 dilution

Secondary: IRDye800CW Goat Anti-Rabbit IgG at 1/20000 dilution

Predicted band size: 27 kD

Observed band size: 25 kD



Sample:

Cerebrum (Mouse) Lysate at 40 ug

Cerebrum (Rat) Lysate at 40 ug

Cerebellum (Mouse) Lysate at 40 ug

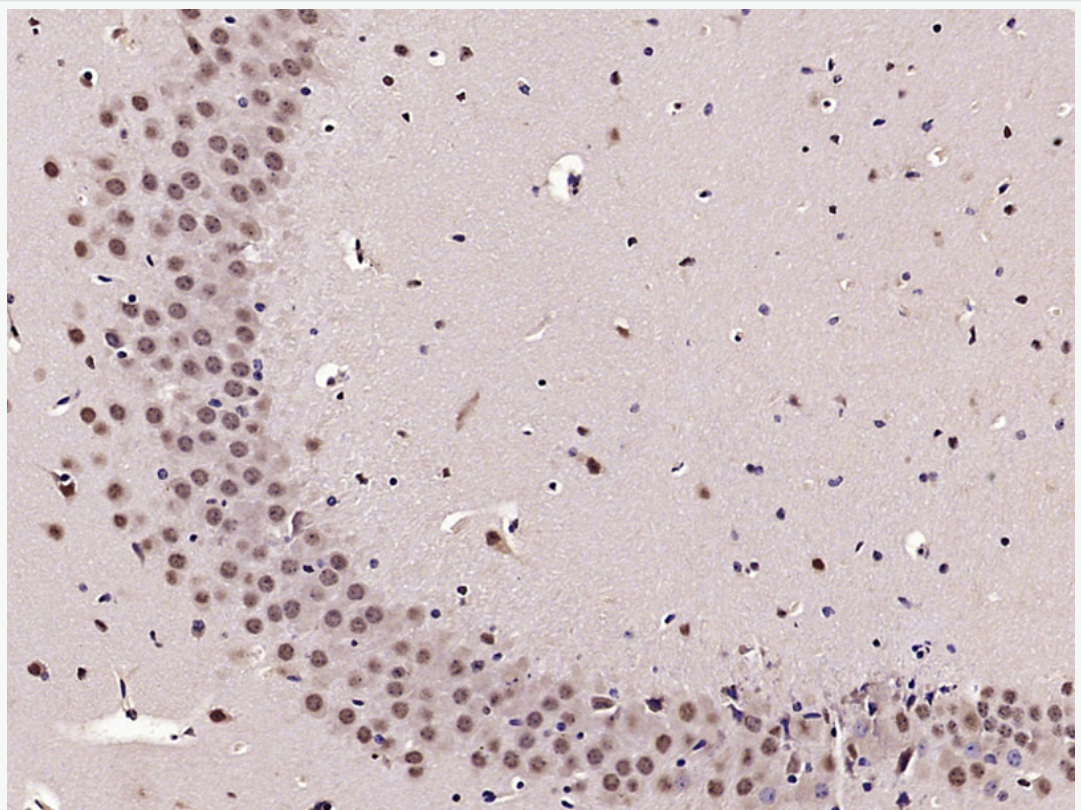
Cerebellum (Rat) Lysate at 40 ug

Primary: Anti-PHAP1 (SL6083R) at 1/1000 dilution

Secondary: IRDye800CW Goat Anti-Rabbit IgG at 1/20000 dilution

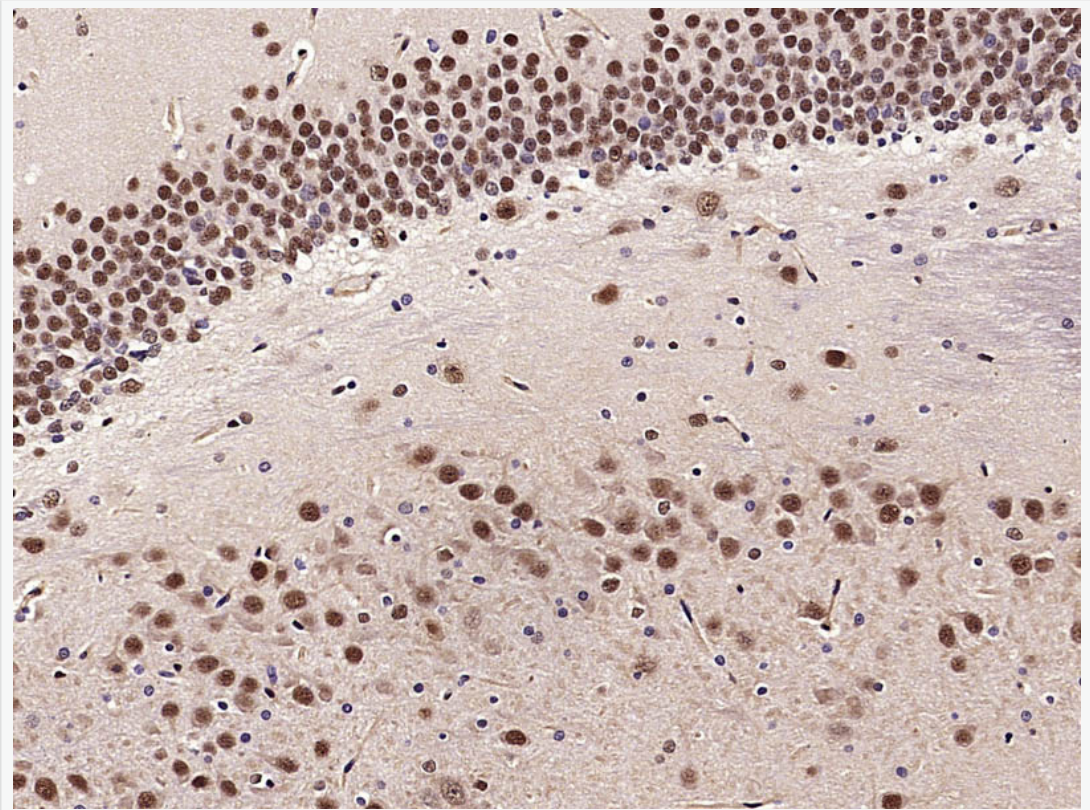
Predicted band size: 27 kD

Observed band size: 27 kD

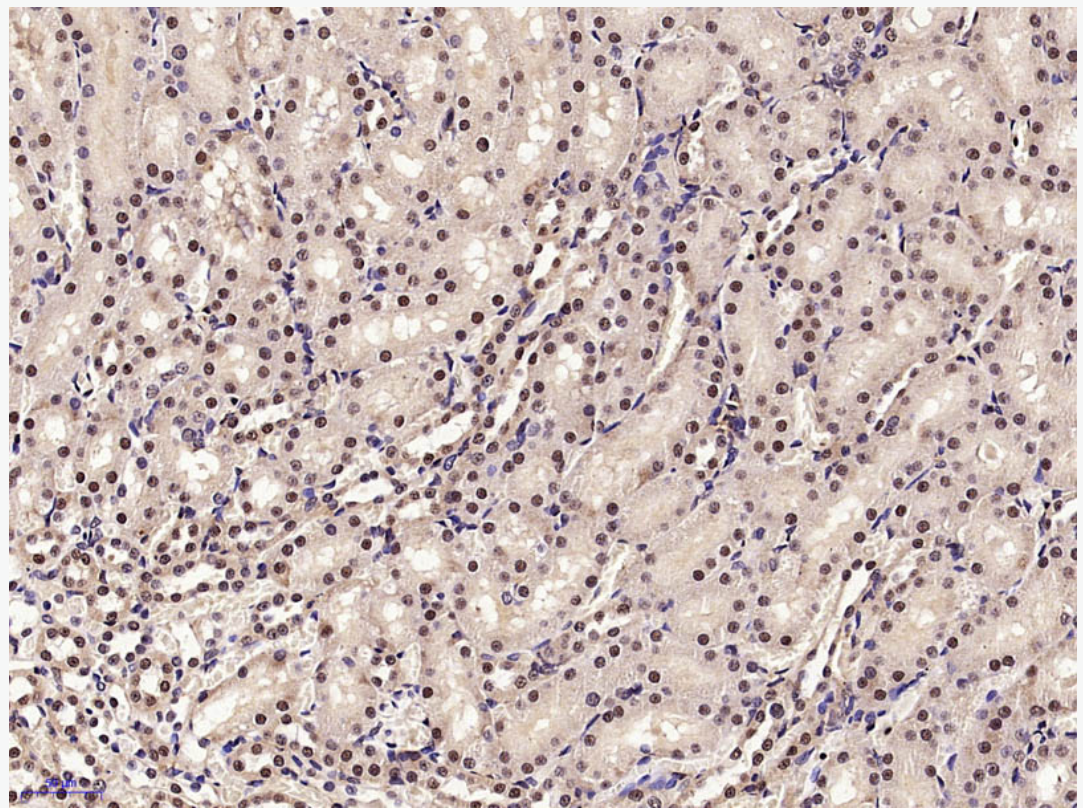


Paraformaldehyde-fixed, paraffin embedded (Mouse brain); Antigen retrieval by microwave in sodium citrate buffer (pH6.0) ; Block endogenous peroxidase by 3% hydrogen peroxide for 30 minutes; Blocking buffer (3% BSA) at RT for 30min; Antibody incubation with (PHAP1) Polyclonal Antibody, Unconjugated (SL6083R) at 1:400 overnight at 4°C, followed by conjugation to the secondary

antibody (labeled with HRP)and DAB staining.



Paraformaldehyde-fixed, paraffin embedded (Rat brain); Antigen retrieval by microwave in sodium citrate buffer (pH6.0) ; Block endogenous peroxidase by 3% hydrogen peroxide for 30 minutes; Blocking buffer (3% BSA) at RT for 30min; Antibody incubation with (PHAP1) Polyclonal Antibody, Unconjugated (SL6083R) at 1:400 overnight at 4°C, followed by conjugation to the secondary antibody (labeled with HRP)and DAB staining.



Paraformaldehyde-fixed, paraffin embedded (Rat kidney); Antigen retrieval by microwave in sodium citrate buffer (pH6.0) ; Block endogenous peroxidase by 3% hydrogen peroxide for 30 minutes; Blocking buffer (3% BSA) at RT for 30min; Antibody incubation with (PHAP1) Polyclonal Antibody, Unconjugated (SL6083R) at 1:400 overnight at 4°C, followed by conjugation to the secondary antibody (labeled with HRP)and DAB staining.