

## Rabbit Anti-MTSS1 antibody

SL6075R

<b>Product Name</b>	MTSS1
<b>Chinese Name</b>	Tumour 转移抑制蛋白 1
<b>Alias</b>	metastasis suppressor 1; Metastasis suppressor protein 1; Metastasis suppressor YGL 1; MIM; MIMA; MIMB; missing in metastasis; Missing in metastasis protein; MTSS 1; MTSS1_HUMAN.
<b>Research Area</b>	Tumour Chromatin and nuclear signals Signal transduction Cytoskeleton
<b>Immunogen Species</b>	Rabbit
<b>Clonality</b>	Polyclonal
<b>React Species</b>	Human,Mouse(predicted:Rat,Chicken,Dog,Cow,Horse,Rabbit)
<b>Applications</b>	WB=1:500-2000 (Paraffin sections need antigen repair) not yet tested in other applications. optimal dilutions/concentrations should be determined by the end user.
<b>Theoretical molecular weight</b>	82kDa
<b>Cellular localization</b>	cytoplasmic
<b>Form</b>	Liquid
<b>Concentration</b>	1mg/ml
<b>immunogen</b>	KLH conjugated synthetic peptide derived from human MTSS1: 101-200/755
<b>Lsotype</b>	IgG
<b>Purification</b>	affinity purified by Protein A
<b>Buffer Solution</b>	Human,Mouse(predicted:Rat,Chicken,Dog,Cow,Horse,Rabbit)1M TBS(pH7.4) with 1% BSA, Human,Mouse(predicted:Rat,Chicken,Dog,Cow,Horse,Rabbit)3% Proclin300 and 50% Glycerol.
<b>Storage</b>	Shipped at 4°C. Store at -20 °C for one year. Avoid repeated freeze/thaw cycles.
<b>Attention</b>	This product as supplied is intended for research use only, not for use in human, therapeutic or diagnostic applications.
<b>PubMed</b>	<a href="#">PubMed</a>

May be related to cancer progression or tumor metastasis in a variety of organ sites, most likely through an interaction with the actin cytoskeleton.

**Function:**

May be related to cancer progression or tumor metastasis in a variety of organ sites, most likely through an interaction with the actin cytoskeleton.

**Subunit:**

Binds to actin. Binds to the cytoplasmic domain of receptor protein tyrosine phosphatase delta.

**Subcellular Location:**

Cytoplasm, cytoskeleton.

**Tissue Specificity:**

Expressed in many tissues, including spleen, thymus, prostate, testis, uterus, colon, and peripheral blood.

**Product Detail**

**SWISS:**

O43312

**Gene ID:**

9788

**Database links:**

[Entrez Gene: 9788](#) Human

[Entrez Gene: 211401](#) Mouse

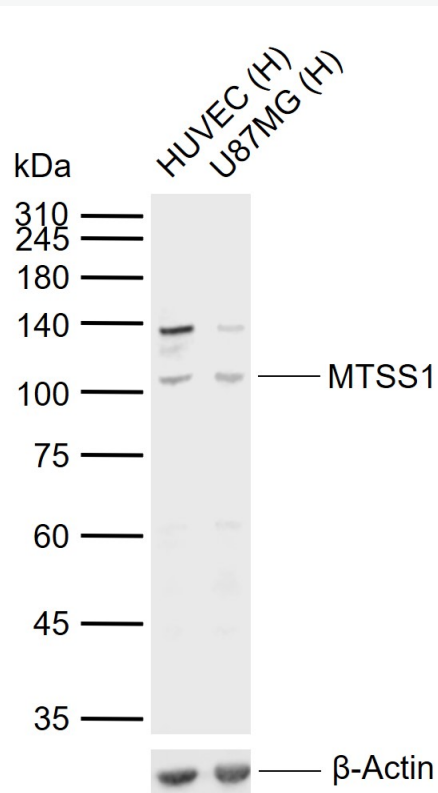
[Entrez Gene: 362918](#) Rat

[Oimim: 608486](#) Human

[SwissProt: O43312](#) Human

[SwissProt: Q8R1S4](#) Mouse

**Product Picture**



Sample:

Lane 1: Human HUVEC cell lysates

Lane 2: Human U87MG cell lysates

Primary: Anti-MTSS1 (SL6075R) at 1/1000 dilution

Secondary: IRDye800CW Goat Anti-Rabbit IgG at 1/20000 dilution

Predicted band size: 82 kDa

Observed band size: 105 kDa