

Rabbit Anti-MFSD2A antibody

SL6073R

Product Name MFSD2A

Chinese Name 促进调解蛋白家族 2A 抗体

Alias Major facilitator superfamily domain containing 2; Major facilitator superfamily domain containing 2A; Major facilitator superfamily domain-containing protein 2A; MFS2A_HUMAN; MFSD2; MFSD2A.

Research Area Tumour Neurobiology Signal transduction transcriptional regulatory factor G protein-coupled receptor

Immunogen Species Rabbit

Clonality Polyclonal

React Species Human, Mouse, Rat, (predicted: Chicken, Dog, Pig, Cow, Horse, Rabbit,)
WB=1:500-2000,IHC-P=1:100-500,IHC-F=1:100-500,IF=1:100-500,Flow-Cyt=0.2ug/test
(Paraffin sections need antigen repair)

Applications not yet tested in other applications.
optimal dilutions/concentrations should be determined by the end user.

Theoretical molecular weight 60kDa

Cellular localization cytoplasmic The cell membrane

Form Liquid

Concentration 1mg/ml

immunogen KLH conjugated synthetic peptide derived from human MFSD2A: 331-430/543

Lsotype IgG

Purification affinity purified by Protein A

Buffer Solution 1M TBS(pH7.4) with 1% BSA, 3% Proclin300 and 50% Glycerol.

Storage Shipped at 4°C. Store at -20 °C for one year. Avoid repeated freeze/thaw cycles.

Attention This product as supplied is intended for research use only, not for use in human, therapeutic or diagnostic applications.

PubMed [PubMed](#)

MFSD2 is a 543 amino acid multi-pass membrane protein of the endoplasmic reticulum that is involved in beta-adrenergic signaling during thermogenesis. Existing as three alternatively spliced isoforms, MFSD2 plays a role in G1 regulation and is encoded by a gene that maps to human chromosome 1p34.2. Human chromosome 1 spans 260 million base pairs, contains over 3,000 genes, comprises nearly 8% of the human genome and houses a large number of disease-associated genes, including those that are involved in familial adenomatous polyposis, Stickler syndrome, Parkinson's disease, Gaucher disease, schizophrenia and Usher syndrome.

Function:

Play a role in thermogenesis via beta-adrenergic signaling pathway.

Subcellular Location:

Endoplasmic reticulum membrane.

Tissue Specificity:

Similarity:

Belongs to the major facilitator superfamily.

**Product
Detail**

SWISS:

Q8NA29

Gene ID:

84879

Database links:

[Entrez Gene: 84879](#) Human

[Entrez Gene: 76574](#) Mouse

[Entrez Gene: 298504](#) Rat

[Omid: 614397](#) Human

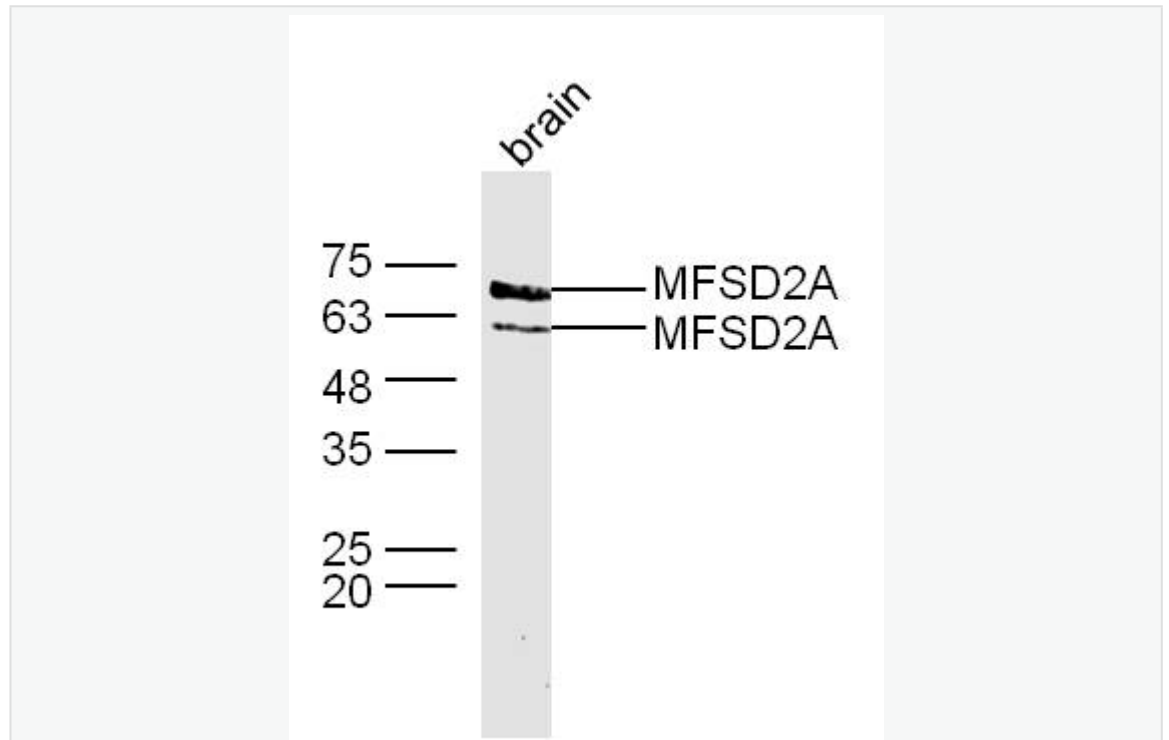
[SwissProt: Q8NA29](#) Human

[SwissProt: Q9DA75](#) Mouse

[Unigene: 655177](#) Human

[Unigene: 331842](#) Mouse

**Product
Picture**



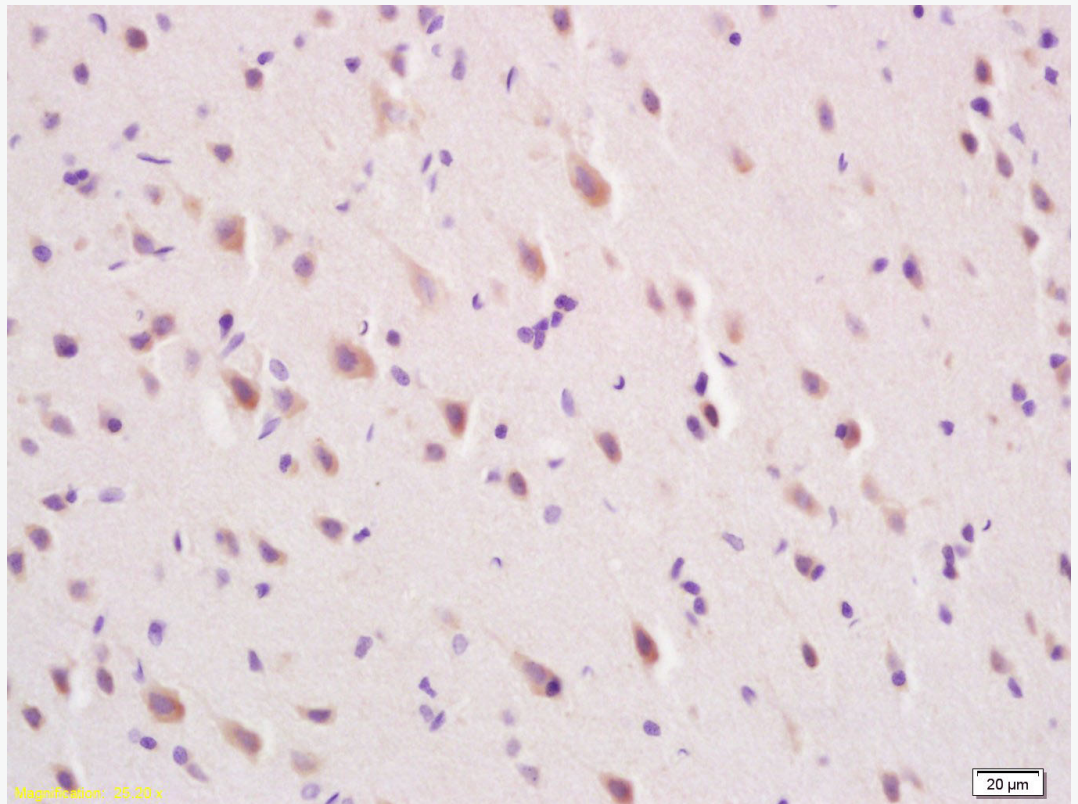
Sample: Brain (Mouse) Lysate at 40 ug

Primary: Anti-MFSD2A (SL6073R) at 1/300 dilution

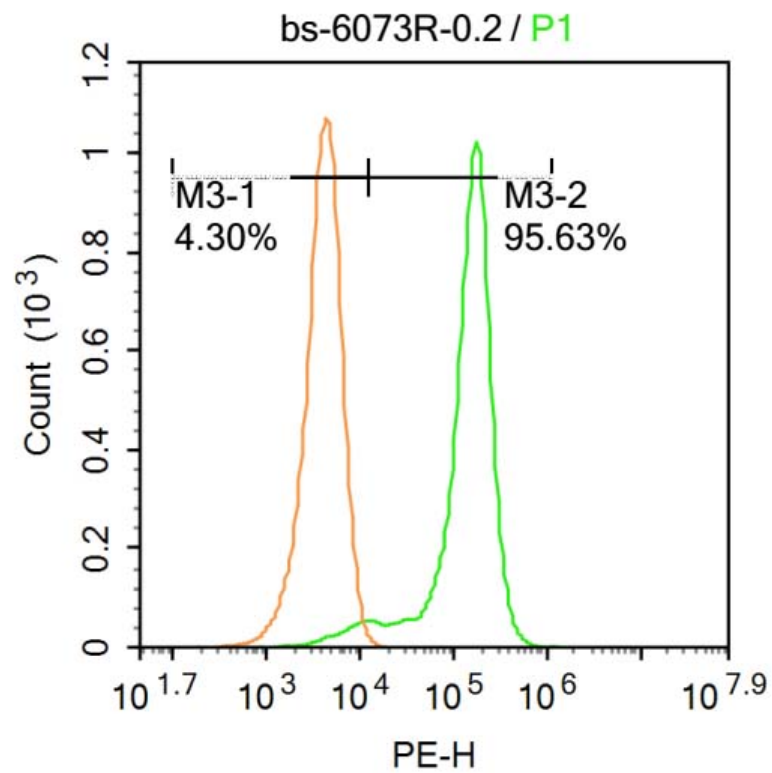
Secondary: IRDye800CW Goat Anti-Rabbit IgG at 1/20000 dilution

Predicted band size: 60 kD

Observed band size: 60/65 kD



Tissue/cell: rat brain tissue; 4% Paraformaldehyde-fixed and paraffin-embedded;
Antigen retrieval: citrate buffer (1M, pH 6.0), Boiling bathing for 15min; Block endogenous peroxidase by 3% Hydrogen peroxide for 30min; Blocking buffer (normal goat serum,C-0005) at 37°C for 20 min;
Incubation: Anti-MFSD2A Polyclonal Antibody, Unconjugated(SL6073R) 1:200, overnight at 4°C, followed by conjugation to the secondary antibody(SP-0023) and DAB(C-0010) staining



Blank control:Molt-4.

Primary Antibody (green line): Rabbit Anti-MFSD2A antibody (SL6073)

Dilution: 0.2 μ g /10⁶ cells;

Isotype Control Antibody (orange line): Rabbit IgG .

Secondary Antibody : Goat anti-rabbit IgG-PE

Dilution: 0.2 μ g /test.

Protocol

The cells were fixed with 4% PFA (10min at room temperature)and then permeabilized with 20% PBST for 20 min at-20°C. The cells were then incubated in 5%BSA to block non-specific protein-protein interactions for 30 min at at room temperature .Cells



SunLong Biotech Co.,LTD

Tel: 0086-571-56623320 Fax:0086-571-56623318

E-mail:sales@sunlongbiotech.com

www.sunlongbiotech.com

stained with Primary Antibody for 30 min at room temperature. The secondary antibody used for 40 min at room temperature. Acquisition of 20,000 events was performed.