

Rabbit Anti-phospho-LLGL1 + LLGL2 (Ser650+Ser654)antibody

SL6070R

Product Name	phospho-LLGL1 + LLGL2 (Ser650+Ser654)
Chinese Name	磷酸化相似 Tumour 抑制基因 HUGL 抗体
Alias	LLGL1 + LLGL2 (phospho S650 + S654); LLGL1 + LLGL2 (phospho Ser650 + Ser654); p-LLGL1 + p-LLGL2 (S650 + S654); p-LLGL1/LLGL2 (Ser650 + Ser654); p-LLGL1/LLGL2 (S650 + S654); p-LLGL1/LLGL2 (Ser650/654); DLG4; HGL; HUGL; HUGL1; lethal giant larvae homolog 1; lethal giant larvae homolog 2; Lethal(2) giant larvae protein homolog 1; Lethal(2) giant larvae protein homolog 2; LGL2; LLGL; L2GL1_HUMAN; L2GL2_HUMAN.
Product Type	Phosphorylated anti
Research Area	Tumour Cell biology Signal transduction Cyclin Cytoskeleton
Immunogen Species	Rabbit
Clonality	Polyclonal
React Species	Rat(predicted:Human,Mouse,Chicken,Dog,Pig,Cow,Horse,GuineaPig,k) ELISA=1:5000-10000
Applications	not yet tested in other applications. optimal dilutions/concentrations should be determined by the end user.
Theoretical molecular weight	117kDa
Cellular localization	cytoplasmic The cell membrane
Form	Liquid
Concentration	1mg/ml
immunogen	KLH conjugated synthesised phosphopeptide derived from mouse LLGL1 around the phosphorylation site of Ser650+Ser654: PL(p-S)RVK(p-S)
Lsotype	IgG
Purification	affinity purified by Protein A
Buffer	Rat(predicted:Human,Mouse,Chicken,Dog,Pig,Cow,Horse,GuineaPig,k)1M



Solution	TBS(pH7.4) with 1% BSA, Rat(predicted:Human,Mouse,Chicken,Dog,Pig,Cow,Horse,GuineaPig,k)3% Proclin300 and 50% Glycerol.
Storage	Shipped at 4°C. Store at -20 °C for one year. Avoid repeated freeze/thaw cycles.
Attention	This product as supplied is intended for research use only, not for use in human, therapeutic or diagnostic applications.
PubMed	PubMed LLGL1 is a protein that is similar to a tumor suppressor in Drosophila. The protein is part of a cytoskeletal network and is associated with nonmuscle myosin II heavy chain and a kinase that specifically phosphorylates this protein at serine residues. The gene for LLGL1 is located within the Smith-Magenis syndrome region on chromosome 17. LLGL2 is a protein similar to lethal giant larvae of Drosophila. In fly, the protein's ability to localize cell fate determinants is regulated by the atypical protein kinase C (aPKC). In human, this protein interacts with aPKC-containing complexes and is cortically localized in mitotic cells.
	Function: Cortical cytoskeleton protein found in a complex involved in maintaining cell polarity and epithelial integrity. Involved in the regulation of mitotic spindle orientation, proliferation, differentiation and tissue organization of neuroepithelial cells.
	Subunit: Associated with nonmuscle myosin II heavy chain. Interacts with PRKCI/aPKC, PARD6B/Par-6 and PARD6A. Interacts with STX4A.
Product Detail	Subcellular Location: Cytoplasm, cytoskeleton. Note=Localized to the lateral membrane during the polarization and formation cell-cell contacts.
	Tissue Specificity: Expressed in brain, kidney, and muscle but is barely seen in heart and placenta. Down-regulated or lost in all cell lines and in most of the tumor samples analyzed. Loss was associated with advanced stage of the disease.
	Post-translational modifications: Phosphorylated upon DNA damage, probably by ATM or ATR. Phosphorylated at least at Ser-663 by PRKCI.
	Similarity: Belongs to the WD repeat L(2)GL family. Contains 14 WD repeats.
	SWISS:

Q15334

Gene ID:
3996

Database links:

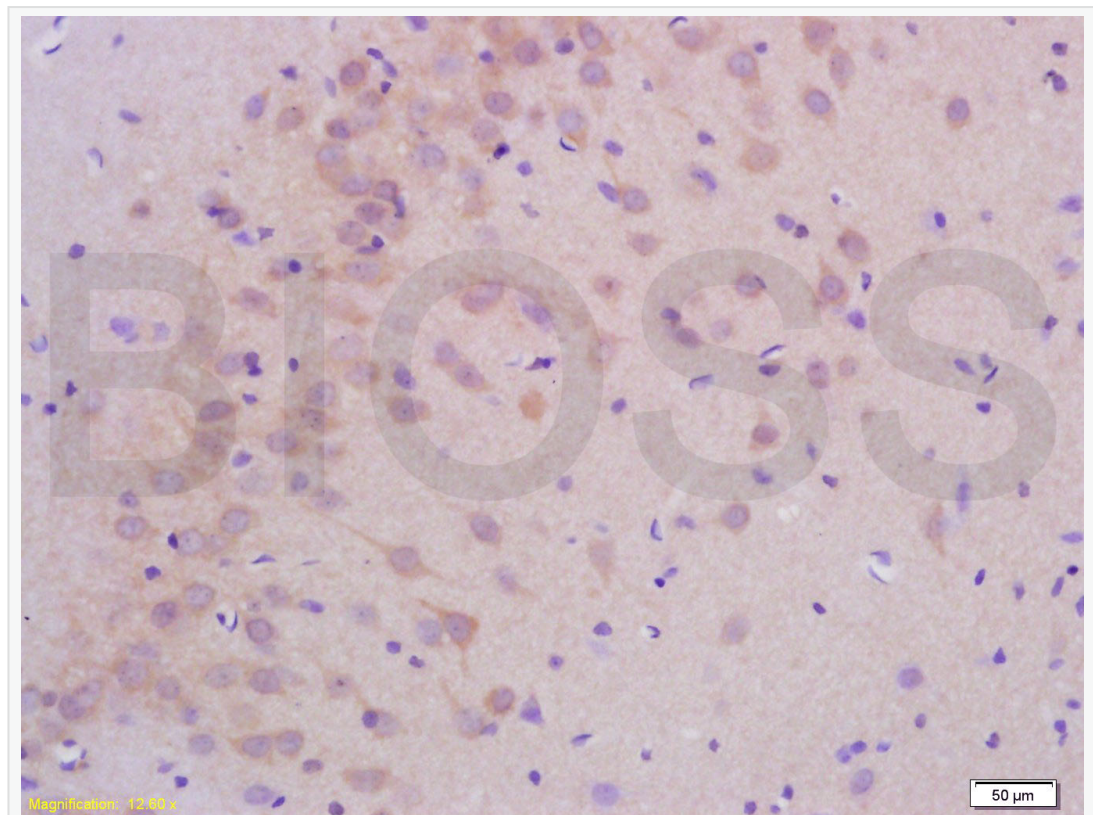
[Entrez Gene: 3996](#) Human

[Omim: 600966](#) Human

[SwissProt: Q15334](#) Human

[Unigene: 513983](#) Human

**Product
Picture**



Tissue/cell: rat brain tissue; 4% Paraformaldehyde-fixed and paraffin-embedded;

Antigen retrieval: citrate buffer

(Rat(predicted:Human,Mouse,Chicken,Dog,Pig,Cow,Horse,GuineaPig,k)1M, pH 6.0), Boiling bathing for 15min; Block endogenous peroxidase by 3% Hydrogen peroxide for 30min; Blocking buffer (normal goat serum,C-0005) at 37°C for 20 min;

Incubation: Anti-phospho-LLGL1+LLGL2(Ser650+Ser654) Polyclonal Antibody, Unconjugated (SL6070R) 1:200, overnight at 4°C, followed by conjugation to the secondary antibody(SP-0023) and DAB(C-0010) staining