

## Rabbit Anti-LLGL1 antibody

SL6069R

**Product Name** LLGL1

**Chinese Name** 相似 Tumour 抑制基因 HUGL 抗体

**Alias** Lethal(2) giant larvae protein homolog 1; DLG4; Hugl-1; Human homolog to the D-lgl gene protein;DLG4; HUGL; HUGL1; L2GL1\_HUMAN.

**Research Area** Tumour Cell biology Signal transduction Cyclin Cytoskeleton

**Immunogen Species** Rabbit

**Clonality** Polyclonal

**React Species** Rat, (predicted: Human, Mouse, Dog, Cow, Horse, )

ELISA=1:5000-10000

**Applications** not yet tested in other applications.  
optimal dilutions/concentrations should be determined by the end user.

**Theoretical molecular weight** 117kDa

**Cellular localization** cytoplasmic The cell membrane

**Form** Liquid

**Concentration** 1mg/ml

**immunogen** KLH conjugated synthetic peptide derived from human LLGL1/LLGL2:  
801-900/1064

**Lsotype** IgG

**Purification** affinity purified by Protein A

**Buffer Solution** 1M TBS(pH7.4) with 1% BSA, 3% Proclin300 and 50% Glycerol.

**Storage** Shipped at 4°C. Store at -20 °C for one year. Avoid repeated freeze/thaw cycles.

**Attention** This product as supplied is intended for research use only, not for use in human, therapeutic or diagnostic applications.

**PubMed** [PubMed](#)

**Product** LLGL1 is a protein that is similar to a tumor suppressor in Drosophila. The protein is

## **Detail**

part of a cytoskeletal network and is associated with nonmuscle myosin II heavy chain and a kinase that specifically phosphorylates this protein at serine residues. The gene for LLGL1 is located within the Smith-Magenis syndrome region on chromosome 17. LLGL2 is a protein similar to lethal giant larvae of *Drosophila*. In fly, the protein's ability to localize cell fate determinants is regulated by the atypical protein kinase C (aPKC). In human, this protein interacts with aPKC-containing complexes and is cortically localized in mitotic cells.

### **Subunit:**

Associated with nonmuscle myosin II heavy chain. Interacts with PRKCI/aPKC, PARD6B/Par-6 and PARD6A. Interacts with STX4A.

### **Subcellular Location:**

Cytoplasm, cytoskeleton. Note=Localized to the lateral membrane during the polarization and formation cell-cell contacts.

### **Tissue Specificity:**

Expressed in brain, kidney, and muscle but is barely seen in heart and placenta. Down-regulated or lost in all cell lines and in most of the tumor samples analyzed. Loss was associated with advanced stage of the disease.

### **Similarity:**

Belongs to the WD repeat L(2)GL family.  
Contains 14 WD repeats.

### **SWISS:**

Q15334

### **Gene ID:**

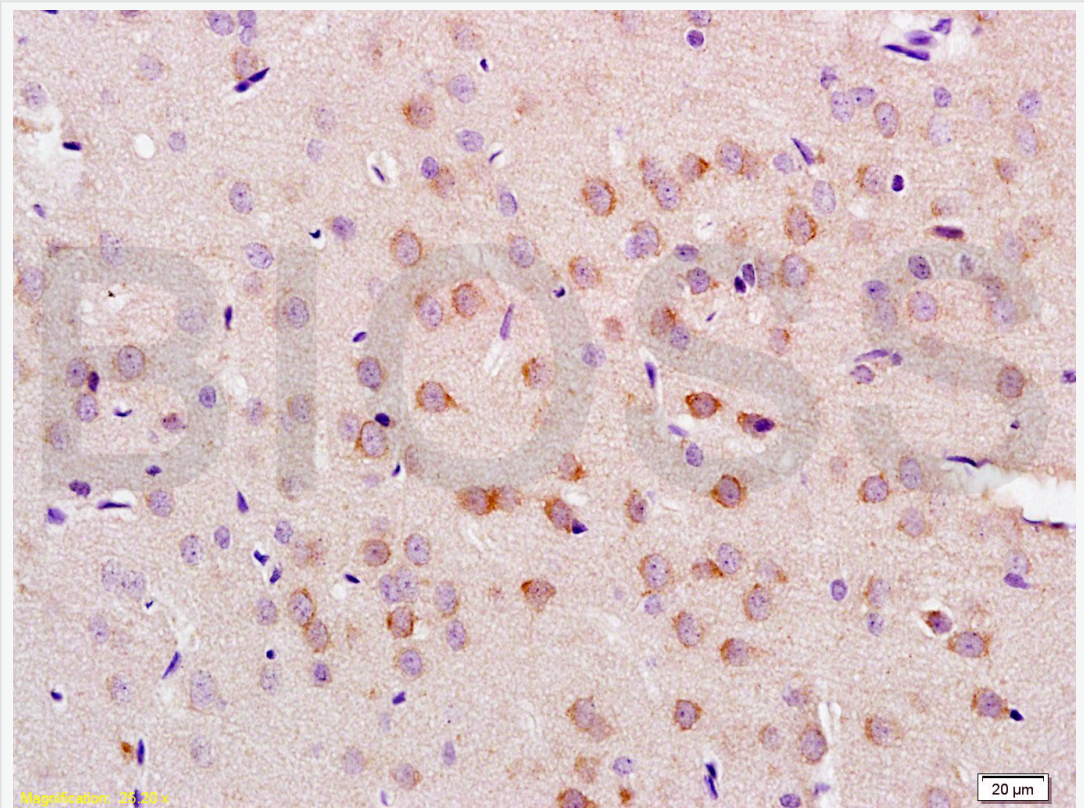
3996

### **Database links:**

[Entrez Gene: 3996](#) Human

[SwissProt: Q15334](#) Human

**Product  
Picture**



Tissue/cell: rat brain tissue; 4% Paraformaldehyde-fixed and paraffin-embedded;  
Antigen retrieval: citrate buffer ( 1M, pH 6.0 ), Boiling bathing for 15min; Block  
endogenous peroxidase by 3% Hydrogen peroxide for 30min; Blocking buffer  
(normal goat serum,C-0005) at 37°C for 20 min;  
Incubation: Anti-LLGL1/2 Polyclonal Antibody, Unconjugated(SL6069R) 1:200,  
overnight at 4°C, followed by conjugation to the secondary antibody(SP-0023)  
and DAB(C-0010) staining