

Rabbit Anti-PRSS8 antibody

SL6064R

Product Name PRSS8

Chinese Name 丝氨酸蛋白酶 8 抗体

Alias CAP1; Channel Activating Protease 1; mCAP1; Prostatic; Prostatic heavy chain; protease, serine, 8; Prss8; PRSS8_HUMAN; Serine protease 8.

Research Area Tumour Cell biology Kinases and Phosphatases TumourCell biologyMaker

Immunogen Species Rabbit

Clonality Polyclonal

React Species Human, Mouse, Rat, (predicted: Dog, Pig, Cow,)

Applications WB=1:500-2000,IHC-P=1:100-500,IHC-F=1:100-500,IF=1:100-500 (Paraffin sections need antigen repair)
not yet tested in other applications.
optimal dilutions/concentrations should be determined by the end user.

Theoretical molecular weight 30/33kDa

Cellular localization The cell membrane Extracellular matrix Secretory protein

Form Liquid

Concentration 1mg/ml

immunogen KLH conjugated synthetic peptide derived from human PRSS8: 65-165/343

Lsotype IgG

Purification affinity purified by Protein A

Buffer Solution 1M TBS(pH7.4) with 1% BSA, 3% Proclin300 and 50% Glycerol.

Storage Shipped at 4°C. Store at -20 °C for one year. Avoid repeated freeze/thaw cycles.

Attention This product as supplied is intended for research use only, not for use in human, therapeutic or diagnostic applications.

PubMed [PubMed](#)

Product PRSS8 is a member of the trypsin family of serine proteases. It can be found in seminal

Detail

fluid and is highly expressed in prostate epithelia. The proprotein is cleaved to produce a light chain and a heavy chain which are associated by a disulfide bond. The carboxyterminal region contains a GPI anchor sequence, which anchors prostasin to the cell surface. Phospholipase activity is thought to liberate prostasin from the cell, and cleavage of the linker region also releases prostasin. PRSS8 has been proposed as a marker for ovarian cancer, where it is up-regulated, a marker for androgen-refractory prostate cancer, where it is down-regulated, and as an inhibitor of invasiveness in breast cancer.

Function:

Possesses a trypsin-like cleavage specificity.

Subunit:

Heterodimer of two chains, light and heavy, held by a disulfide bond.

Subcellular Location:

Prostasin: Cell membrane; Single-pass membrane protein. Prostasin light chain: Secreted, extracellular space. Note=Found in the seminal fluid. Secreted after cleavage of its C-terminus. Prostasin heavy chain: Secreted, extracellular space. Note=Found in the seminal fluid. Secreted after cleavage of its C-terminus.

Tissue Specificity:

Found in prostate, liver, salivary gland, kidney, lung, pancreas, colon, bronchus and renal proximal tubular cells. In the prostate gland it may be synthesized in epithelial cells, secreted into the ducts, and excreted into the seminal fluid.

Similarity:

Belongs to the peptidase S1 family.
Contains 1 peptidase S1 domain.

SWISS:

Q16651

Gene ID:

5652

Database links:

[Entrez Gene: 5652](#) Human

[Entrez Gene: 76560](#) Mouse

[Entrez Gene: 192107](#) Rat

[Omim: 600823](#) Human

[SwissProt: Q16651](#) Human

[SwissProt: Q9ESD1](#) Mouse

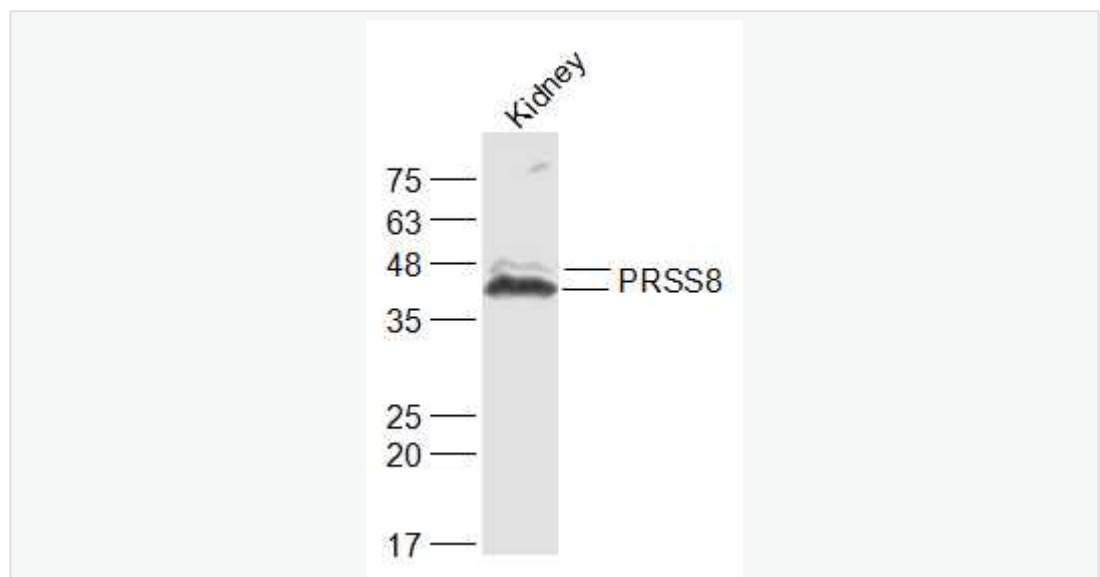
[SwissProt: Q9ES87](#) Rat

[Unigene: 75799](#) Human

[Unigene: 5875](#) Mouse

[Unigene: 107364](#) Rat

**Product
Picture**



Sample:

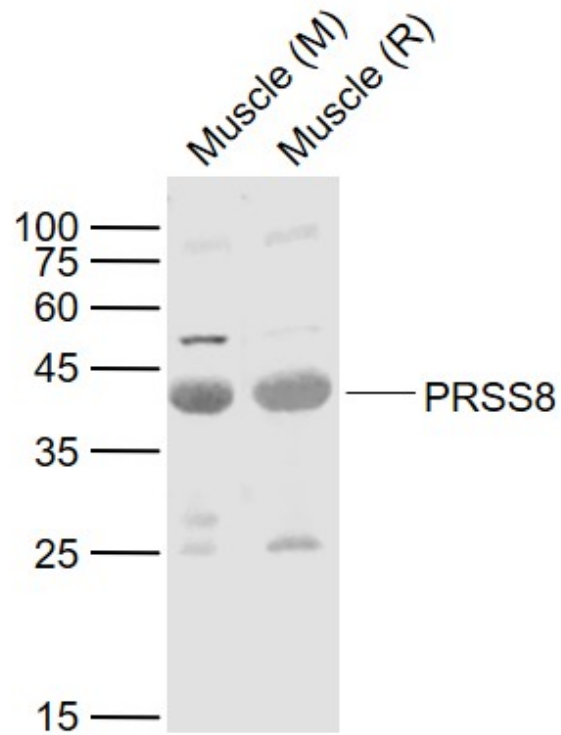
Kidney (Mouse) Lysate at 40 ug

Primary: Anti-PRSS8 (SL6064R) at 1/1000 dilution

Secondary: IRDye800CW Goat Anti-Rabbit IgG at 1/20000 dilution

Predicted band size: 30/33 kD

Observed band size: 40/43 kD



Sample:

Lane 1: Muscle (Mouse) Lysate at 40 ug

Lane 2: Muscle (Rat) Lysate at 40 ug

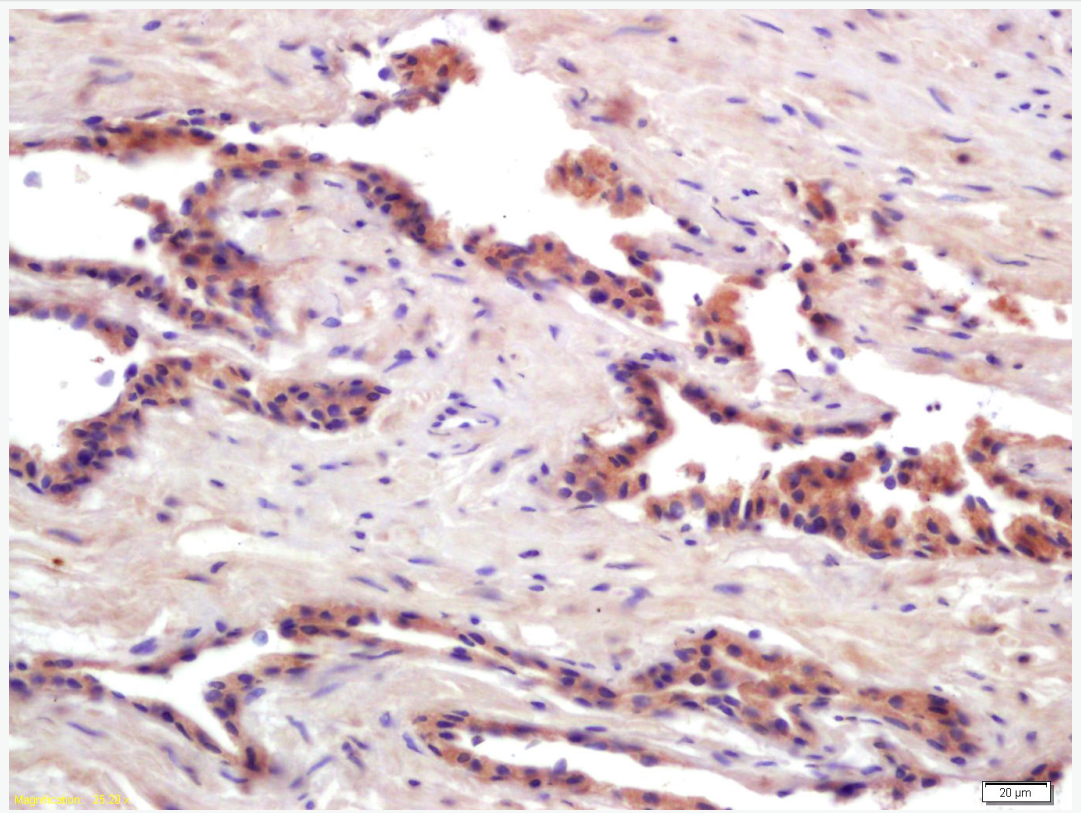
Primary:

Anti- PRSS8 (SL6064R) at 1/1000 dilution

Secondary: IRDye800CW Goat Anti-Rabbit IgG at 1/20000 dilution

Predicted band size: 37-40 kD

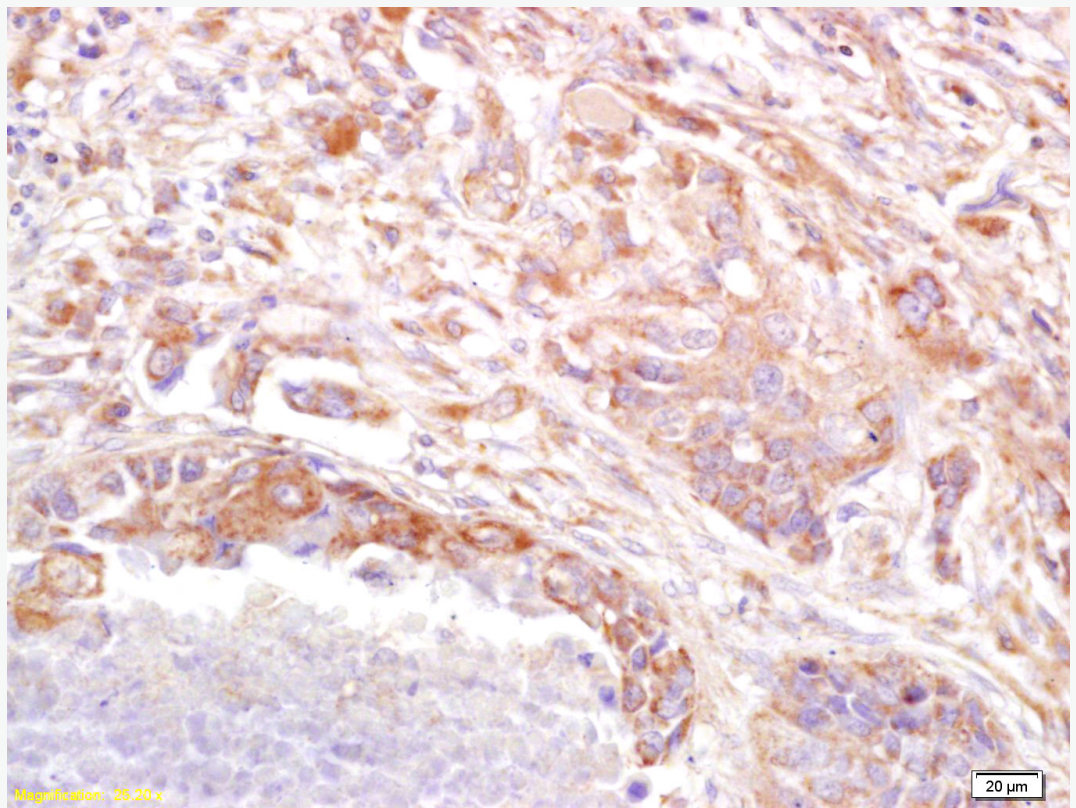
Observed band size: 40 kD



Tissue/cell: human prostate carcinoma; 4% Paraformaldehyde-fixed and paraffin-embedded;

Antigen retrieval: citrate buffer (1M, pH 6.0), Boiling bathing for 15min; Block endogenous peroxidase by 3% Hydrogen peroxide for 30min; Blocking buffer (normal goat serum,C-0005) at 37°C for 20 min;

Incubation: Anti-PRSS8 Polyclonal Antibody, Unconjugated(SL6064R) 1:200, overnight at 4°C, followed by conjugation to the secondary antibody(SP-0023) and DAB(C-0010) staining



Tissue/cell: human lung carcinoma; 4% Paraformaldehyde-fixed and paraffin-embedded;

Antigen retrieval: citrate buffer (1M, pH 6.0), Boiling bathing for 15min; Block endogenous peroxidase by 3% Hydrogen peroxide for 30min; Blocking buffer (normal goat serum,C-0005) at 37°C for 20 min;

Incubation: Anti-PRSS8 Polyclonal Antibody, Unconjugated(SL6064R) 1:200, overnight at 4°C, followed by conjugation to the secondary antibody(SP-0023) and DAB(C-0010) staining