

## Rabbit Anti-IGFBP9 antibody

SL6059R

|                                     |  |
|-------------------------------------|--|
| <b>Product Name</b>                 | IGFBP9   |
| <b>Chinese Name</b>                 | 胰岛素样生长因子 Binding protein9 抗体   |
| <b>Alias</b>                        | CCN family member 3; IBP-9; IGF-binding protein 9; IGFBP-9; IGFBP9; Insulin-like growth factor-binding protein 9; Nephroblastoma overexpressed gene protein homolog; Nephroblastoma-overexpressed gene protein homolog; NOV; NOV_HUMAN; NovH; Protein NOV homolog. |
| <b>Research Area</b>                | Cardiovascular immunology Growth factors and hormones Diabetes Endocrinopathy  |
| <b>Immunogen Species</b>            | Rabbit   |
| <b>Clonality</b>                    | Polyclonal   |
| <b>React Species</b>                | Human,Mouse,Rat  |
| <b>Applications</b>                 | WB=1:500-2000 (Paraffin sections need antigen repair)<br>not yet tested in other applications.<br>optimal dilutions/concentrations should be determined by the end user.   |
| <b>Theoretical molecular weight</b> | 35kDa  |
| <b>Cellular localization</b>        | Secretory protein  |
| <b>Form</b>                         | Liquid   |
| <b>Concentration</b>                | 1mg/ml   |
| <b>immunogen</b>                    | KLH conjugated synthetic peptide derived from human IGFBP9/CCN3: 221-320/357   |
| <b>Lsotype</b>                      | IgG  |
| <b>Purification</b>                 | affinity purified by Protein A   |
| <b>Buffer Solution</b>              | 1M TBS(pH7.4) with 1% BSA, 3% Proclin300 and 50% Glycerol.   |
| <b>Storage</b>                      | Shipped at 4°C. Store at -20 °C for one year. Avoid repeated freeze/thaw cycles.   |
| <b>Attention</b>                    | This product as supplied is intended for research use only, not for use in human, therapeutic or diagnostic applications.  |
| <b>PubMed</b>                       | <a href="#">PubMed</a>   |

---

Immediate-early protein likely to play a role in cell growth regulation.1400RWJ

**Function:**

Immediate-early protein likely to play a role in cell growth regulation (By similarity).

**Subunit:**

Interacts with FBLN1.

**Subcellular Location:**

Secreted.

**Tissue Specificity:**

Expressed in bone marrow, thymic cells andvneuroblastoma. Increased expression in Wilms tumor of the stromal type.

**Similarity:**

Belongs to the CCN family.

Contains 1 CTCK (C-terminal cystine knot-like) domain.

Contains 1 IGFBP N-terminal domain.

Contains 1 TSP type-1 domain.

Contains 1 VWFC domain.

**Product Detail**

**SWISS:**

P48745

**Gene ID:**

4856

**Database links:**

[Entrez Gene: 4856](#) Human

[Entrez Gene: 18133](#) Mouse

[Entrez Gene: 81526](#) Rat

[Omim: 164958](#) Human

[SwissProt: P48745](#) Human

[SwissProt: Q64299](#) Mouse

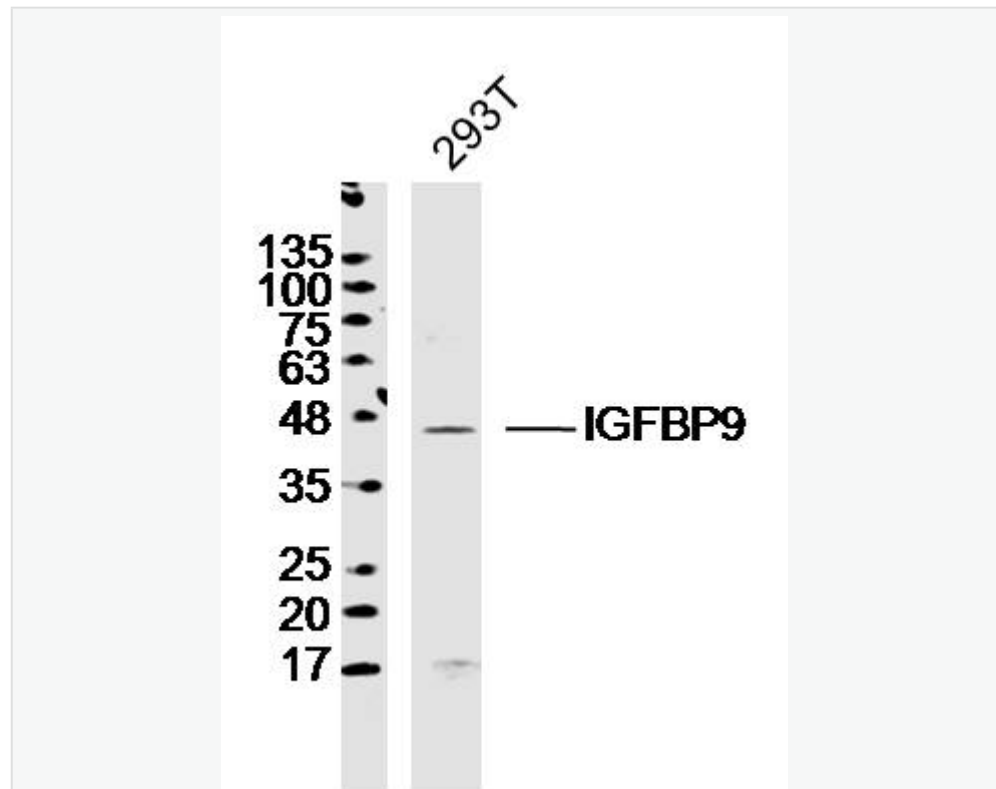
[SwissProt: Q9QZQ5](#) Rat

[Unigene: 235935](#) Human

[Unigene: 5167](#) Mouse

[Unigene: 162955](#) Rat

**Product Picture**



Sample:

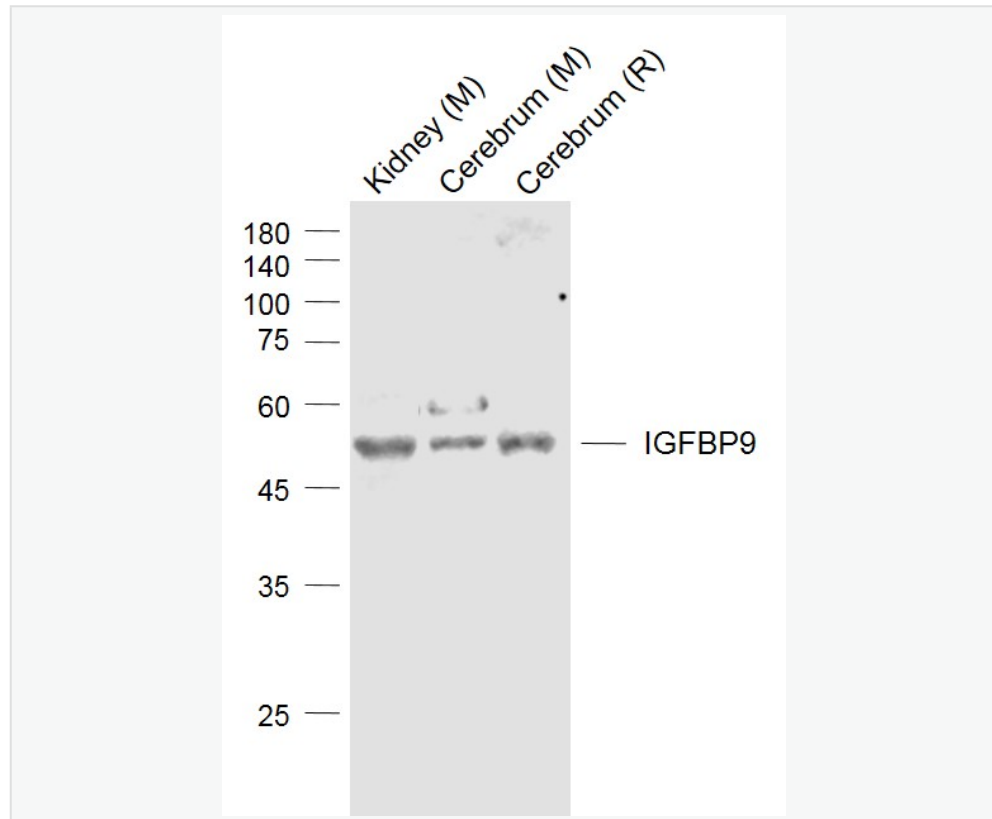
293T Cell (Human) Lysate at 30 ug

Primary: Anti- IGFBP9 (SL6059R)at 1/300 dilution

Secondary: IRDye800CW Goat Anti-Rabbit IgG at 1/20000 dilution

Predicted band size: 35kD

Observed band size: 45kD



Sample:

Lane 1: Kidney (Mouse) Lysate at 40 ug

Lane 2: Cerebrum (Mouse) Lysate at 40 ug

Lane 3: Cerebrum (Rat) Lysate at 40 ug

Primary: Anti-IGFBP9 (SL6059R) at 1/1000 dilution

Secondary: IRDye800CW Goat Anti-Rabbit IgG at 1/20000 dilution

Predicted band size: 48 kD

Observed band size: 48 kD