

Rabbit Anti-METTL11A antibody

SL6057R

Product Name METTL11A

Chinese Name 甲基化样蛋白 11 抗体 (N 端)

Alias Methyltransferase like 11A; Methyltransferase-like protein 11A; Mettl11a; N-terminal RCC1 methyltransferase; NRMT; NTM1A; NTM1A_HUMAN; NTMT1; X-Pro-Lys N-terminal protein methyltransferase 1A; AD 003; Alpha N-terminal protein methyltransferase 1A; C9orf32; Chromosome 9 open reading frame 32.

Research Area Cell biology immunology Cyclin Cell differentiation

Immunogen Species Rabbit

Clonality Polyclonal

React Species Mouse,Rat(predicted:Human,Chicken,Dog,Pig,Cow,Horse)

Applications IHC-P=1:100-500,IHC-F=1:100-500,IF=1:100-500 (Paraffin sections need antigen repair)
not yet tested in other applications.
optimal dilutions/concentrations should be determined by the end user.

Theoretical molecular weight 25kDa

Cellular localization The nucleus

Form Liquid

Concentration 1mg/ml

immunogen KLH conjugated synthetic peptide derived from human METTL11A: 25-130/223

Lsotype IgG

Purification affinity purified by Protein A

Buffer Solution 1M TBS(pH7.4) with 1% BSA, 3% Proclin300 and 50% Glycerol.

Storage Shipped at 4°C. Store at -20 °C for one year. Avoid repeated freeze/thaw cycles.

Attention This product as supplied is intended for research use only, not for use in human, therapeutic or diagnostic applications.

PubMed

[PubMed](#)

Alpha-N-methyltransferase that methylates the N-terminus of target proteins containing the N-terminal motif [Ala/Pro/Ser]-Pro-Lys when the initiator Met is cleaved. Specifically catalyzes mono-, di- or tri-methylation of exposed alpha-amino group of Ala, Pro or Ser residue in the [Ala/Pro/Ser]-Pro-Lys motif. Mediates the N-terminal methylation of KLHL31, MYL2, MYL3, RB1, RCC1, RPL23A and SET. Required during mitosis for normal bipolar spindle formation and chromosome segregation.

Function:

Alpha-N-methyltransferase that methylates the N-terminus of target proteins containing the N-terminal motif [Ala/Pro/Ser]-Pro-Lys when the initiator Met is cleaved. Specifically catalyzes mono-, di- or tri-methylation of exposed alpha-amino group of Ala or Ser residue in the [Ala/Ser]-Pro-Lys motif and mono- or di-methylation of Pro in the Pro-Pro-Lys motif. Responsible for the N-terminal methylation of KLHL31, MYL2, MYL3, RB1, RCC1, RPL23A and SET. Required during mitosis for normal bipolar spindle formation and chromosome segregation via its action on RCC1.

Subcellular Location:

Nucleus. Note=Predominantly nuclear.

Similarity:

Belongs to the methyltransferase superfamily. NTM1 family.

**Product
Detail**

SWISS:

Q9BV86

Gene ID:

28989

Database links:

[Entrez Gene: 28989](#) Human

[Entrez Gene: 66617](#) Mouse

[Entrez Gene: 362103](#) Rat

[Omim: 613560](#) Human

[SwissProt: Q9BV86](#) Human

[SwissProt: Q8R2U4](#) Mouse

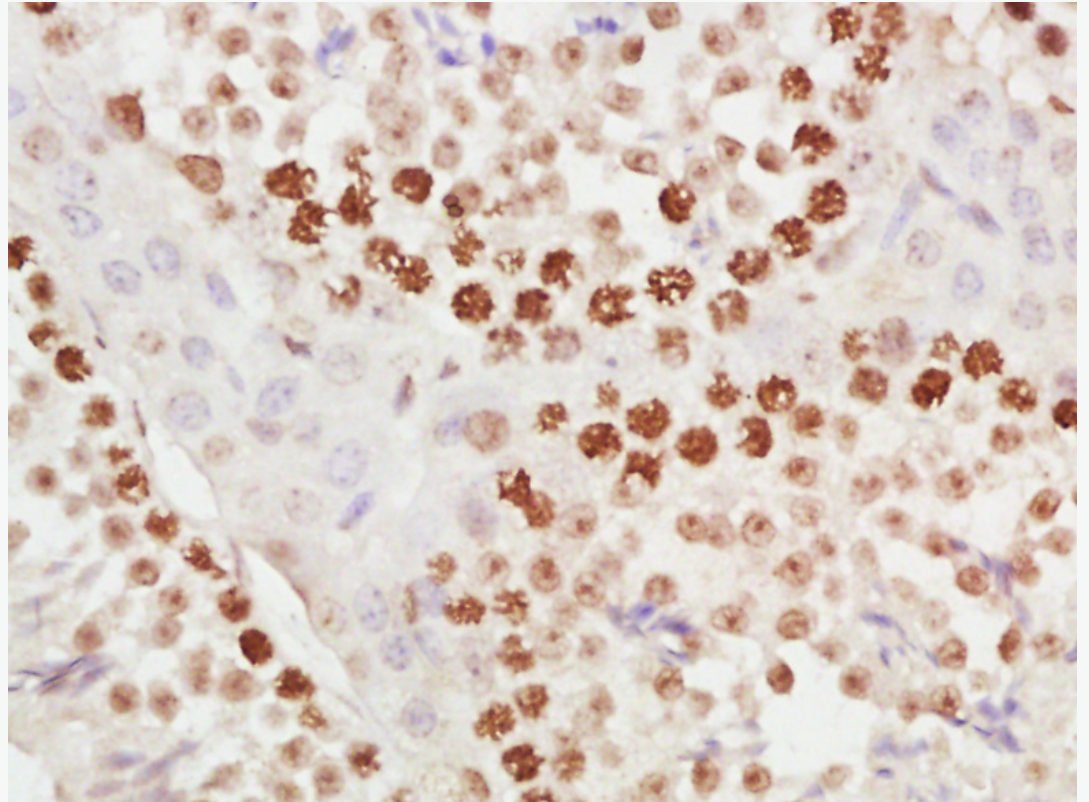
[SwissProt: Q5BJX0](#) Rat

[Unigene: 522433](#) Human

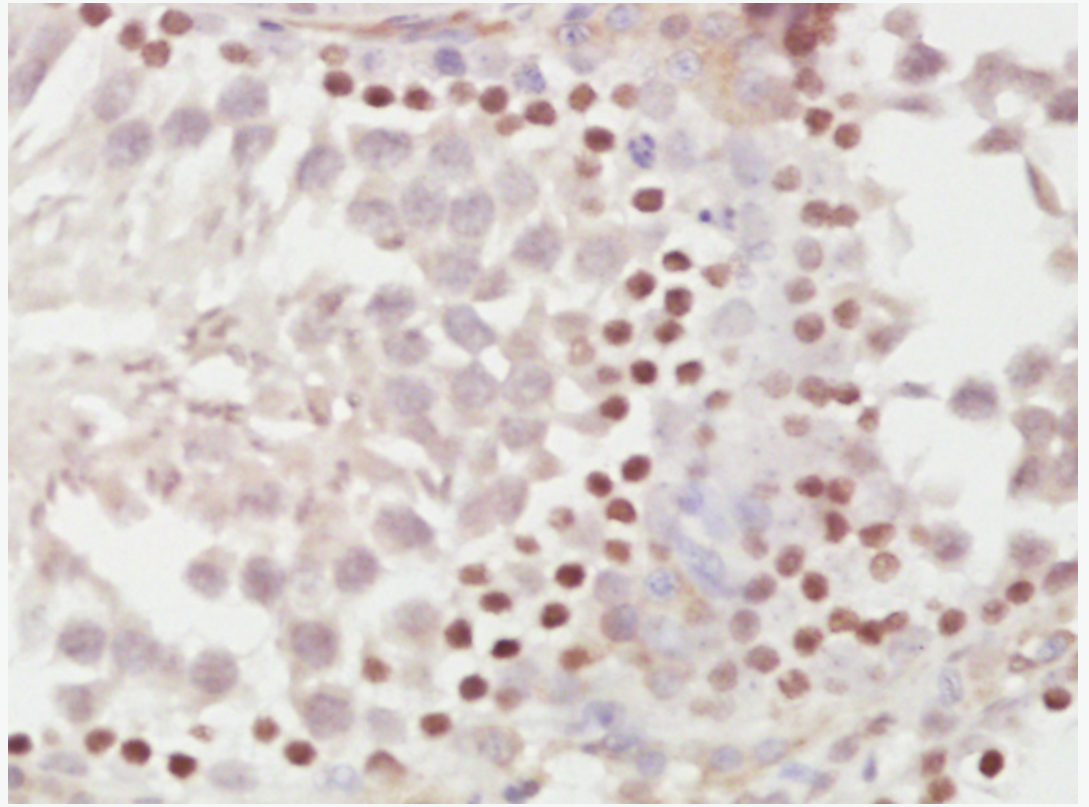
[Unigene: 33167](#) Mouse

[Unigene: 12306](#) Rat

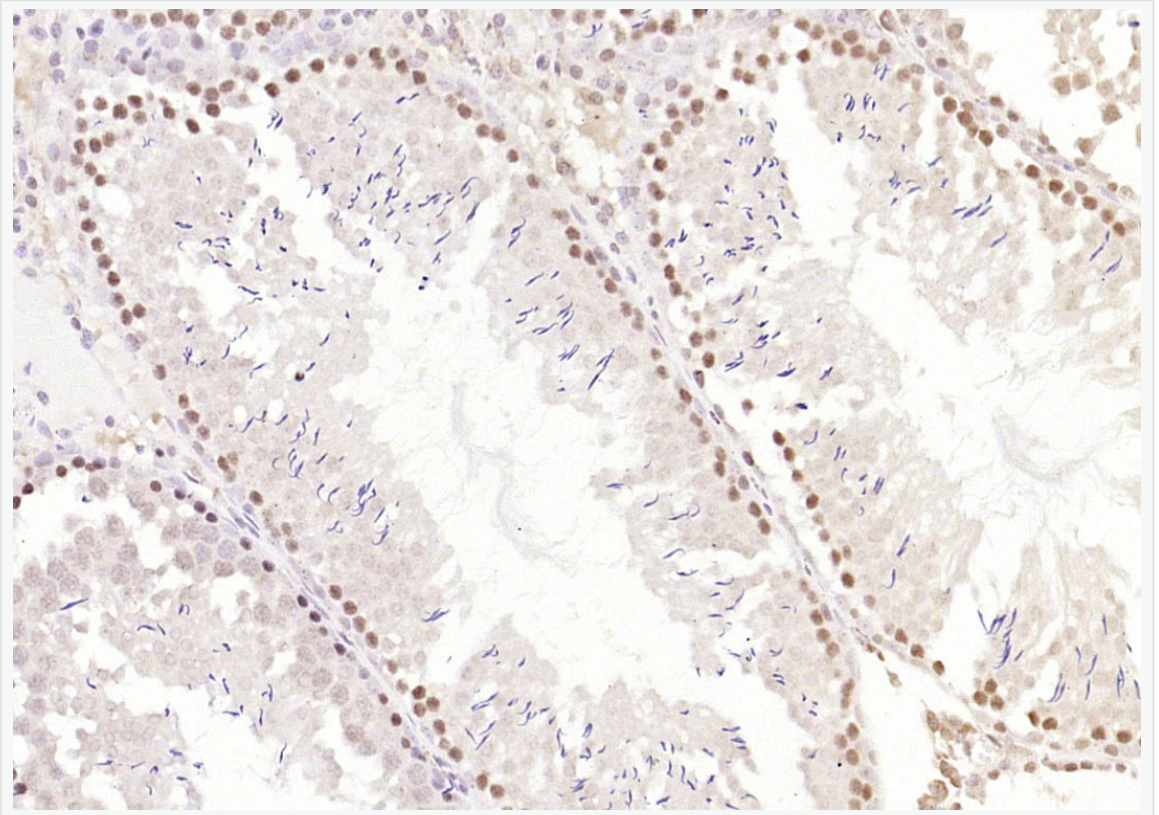
**Product
Picture**



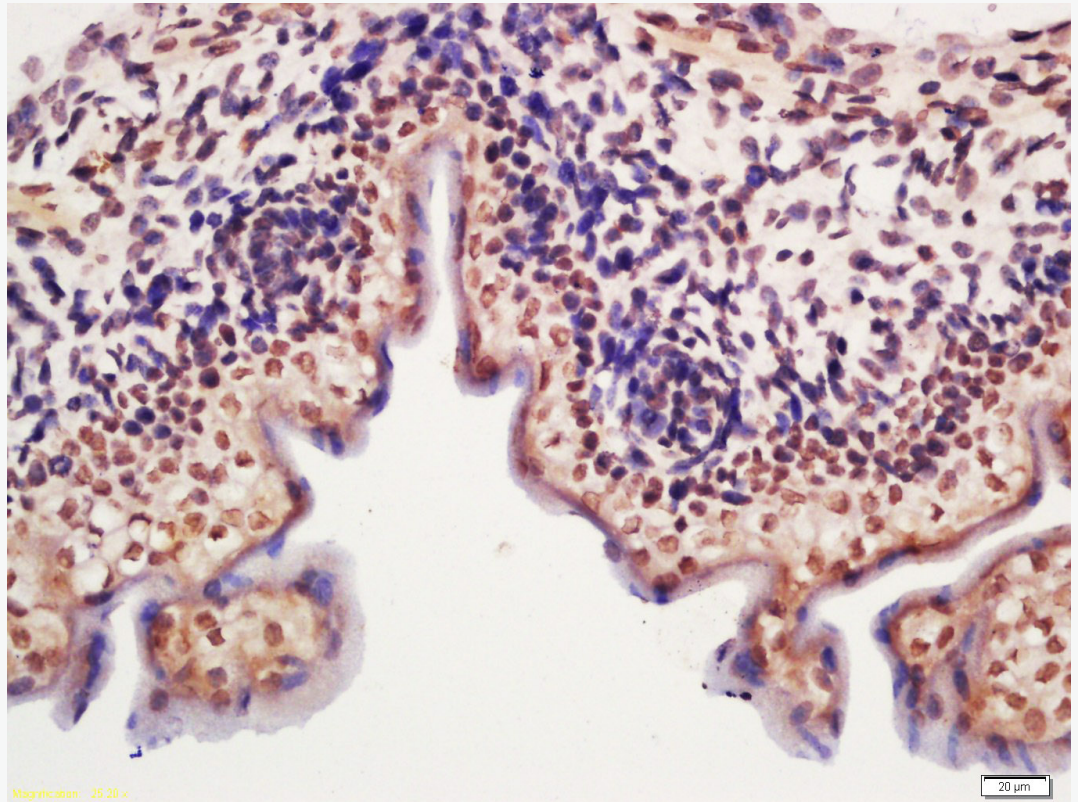
Paraformaldehyde-fixed, paraffin embedded (Mouse testis); Antigen retrieval by boiling in sodium citrate buffer (pH6.0) for 15min; Block endogenous peroxidase by 3% hydrogen peroxide for 20 minutes; Blocking buffer (normal goat serum) at 37°C for 30min; Antibody incubation with (METTL11A) Polyclonal Antibody, Unconjugated (SL6057R) at 1:400 overnight at 4°C, followed by operating according to SP Kit(Rabbit) (sp-0023) instructions and DAB staining.



Paraformaldehyde-fixed, paraffin embedded (Rat testis); Antigen retrieval by boiling in sodium citrate buffer (pH6.0) for 15min; Block endogenous peroxidase by 3% hydrogen peroxide for 20 minutes; Blocking buffer (normal goat serum) at 37°C for 30min; Antibody incubation with (METTL11A) Polyclonal Antibody, Unconjugated (SL6057R) at 1:400 overnight at 4°C, followed by operating according to SP Kit(Rabbit) (sp-0023) instructions and DAB staining.



Paraformaldehyde-fixed, paraffin embedded (rat testis); Antigen retrieval by boiling in sodium citrate buffer (pH6.0) for 30min; Block endogenous peroxidase by 3% hydrogen peroxide for 20 minutes; Blocking buffer (normal goat serum) at 37°C for 30min; Antibody incubation with (METTL11A) Polyclonal Antibody, Unconjugated (SL6057R) at 1:200 overnight at 4°C, followed by operating according to SP Kit(Rabbit) (sp-0023) instructions and DAB staining.



Tissue/cell: mouse embryo tissue; 4% Paraformaldehyde-fixed and paraffin-embedded;
Antigen retrieval: citrate buffer (1M, pH 6.0), Boiling bathing for 15min; Block
endogenous peroxidase by 3% Hydrogen peroxide for 30min; Blocking buffer (normal
goat serum,C-0005) at 37°C for 20 min;

Incubation: Anti-METTL11A Polyclonal Antibody, Unconjugated(SL6057R) 1:200,
overnight at 4°C, followed by conjugation to the secondary antibody(SP-0023) and
DAB(C-0010) staining