

## Rabbit Anti-LRPAP1 antibody

SL6055R

<b>Product Name</b>	LRPAP1
<b>Chinese Name</b>	Lipoprotein 受体相关蛋白/低密度 Lipoprotein 相关蛋白的相关蛋白 1 抗体 A2MRAP; A2RAP; Alpha 2 macroglobulin receptor associated protein; Alpha 2 MRAP; HBP44; Lipoprotein receptor associated protein; Low density lipoprotein receptor related protein associated protein 1; Low density lipoprotein related protein associated protein 1 alpha 2 macroglobulin receptor associated protein; Low density lipoprotein related protein associated protein 1; LRPAP1; MRAP; RAP; AMRP_HUMAN.
<b>Alias</b>	
<b>Research Area</b>	Cardiovascular immunology Signal transduction
<b>Immunogen Species</b>	Rabbit
<b>Clonality</b>	Polyclonal
<b>React Species</b>	Human(predicted:Mouse,Rat,Pig) WB=1:500-2000
<b>Applications</b>	not yet tested in other applications. optimal dilutions/concentrations should be determined by the end user.
<b>Theoretical molecular weight</b>	38kDa
<b>Cellular localization</b>	cytoplasmic The cell membrane Extracellular matrix
<b>Form</b>	Liquid
<b>Concentration</b>	1mg/ml
<b>immunogen</b>	KLH conjugated synthetic peptide derived from human LRPAP1/MRAP: 131-330/357
<b>Lsotype</b>	IgG
<b>Purification</b>	affinity purified by Protein A
<b>Buffer Solution</b>	1M TBS(pH7.4) with 1% BSA, 3% Proclin300 and 50% Glycerol.
<b>Storage</b>	Shipped at 4°C. Store at -20 °C for one year. Avoid repeated freeze/thaw cycles.
<b>Attention</b>	This product as supplied is intended for research use only, not for use in human, therapeutic or diagnostic applications.

## PubMed

### [PubMed](#)

A2MRAP; A2RAP; Alpha 2 macroglobulin receptor associated protein; Alpha 2 MRAP; HBP44; Lipoprotein receptor associated protein; Low density lipoprotein receptor related protein associated protein 1; Low density lipoprotein related protein associated protein 1 alpha 2 macroglobulin receptor associated protein; Low density lipoprotein related protein associated protein 1; LRPAP1; MRAP; RAP.

#### **Function:**

Interacts with LRP1/alpha-2-macroglobulin receptor and glycoprotein 330.

#### **Subunit:**

Present on cell surface forming a complex with the alpha-2-macroglobulin receptor heavy and light chains. Binds LRP1B; binding is followed by internalization and degradation.

#### **Subcellular Location:**

Endoplasmic reticulum. Cytoplasm. Cell surface. Note=Intracellular and associated with cell surface receptors. Found in the endoplasmic reticulum.

#### **Post-translational modifications:**

N-glycosylated.

#### **DISEASE:**

Note=In complex with the alpha-2-MR or gp330, it may have some role in the pathogenesis of membrane glomerular nephritis.

#### **Similarity:**

Belongs to the alpha-2-MRAP family.

#### **SWISS:**

P30533

#### **Gene ID:**

4043

#### **Database links:**

[Entrez Gene: 4043](#) Human

[Entrez Gene: 16976](#) Mouse

[Entrez Gene: 116565](#) Rat

## Product Detail

[Omim: 104225](#) Human

[SwissProt: P30533](#) Human

[SwissProt: P55302](#) Mouse

[SwissProt: Q99068](#) Rat

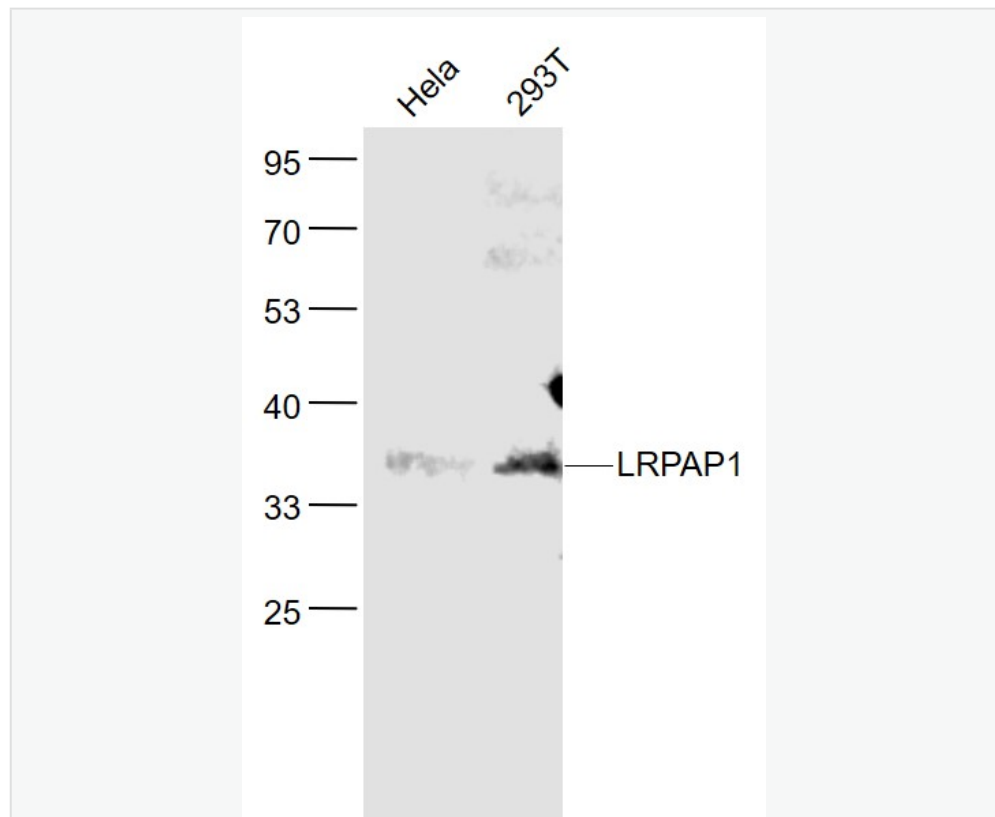
[Unigene: 40966](#) Human

[Unigene: 533136](#) Human

[Unigene: 277661](#) Mouse

[Unigene: 10293](#) Rat

**Product Picture**



Sample:

HeLa (Human) Cell Lysate at 30 ug

293T (Human) Cell Lysate at 30 ug



SunLong Biotech Co.,LTD

Tel: 0086-571-56623320 Fax:0086-571-56623318

E-mail:sales@sunlongbiotech.com

www.sunlongbiotech.com

Primary: Anti- LRPAP1 (SL6055R) at 1/1000 dilution

Secondary: IRDye800CW Goat Anti-Rabbit IgG at 1/20000 dilution

Predicted band size: 38 kD

Observed band size: 38 kD