

Rabbit Anti-FSTL1 antibody

SL6050R

Product Name	FSTL1
Chinese Name	卵泡抑素相关蛋白 1 抗体
Alias	FSTL1; TSC-36; Follistatin like 1; Follistatin related protein; Follistatin-like protein 1; Follistatin-related protein 1; FRP; FSL1; FSTL1; FSTL1_HUMAN.
Research Area	Cardiovascular Cell biology Cyclin
Immunogen Species	Rabbit
Clonality	Polyclonal
React Species	Human(predicted:Mouse,Rat,Chicken,Dog,Cow,Horse,Rabbit)
Applications	WB=1:500-2000 (Paraffin sections need antigen repair) not yet tested in other applications. optimal dilutions/concentrations should be determined by the end user.
Theoretical molecular weight	34kDa
Cellular localization	Secretory protein
Form	Liquid
Concentration	1mg/ml
immunogen	KLH conjugated synthetic peptide derived from human FSTL1/FRP: 201-308/308
Lsotype	IgG
Purification	affinity purified by Protein A
Buffer Solution	1M TBS(pH7.4) with 1% BSA, 3% Proclin300 and 50% Glycerol.
Storage	Shipped at 4°C. Store at -20 °C for one year. Avoid repeated freeze/thaw cycles.
Attention	This product as supplied is intended for research use only, not for use in human, therapeutic or diagnostic applications.
PubMed	PubMed
Product Detail	TSC-36 is a secreted extracellular glycoprotein. The amino acid sequence of TSC-36 is similar to follistatin, an inhibitor of activin, as it contains a follistatin module. TSC-36 is a heparin-binding protein suggested to have a

role in the negative regulation of cellular growth, as its expression is induced in response to TGF- β 1. In addition, TSC-36 is not found in small cell lung cancer (SCLC) cells, a highly aggressive neoplasm, but is detected in some non-small cell lung cancer (NSCLC) cells, a moderately aggressive neoplasm.. May modulate the action of some growth factors on cell proliferation and differentiation. Binds heparin.

Function:

May modulate the action of some growth factors on cell proliferation and differentiation. Binds heparin.

Subunit:

Interacts with SCN10A.

Subcellular Location:

Secreted.

Tissue Specificity:

Overexpressed in synovial tissues from rheumatoid arthritis.

Similarity:

Contains 2 EF-hand domains.

Contains 1 follistatin-like domain.

Contains 1 Kazal-like domain.

Contains 1 VWFC domain.

SWISS:

Q12841

Gene ID:

534482

Database links:

[Entrez Gene: 534482](#) Cow

[Entrez Gene: 11167](#) Human

[Entrez Gene: 14314](#) Mouse

[Entrez Gene: 79210](#) Rat

[Omim: 605547](#) Human

[SwissProt: Q58D84](#) Cow

[SwissProt: Q12841](#) Human

[SwissProt: Q62356](#) Mouse

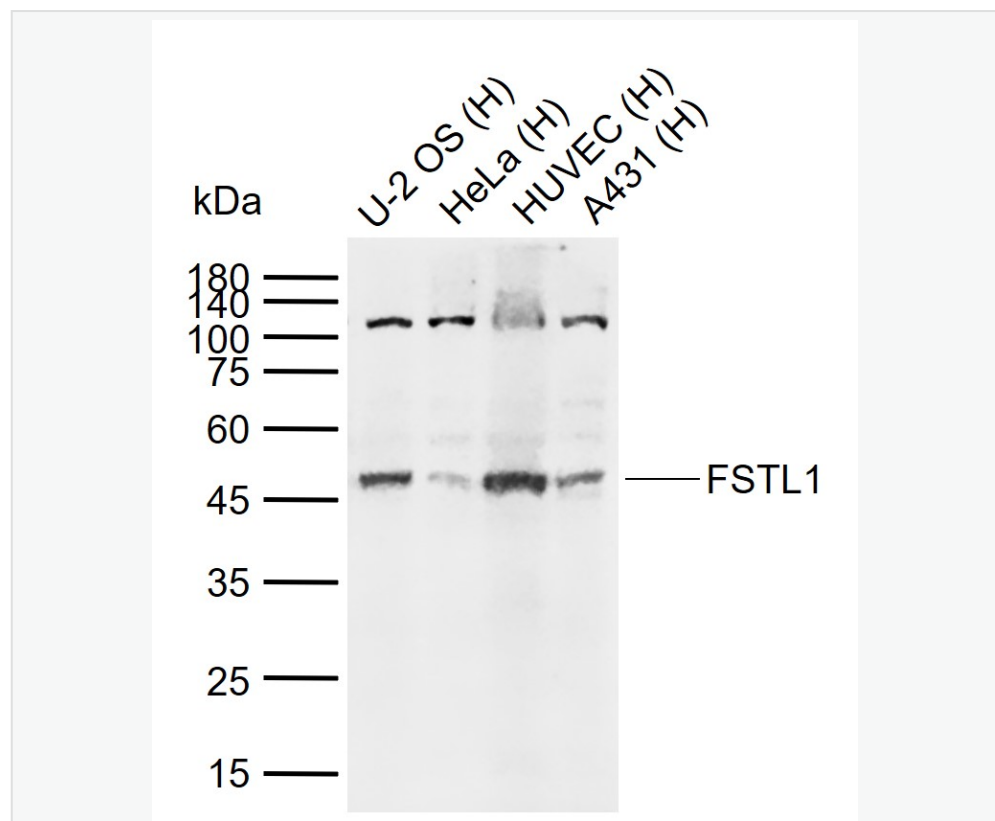
[SwissProt: Q62632](#) Rat

[Unigene: 269512](#) Human

[Unigene: 182434](#) Mouse

[Unigene: 95652](#) Rat

Product Picture



Sample:

Lane 1: Human U-2 OS cell lysates

Lane 2: Human HeLa cell lysates

Lane 3: Human HUVEC cell lysates

Lane 4: Human A431 cell lysates



SunLong Biotech Co.,LTD

Tel: 0086-571-56623320 Fax:0086-571-56623318

E-mail:sales@sunlongbiotech.com

www.sunlongbiotech.com

Primary: Anti-FSTL1 (SL6050R) at 1/1000 dilution

Secondary: IRDye800CW Goat Anti-Rabbit IgG at 1/20000 dilution

Predicted band size: 34 kDa

Observed band size: 47 kDa