

## Rabbit Anti-DLL4 antibody

SL6044R

**Product Name** DLL4

**Chinese Name**  $\delta$  样蛋白 4 抗体

**Alias** DeltaD; delta4; delta-like 4 (Drosophila); delta-like 4 homolog (Drosophila); Drosophila Delta homolog 4; delta-like 4 homolog; delta-like 4 protein; Aei; After eight; dld; DLL4\_HUMAN; Delta-like protein 4; Drosophila Delta homolog 4; Delta 4 precursor; delta 4; delta ligand 4; notch ligand delta-2; hdelta2; MGC126344; notch ligand DLL4.

**Research Area** Cell biology immunology Neurobiology Cyclin The cell membrane 受体

**Immunogen Species** Rabbit

**Clonality** Polyclonal

**React Species** Human, Mouse, (predicted: Rat, Dog, Pig, Cow, Horse, )  
WB=1:500-2000 (Paraffin sections need antigen repair)

**Applications** not yet tested in other applications.  
optimal dilutions/concentrations should be determined by the end user.

**Theoretical molecular weight** 72kDa

**Cellular localization** The cell membrane

**Form** Liquid

**Concentration** 1mg/ml

**immunogen** KLH conjugated synthetic peptide derived from human DLL4: 551-650/685

**Lsotype** IgG

**Purification** affinity purified by Protein A

**Buffer Solution** 1M TBS(pH7.4) with 1% BSA, 3% Proclin300 and 50% Glycerol.

**Storage** Shipped at 4°C. Store at -20 °C for one year. Avoid repeated freeze/thaw cycles.

**Attention** This product as supplied is intended for research use only, not for use in human, therapeutic or diagnostic applications.

**PubMed**

[PubMed](#)

The LIN-12/Notch family of transmembrane receptors is believed to play a central role in development by regulating cell fate decisions. Notch proteins have been found to be overexpressed or rearranged in human tumors. Ligands for Notch include Jagged, Jagged-2 and Delta. While blocking the differentiation of progenitor cells into the B-cell lineage, Delta promotes the emergence of a population of cells with T cell/NK-cell characteristics. The protein is a membrane protein expressed in heart, pancreas, brain and muscle during gastrulation and early organogenesis and in adult heart and lung. Delta-4 is a membrane protein that activates Notch-1 and Notch-4. It is expressed in a wide range of adult and fetal tissues, especially in vascular endothelium.

**Function:**

Plays a role in the Notch signaling pathway. Activates Notch-1 and Notch-4.

**Subunit:**

Binds to Notch-1 and Notch-4 (By similarity).

**Subcellular Location:**

Membrane; Single-pass type I membrane protein (Probable).

**Tissue Specificity:**

Expressed in vascular endothelium.

**Post-translational modifications:**

Ubiquitinated by MIB (MIB1 or MIB2), leading to its endocytosis and subsequent degradation.

**Similarity:**

Contains 1 DSL domain.

Contains 8 EGF-like domains.

**SWISS:**

Q9NR61

**Gene ID:**

54567

**Database links:**

[Entrez Gene: 54567](#) Human

[Entrez Gene: 54485](#) Mouse

[Omim: 605185](#) Human

**Product  
Detail**

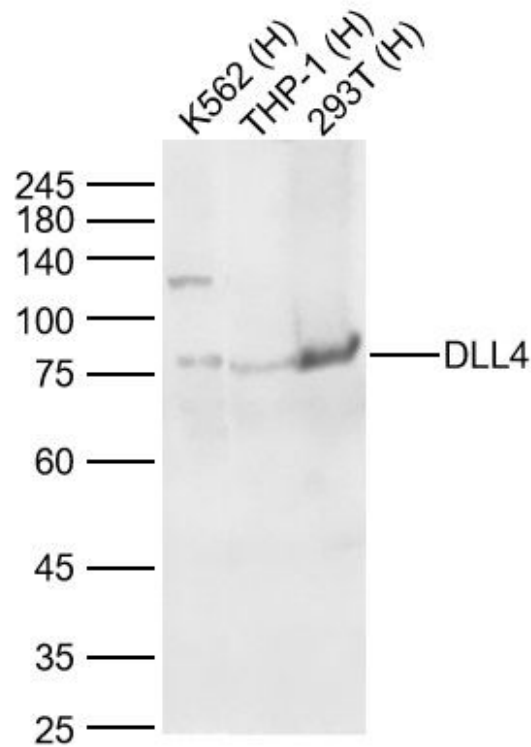
[SwissProt: Q9NR61](#) Human

[SwissProt: Q9JI71](#) Mouse

[Unigene: 511076](#) Human

[Unigene: 143719](#) Mouse

**Product  
Picture**



Sample:

Lane 1: Human K562 cell Lysates

Lane 2: Human THP-1 cell Lysates

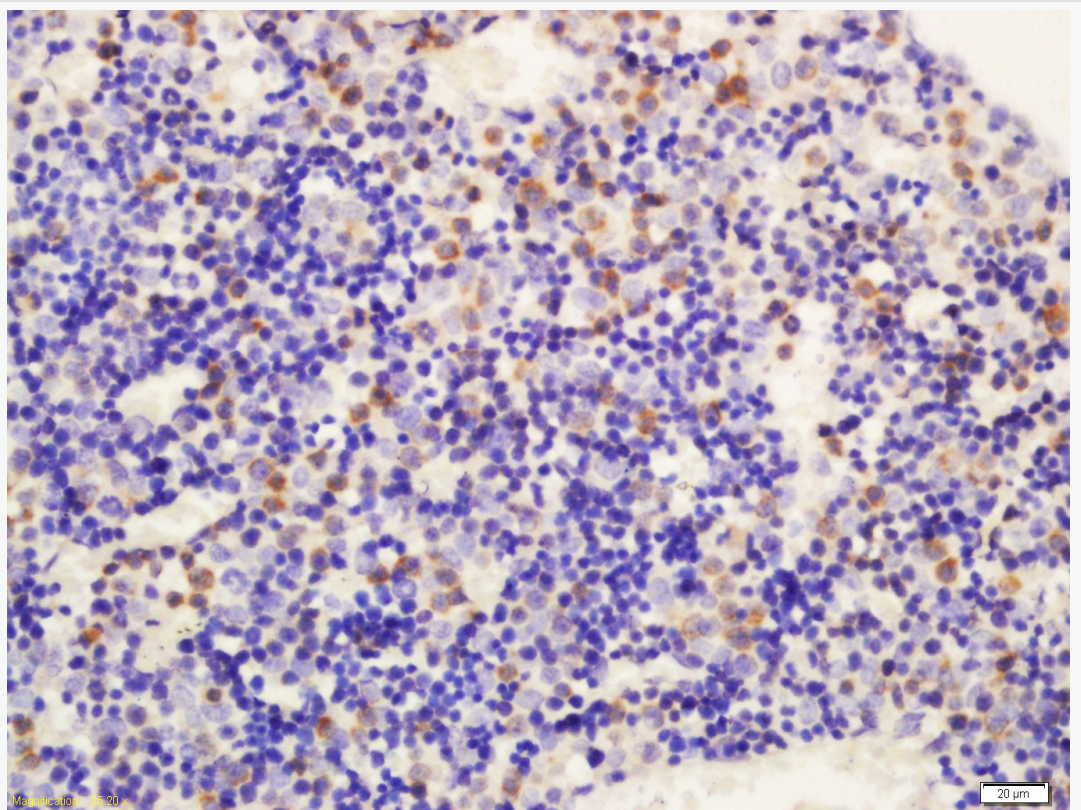
Lane 3: Human 293T cell Lysates

Primary: Anti-DLL4 (SL6044R) at 1/1000 dilution

Secondary: IRDye800CW Goat Anti-Rabbit IgG at 1/20000 dilution

Predicted band size: 75kDa

Observed band size: 75kDa



Tissue/cell: mouse embryo tissue; 4% Paraformaldehyde-fixed and paraffin-embedded;

Antigen retrieval: citrate buffer ( 1M, pH 6.0 ), Boiling bathing for 15min; Block endogenous peroxidase by 3% Hydrogen peroxide for 30min; Blocking buffer (normal goat serum,C-0005) at 37°C for 20 min;

Incubation: Anti-Delta 4 Polyclonal Antibody, Unconjugated(SL6044R) 1:200, overnight at 4°C, followed by conjugation to the secondary antibody(SP-0023)



SunLong Biotech Co.,LTD  
Tel: 0086-571-56623320 Fax:0086-571-56623318  
E-mail:sales@sunlongbiotech.com  
www.sunlongbiotech.com

and DAB(C-0010) staining