

Rabbit Anti-Carboxypeptidase A2 antibody

SL6035R

Product Name	Carboxypeptidase A2
Chinese Name	羧肽酶 A2 抗体
Alias	Carboxypeptidase A2; CPA 2; CPA-2; CBPA2_HUMAN; CPA2.
Research Area	Cell biology immunology Signal transduction
Immunogen Species	Rabbit
Clonality	Polyclonal
React Species	Mouse,Rat(predicted:Human,Dog,Rabbit) WB=1:500-2000 (Paraffin sections need antigen repair)
Applications	not yet tested in other applications. optimal dilutions/concentrations should be determined by the end user.
Theoretical molecular weight	34kDa
Cellular localization	Secretory protein
Form	Liquid
Concentration	1mg/ml
immunogen	KLH conjugated synthetic peptide derived from human CPA2/Carboxypeptidase A2: 245-350/419
Lsotype	IgG
Purification	affinity purified by Protein A
Buffer Solution	1M TBS(pH7.4) with 1% BSA, 3% Proclin300 and 50% Glycerol.
Storage	Shipped at 4°C. Store at -20 °C for one year. Avoid repeated freeze/thaw cycles.
Attention	This product as supplied is intended for research use only, not for use in human, therapeutic or diagnostic applications.
PubMed	PubMed
Product Detail	Carboxypeptidase A2 (CPA2) is one of three different isoforms of human pancreatic carboxypeptidase A. Carboxypeptidase A2 acts on aromatic C-terminal residues.

Subcellular Location:

Secreted.

Similarity:

Belongs to the peptidase M14 family.

SWISS:

P48052

Gene ID:

1358

Database links:

[Entrez Gene: 1358](#) Human

[Entrez Gene: 232680](#) Mouse

[Entrez Gene: 296959](#) Rat

[Omid: 600688](#) Human

[SwissProt: P48052](#) Human

[SwissProt: Q504N0](#) Mouse

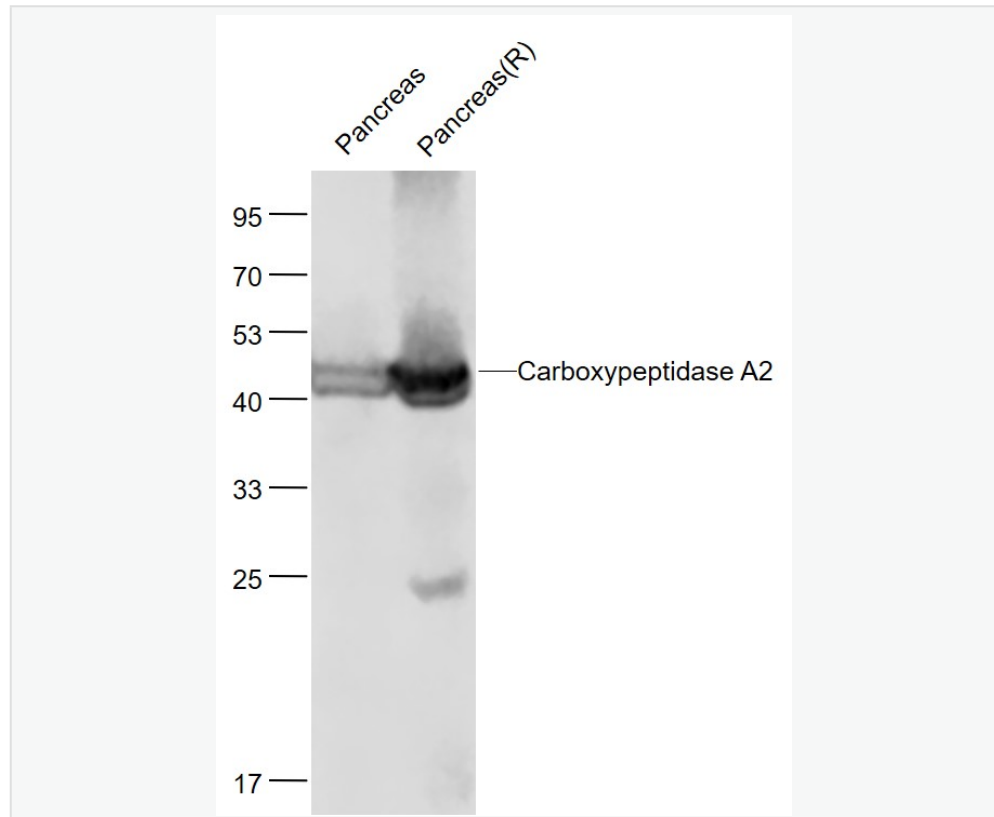
[SwissProt: P19222](#) Rat

[Unigene: 490038](#) Human

[Unigene: 268855](#) Mouse

[Unigene: 101694](#) Rat

Product Picture



Sample:

Pancreas(Mouse) Lysate at 40 ug

Pancreas(Rat) Lysate at 40 ug

Primary: Anti-Carboxypeptidase A2 (SL6035R) at 1/1000 dilution

Secondary: IRDye800CW Goat Anti-Rabbit IgG at 1/20000 dilution

Predicted band size: 47 kD

Observed band size: 47 kD