

## Rabbit Anti-CPA1 antibody

SL6034R

|                                     |   |
|-------------------------------------|---|
| <b>Product Name</b>                 | CPA1  |
| <b>Chinese Name</b>                 | 胰羧肽酶 A1 抗体  |
| <b>Alias</b>                        | Carboxypeptidase A1 precursor; CPA1; Pancreatic carboxypeptidase A1; Procarboxypeptidase A1 pancreatic; CBPA1_HUMAN.  |
| <b>Research Area</b>                | Tumour Cell biology immunology Signal transduction  |
| <b>Immunogen Species</b>            | Rabbit  |
| <b>Clonality</b>                    | Polyclonal  |
| <b>React Species</b>                | Human(predicted:Mouse,Rat,Chicken,Dog,Pig,Cow,Horse,Rabbit,GuineaPig)<br>WB=1:500-2000  |
| <b>Applications</b>                 | not yet tested in other applications.<br>optimal dilutions/concentrations should be determined by the end user.   |
| <b>Theoretical molecular weight</b> | 35kDa   |
| <b>Cellular localization</b>        | Secretory protein   |
| <b>Form</b>                         | Liquid  |
| <b>Concentration</b>                | 1mg/ml  |
| <b>immunogen</b>                    | KLH conjugated synthetic peptide derived from human Carboxypeptidase A:<br>201-300/419  |
| <b>Lsotype</b>                      | IgG   |
| <b>Purification</b>                 | affinity purified by Protein A  |
| <b>Buffer Solution</b>              | 1M TBS(pH7.4) with 1% BSA, 3% Proclin300 and 50% Glycerol.  |
| <b>Storage</b>                      | Shipped at 4°C. Store at -20 °C for one year. Avoid repeated freeze/thaw cycles.  |
| <b>Attention</b>                    | This product as supplied is intended for research use only, not for use in human, therapeutic or diagnostic applications.   |
| <b>PubMed</b>                       | <a href="#">PubMed</a>  |
| <b>Product Detail</b>               | Three different forms of human pancreatic procarboxypeptidase A have been isolated. This gene encodes a monomeric pancreatic exopeptidase involved in zymogen inhibition. [provided by RefSeq, Jan 2009]. |

**Function:**

Carboxypeptidase that catalyzes the release of a C-terminal amino acid, but has little or no action with -Asp, -Glu, -Arg, -Lys or -Pro.

**Subunit:**

Monomer. May form a complex with proelastase 2.

**Subcellular Location:**

Secreted.

**Similarity:**

Belongs to the peptidase M14 family.

**SWISS:**

P15085

**Gene ID:**

1357

**Database links:**

[Entrez Gene: 1357](#) Human

[Entrez Gene: 109697](#) Mouse

[Entrez Gene: 24269](#) Rat

[Omim: 114850](#) Human

[SwissProt: P15085](#) Human

[SwissProt: Q7TPZ8](#) Mouse

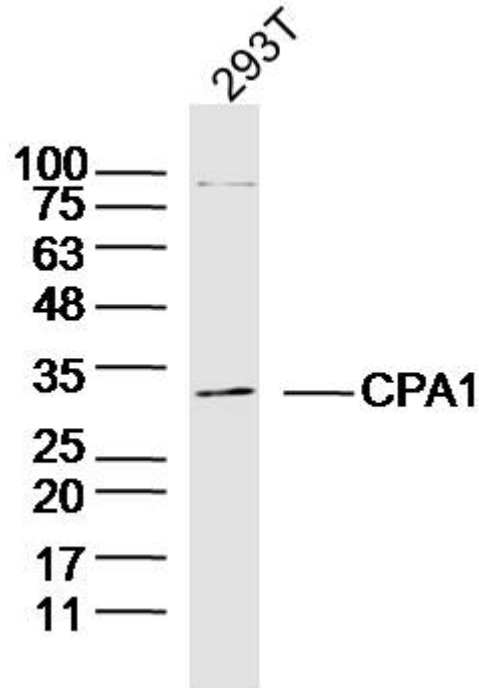
[SwissProt: P00731](#) Rat

[Unigene: 2879](#) Human

[Unigene: 25377](#) Mouse

[Unigene: 9576](#) Rat

**Product Picture**



Sample: 293T Cell (Human) Lysate at 40 ug

Primary: Anti-CPA1 (SL6034R) at 1/300 dilution

Secondary: IRDye800CW Goat Anti-Rabbit IgG at 1/20000 dilution

Predicted band size: 35 kD

Observed band size: 34 kD