

Rabbit Anti-CADM3 antibody

SL6027R

Product Name	CADM3
Chinese Name	Cell adhesion molecule3 抗体
Alias	Brain immunoglobulin receptor; Synaptic cell adhesion molecule 3; Necl 1; synCAM3; CADM 3; Cell adhesion molecule 3; FLJ10698; IGSF4B; Immunoglobulin superfamily member 4B; NECL1; Nectin like protein 1; TSLC1 like protein 1; TSLL1; CADM3_HUMAN.
Research Area	Neurobiology Cell adhesion molecule Cell Surface Molecule
Immunogen Species	Rabbit
Clonality	Polyclonal
React Species	Human,Mouse,Rat(predicted:Dog,Pig,Cow,Horse,Rabbit) WB=1:500-2000 (Paraffin sections need antigen repair)
Applications	not yet tested in other applications. optimal dilutions/concentrations should be determined by the end user.
Theoretical molecular weight	41kDa
Cellular localization	cytoplasmic The cell membrane
Form	Liquid
Concentration	1mg/ml
immunogen	KLH conjugated synthetic peptide derived from human CADM3: 101-200/398 <Extracellular>
Lsotype	IgG
Purification	affinity purified by Protein A
Buffer Solution	1M TBS(pH7.4) with 1% BSA, 3% Proclin300 and 50% Glycerol.
Storage	Shipped at 4°C. Store at -20 °C for one year. Avoid repeated freeze/thaw cycles.
Attention	This product as supplied is intended for research use only, not for use in human, therapeutic or diagnostic applications.
PubMed	PubMed
Product Detail	Immunoglobulin superfamily member 4B (Cell adhesion molecule 3,

Nectin-like protein 1) is a nectin family gene product that contains 2 Ig-like C2-type (immunoglobulin-like) domains and an Ig-like V-type (immunoglobulin-like) domain. IGSF4B is a single-pass type I membrane protein that localizes to cell-cell interacting sites along the plasma membrane. IGSF4B functions as a cell adhesion molecule at cell-cell junctions. IGSF4B can be found as a homodimer and has a dual calcium-independent adhesion function; a homophilic cell-cell interaction and a heterophilic cell-cell interaction involving IGSF4, Nectin 1 and Nectin 3. IGSF4B may also interact with EPB41L1 which has a potential for regulating structure or function of cell-cell junctions. By similarity, Isoform 1 is expressed in adult and fetal brain. Isoform 2 is highly expressed in the cerebellum but is also weakly expressed in placenta. IGSF4B has been found to be markedly over-expressed in glioma cell lines and prostate cancer cell lines.

Function:

Involved in the cell-cell adhesion. Has both calcium-independent homophilic cell-cell adhesion activity and calcium-independent heterophilic cell-cell adhesion activity with IGSF4, PVRL1 and PVRL3. Interaction with EPB41L1 may regulate structure or function of cell-cell junctions.

Subunit:

Homodimer. Can form trans-heterodimers with PVRL3/nectin-3. Interacts with EPB41L1, DLG3, MPP6 and CASK.

Subcellular Location:

Cell junction. Cell membrane. Localized at the cell-cell attached sites of the plasma membrane.

Tissue Specificity:

Isoform 1 is expressed mainly in adult and fetal brain. Isoform 2 is highly expressed in adult brain and weakly expressed in placenta. In brain, Isoform 2 is highly expressed in cerebellum.

Similarity:

Belongs to the nectin family.

Contains 2 Ig-like C2-type (immunoglobulin-like) domains.

Contains 1 Ig-like V-type (immunoglobulin-like) domain.

SWISS:

Q8N126

Gene ID:

57863

Database links:

[Entrez Gene: 57863](#) Human

[Entrez Gene: 94332](#) Mouse

[Entrez Gene: 360882](#) Rat

[Omid: 609743](#) Human

[SwissProt: Q8N126](#) Human

[SwissProt: Q99N28](#) Mouse

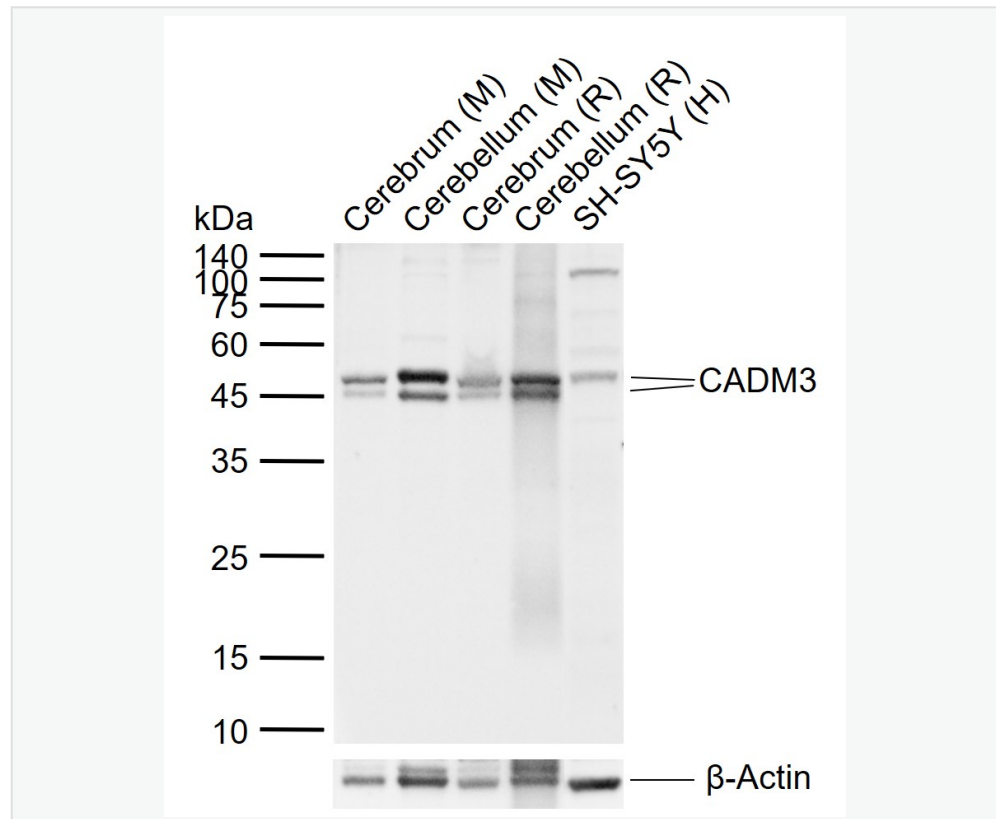
[SwissProt: Q1WIM3](#) Rat

[Unigene: 365689](#) Human

[Unigene: 330524](#) Mouse

[Unigene: 138884](#) Rat

Product Picture



Sample:

Lane 1: Mouse Cerebrum tissue lysates

Lane 2: Mouse Cerebellum tissue lysates

Lane 3: Rat Cerebrum tissue lysates

Lane 4: Rat Cerebellum tissue lysates

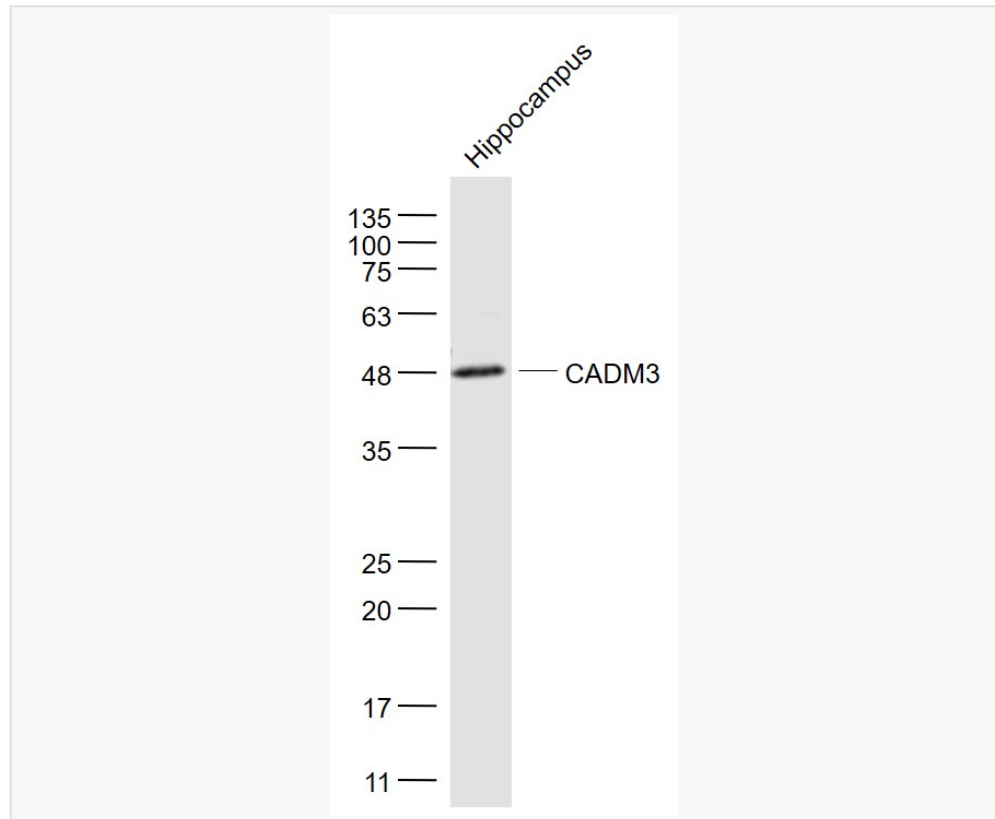
Lane 5: Human SH-SY5Y cell lysates

Primary: Anti-CADM3 (SL6027R) at 1/1000 dilution

Secondary: IRDye800CW Goat Anti-Rabbit IgG at 1/20000 dilution

Predicted band size: 41 kDa

Observed band size: 45,47 kDa



Sample:

Hippocampus (Mouse) Lysate at 40 ug

Primary: Anti- CADM3 (SL6027R) at 1/1000 dilution

Secondary: IRDye800CW Goat Anti-Rabbit IgG at 1/20000 dilution

Predicted band size: 41 kD

Observed band size: 48 kD