

Rabbit Anti-RHOC antibody

SL55187R

Product Name	[KO validated anti] RHOC
Chinese Name	RhoC 抗体
Alias	ARH 9; ARH9; ARHC; H9; MGC1448; MGC61427; Oncogene RHO H9; Ras homolog gene family member C; RAS related homolog 9; RHO C; Rho cDNA clone 9; Rho related GTP binding protein RhoC; Rho-related GTP-binding protein RhoC; rhoC; RhoC GTPase; RHOC_HUMAN; RHOH 9; RHOH9; Small GTP binding protein RhoC.
Research Area	Tumour
Immunogen Species	Rabbit
Clonality	Polyclonal
React Species	Human, Mouse, (predicted: Rat,) WB=1:500-2000,ELISA=1:5000-10000 (Paraffin sections need antigen repair)
Applications	not yet tested in other applications. optimal dilutions/concentrations should be determined by the end user.
Theoretical molecular weight	22kDa
Cellular localization	The cell membrane
Form	Liquid
Concentration immunogen	1mg/ml Recombinant human RHOC: 1-193/193
Lsotype	IgG
Purification	affinity purified by Protein A
Buffer Solution	1M TBS(pH7.4) with 1% BSA, 3% Proclin300 and 50% Glycerol.
Storage	Store at -20 °C for one year. Avoid repeated freeze/thaw cycles. The lyophilized antibody is stable at room temperature for at least one month and for greater than a year when kept at -20°C. When reconstituted in sterile pH 7.4 1M PBS or diluent of antibody the antibody is stable for at least two weeks at 2-4 °C.

Attention

This product as supplied is intended for research use only, not for use in human, therapeutic or diagnostic applications.

PubMed

[PubMed](#)

This gene encodes a member of the Rho family of small GTPases, which cycle between inactive GDP-bound and active GTP-bound states and function as molecular switches in signal transduction cascades. Rho proteins promote reorganization of the actin cytoskeleton and regulate cell shape, attachment, and motility. The protein encoded by this gene is prenylated at its C-terminus, and localizes to the cytoplasm and plasma membrane. It is thought to be important in cell locomotion. Overexpression of this gene is associated with tumor cell proliferation and metastasis. Multiple alternatively spliced variants, encoding the same protein, have been identified. [provided by RefSeq, Jul 2008]

Function:

Regulates a signal transduction pathway linking plasma membrane receptors to the assembly of focal adhesions and actin stress fibers.

Subunit:

Interacts with RTKN. Interacts with AKAP13, DIAPH1, PKN2, ROCK1 and ROCK2. Interacts with ARHGDI1A.

Product Detail

Subcellular Location:

Cell membrane; Lipid-anchor; Cytoplasmic side (Potential). Cleavage furrow. Note=Translocates to the equatorial region before furrow formation in a ECT2-dependent manner.

Similarity:

Belongs to the small GTPase superfamily. Rho family.

SWISS:

P08134

Gene ID:

389

Database links:

[Entrez Gene: 389](#) Human

[Entrez Gene: 295342](#) Rat

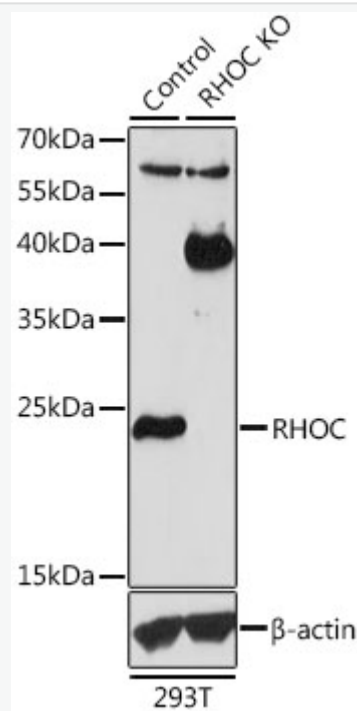
[Omim: 165380](#) Human

[SwissProt: P08134](#) Human

[Unigene: 502659](#) Human

[Unigene: 658289](#) Human

Product Picture



Sample:

Lane 1: 293T (Human) Cell Lysate at 25 ug

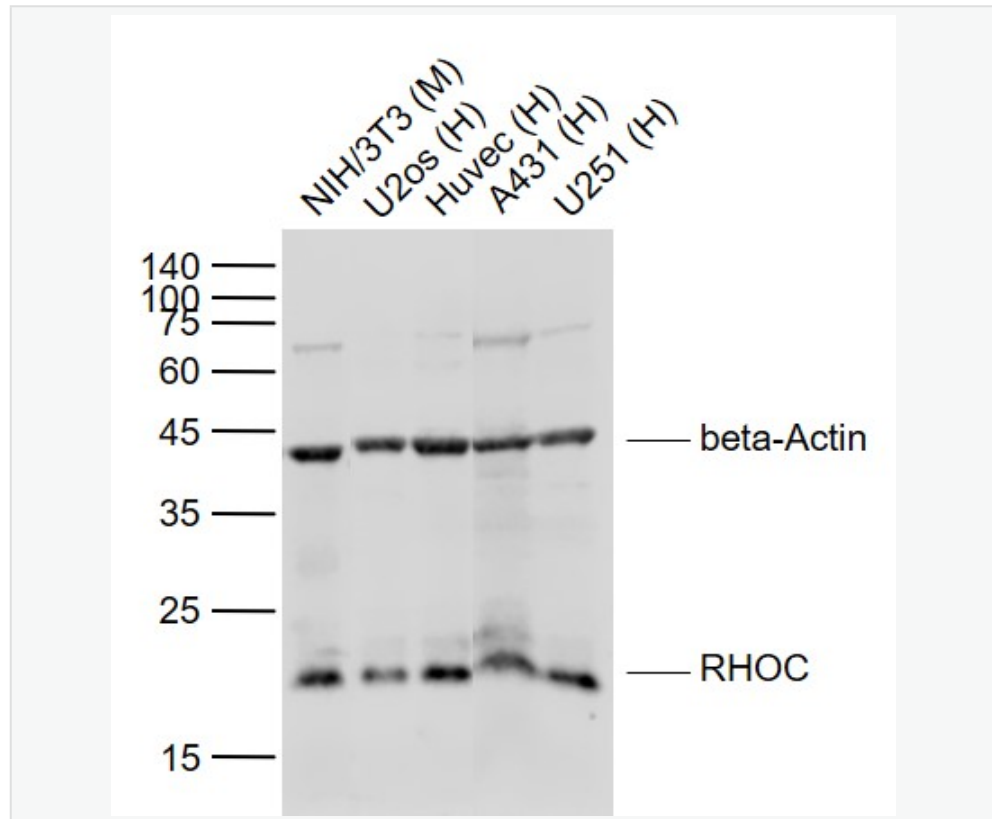
Lane 2: RHOC knockout (KO) 293T (Human) Cell Lysate at 25 ug

Primary: Anti-RHOC (SL55187R) at 1/1000 dilution

Secondary: HRP Goat Anti-Rabbit IgG (H+L) at 1:10000 dilution

Predicted band size: 22 kD

Observed band size: 22 kD



Sample:

Lane 1: NIH/3T3 (Mouse) Cell Lysate at 30 ug

Lane 2: U2os (Human) Cell Lysate at 30 ug

Lane 3: Huvec (Human) Cell Lysate at 30 ug

Lane 4: A431 (Human) Cell Lysate at 30 ug

Lane 5: U251 (Human) Cell Lysate at 30 ug

Primary:

Anti- RHOC (SL55187R) at 1/1000 dilution

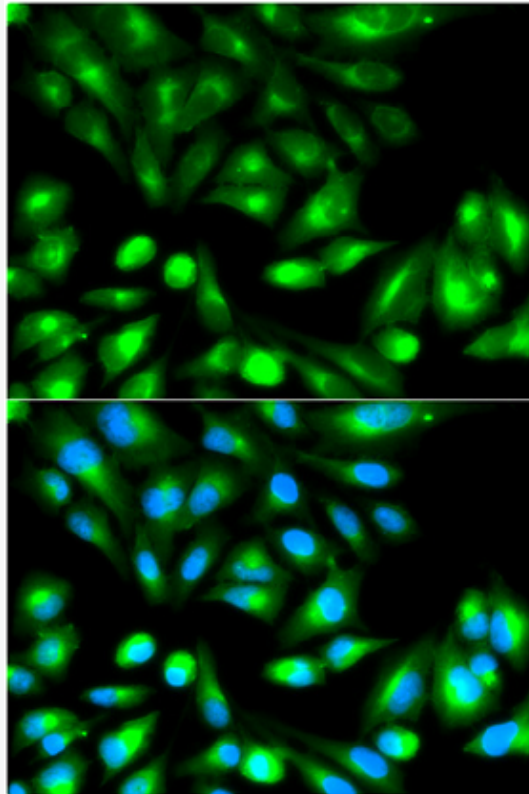
Anti-beta-Actin (SL0061R) at 1/2000 dilution

Secondary:

IRDye800CW Goat Anti-Rabbit IgG at 1/20000 dilution

Predicted band size: 22 kD

Observed band size: 22 kD



Hela cell; 4% Paraformaldehyde-fixed; Triton X-100 at room temperature for 20 min; Blocking buffer (normal goat serum, C-0005) at 37°C for 20 min; Antibody incubation with (KO Validated)RHOC polyclonal Antibody, Unconjugated (SL55187R) 1:100, 90 minutes at 37°C; followed by a conjugated Goat Anti-Rabbit IgG antibody at 37°C for 90 minutes, DAPI (blue, C02-04002) was used to stain the cell nuclei.



SunLong Biotech Co.,LTD
Tel: 0086-571-56623320 Fax:0086-571-56623318
E-mail:sales@sunlongbiotech.com
www.sunlongbiotech.com
