

## Rabbit Anti-MPXV A35R antibody

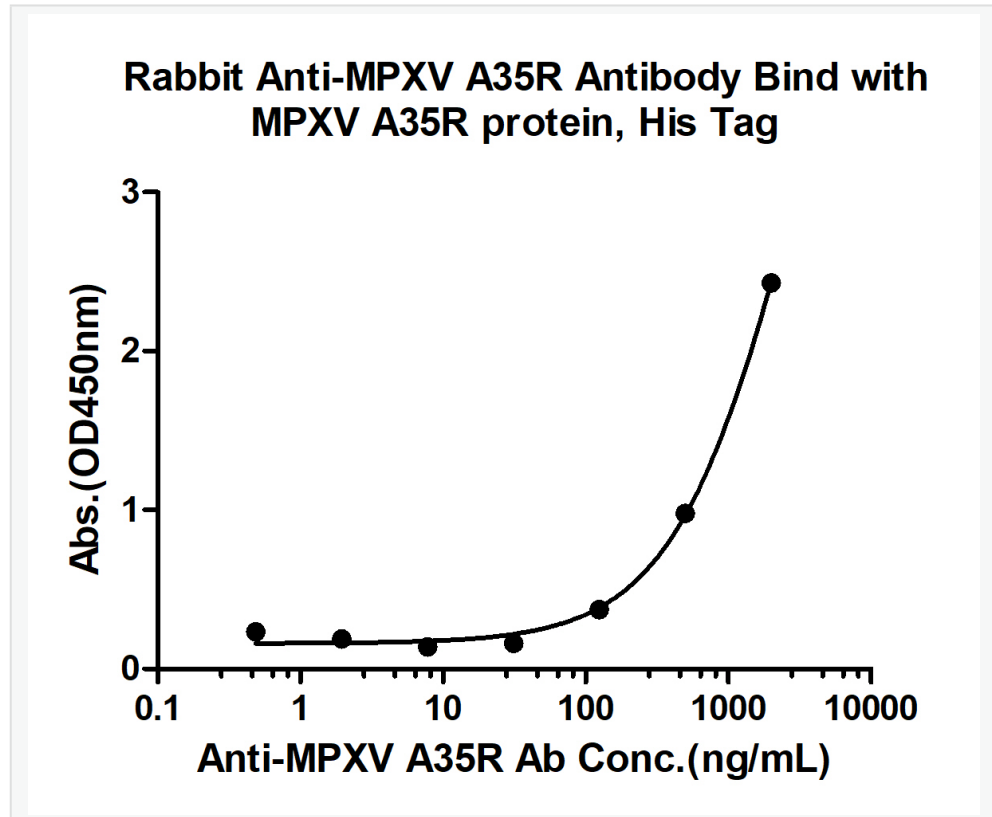
SL43539R

<b>Product Name</b>	MPXV A35R
<b>Chinese Name</b>	猴痘病毒 A35R 抗体
<b>Alias</b>	Bifunctional EEV membrane phosphoglycoprotein; Bifunctional EEV membrane phosphoglycoprotein/associates with A36R; Bifunctional EEV membrane protein; EEV membrane phosphoglycoprotein; EEV membrane phosphoglycoprotein C-type; EEV membrane phosphoglycoprotein, C-type lectin-like domain; MPXV-COP-139; MPXV-SL-139; MPXV-WRAIR139;Q80KX2_MONPV.
<b>Research Area</b>	Bacteria and viruses
<b>Immunogen Species</b>	Rabbit
<b>Clonality</b>	Polyclonal
<b>React Species</b>	(predicted:MPXV) ELISA=1:5000-10000
<b>Applications</b>	ELISA=1:5000-10000 not yet tested in other applications. optimal dilutions/concentrations should be determined by the end user.
<b>Theoretical molecular weight</b>	20kDa
<b>Form</b>	Liquid
<b>Concentration</b>	1mg/ml
<b>immunogen</b>	Recombinant MPXV A35R protein: 58-181/181
<b>Lsotype</b>	IgG
<b>Purification</b>	affinity purified by Protein A
<b>Buffer Solution</b>	(predicted:MPXV)1M TBS(pH7.4) with 1% BSA, (predicted:MPXV)3% Proclin300 and 50% Glycerol.
<b>Storage</b>	Shipped at 4°C. Store at -20 °C for one year. Avoid repeated freeze/thaw cycles
<b>Attention</b>	This product as supplied is intended for research use only, not for use in human, therapeutic or diagnostic applications.
<b>PubMed</b>	<a href="#">PubMed</a>
<b>Product Detail</b>	Monkeypox is a rare zoonosis caused by monkeypox virus, which has become

the most serious orthpoxvirus and consists of complex double stranded DNA. The cases are mostly in central and western Africa. The pathogenesis of monkeypox is that the virus invades the body from respiratory mucosa , multiplies in lymphocytes, and incurs into blood producing transient venereal toxemia. after the virus multiplies in cells, the cells can invade the blood and propagate to the skin of the whole body, causing lesions.

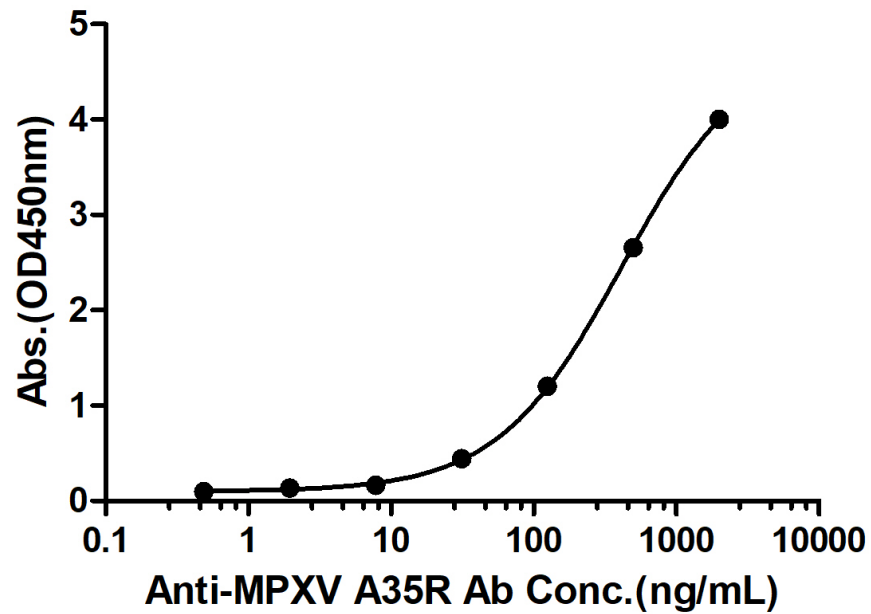
SWISS:  
Q80KX2

Product Picture



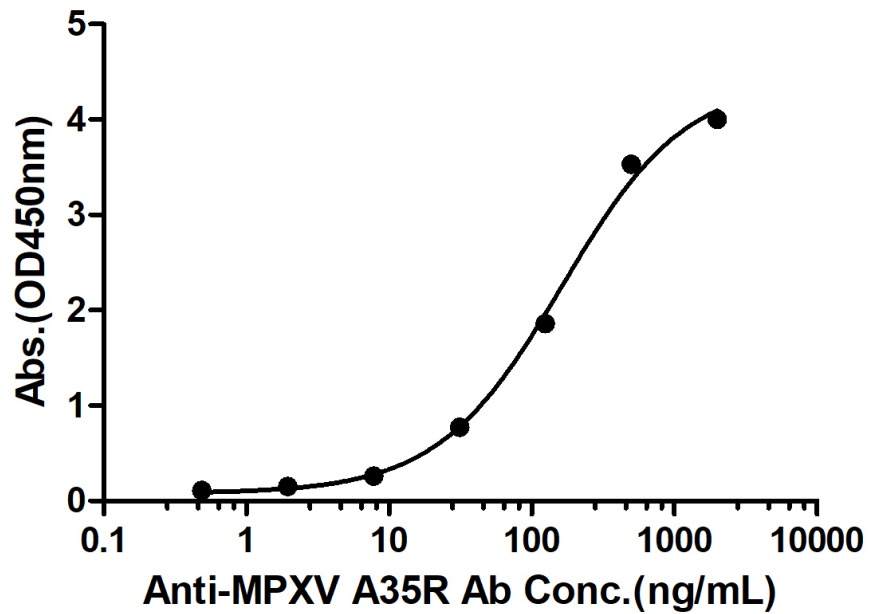
Measured by its binding ability in a indirect ELISA. Immobilized MPXV A35R protein, His Tag (Cat. SL43539P) at 2 µg/mL (100 µL/well) can bind Rabbit Anti-MPXV A35R Antibody, the EC50 is 3058 ng/mL.

### Rabbit Anti-MPXV A35R Antibody Bind with MPXV A35R protein, His Tag



Measured by its binding ability in a indirect ELISA. Immobilized MPXV A35R protein, His Tag (Cat. SL43539P) at 2  $\mu\text{g/mL}$  (100  $\mu\text{L/well}$ ) can bind Rabbit Anti-MPXV A35R Antibody, the EC<sub>50</sub> is 414.4 ng/mL.

### Rabbit Anti-MPXV A35R Antibody Bind with MPXV A35R protein, His Tag



Measured by its binding ability in a indirect ELISA. Immobilized MPXV A35R protein, His Tag (Cat. SL43539P) at 2  $\mu\text{g/mL}$  (100  $\mu\text{L/well}$ ) can bind Rabbit Anti-MPXV A35R Antibody, the EC50 is 163.3 ng/mL.