

Rabbit Anti-AMH antibody

SL43520R

Product Name	AMH
Chinese Name	Muellerian 缪勒管激素抑制因子抗体
Alias	MIS_HUMAN; Anti muellerian hormone; MIF; MIS; Muellerian inhibiting factor; Mullerian inhibiting substance; Muellerian-inhibiting factor; Anti-Muellerian hormone; AMH; Muellerian-inhibiting substance.
Research Area	Tumour Cell biology Developmental biology Signal transduction Stem cells Growth factors and hormones transcriptional regulatory factor
Immunogen Species	Rabbit
Clonality	Polyclonal
React Species	Human, WB=1:500-2000
Applications	not yet tested in other applications. optimal dilutions/concentrations should be determined by the end user.
Theoretical molecular weight	57kDa
Cellular localization	Secretory protein
Form	Lyophilized or Liquid
Concentration	1mg/ml
immunogen	Recombinant human AMH protein: 25-450/560
Lsotype	IgG
Purification	affinity purified by Protein A
Buffer Solution	1M TBS(pH7.4) with 1% BSA, 3% Proclin300 and 50% Glycerol.
Storage	Shipped at 4°C. Store at -20 °C for one year. Avoid repeated freeze/thaw cycles.
Attention	This product as supplied is intended for research use only, not for use in human, therapeutic or diagnostic applications.
PubMed	PubMed
Product Detail	Anti-Mullerian hormone is a member of the transforming growth factor-beta gene family which mediates male sexual differentiation. Anti-Mullerian

hormone causes the regression of Mullerian ducts which would otherwise differentiate into the uterus and fallopian tubes. Some mutations in the anti-Mullerian hormone result in persistent Mullerian duct syndrome. [provided by RefSeq, Jul 2008].

SWISS:
P03971

Gene ID:
268

Database links:

[Entrez Gene: 268](#) Human

[Entrez Gene: 11705](#) Mouse

[Entrez Gene: 25378](#) Rat

[Omid: 600957](#) Human

[SwissProt: P03971](#) Human

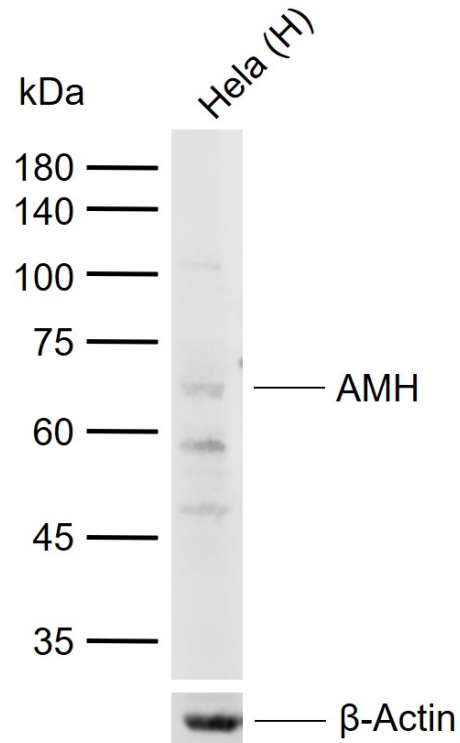
[SwissProt: P27106](#) Mouse

[SwissProt: P49000](#) Rat

[Unigene: 112432](#) Human

[Unigene: 19121](#) Rat

Product Picture



Sample:

Lane 1: Human HeLa cell lysates

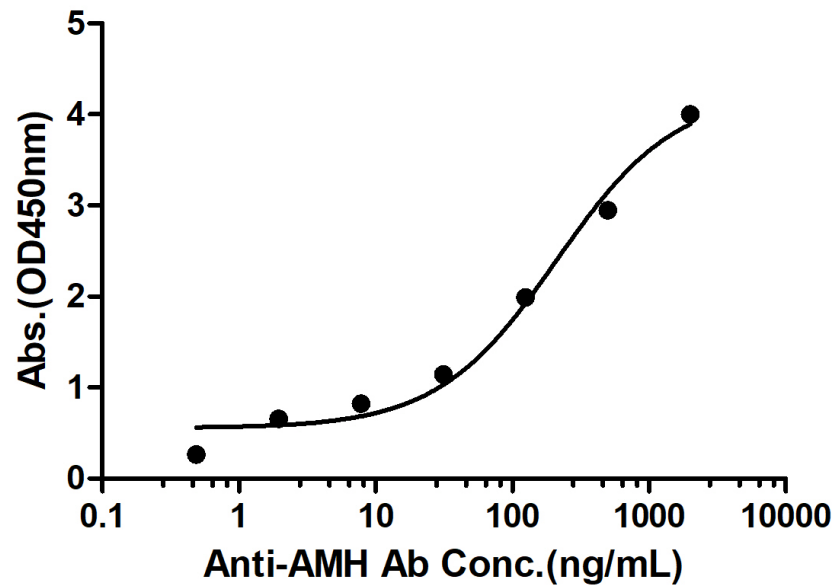
Primary: Anti-AMH (SL43520R) at 1/1000 dilution

Secondary: IRDye800CW Goat Anti-Rabbit IgG at 1/20000 dilution

Predicted band size: 57 kDa

Observed band size: 70 kDa

Rabbit Anti-Human AMH Antibody Bind with Human AMH protein, His Tag



Measured by its binding ability in a indirect ELISA. Immobilized Human AMH protein, HisTag (Cat. SL43520P) at 2 $\mu\text{g/mL}$ (100 $\mu\text{L/well}$) can bind Rabbit Anti-Human AMH Antibody, the EC50 is 210.8 ng/mL.