

Rabbit Anti-MPXV M1R antibody

SL42062R

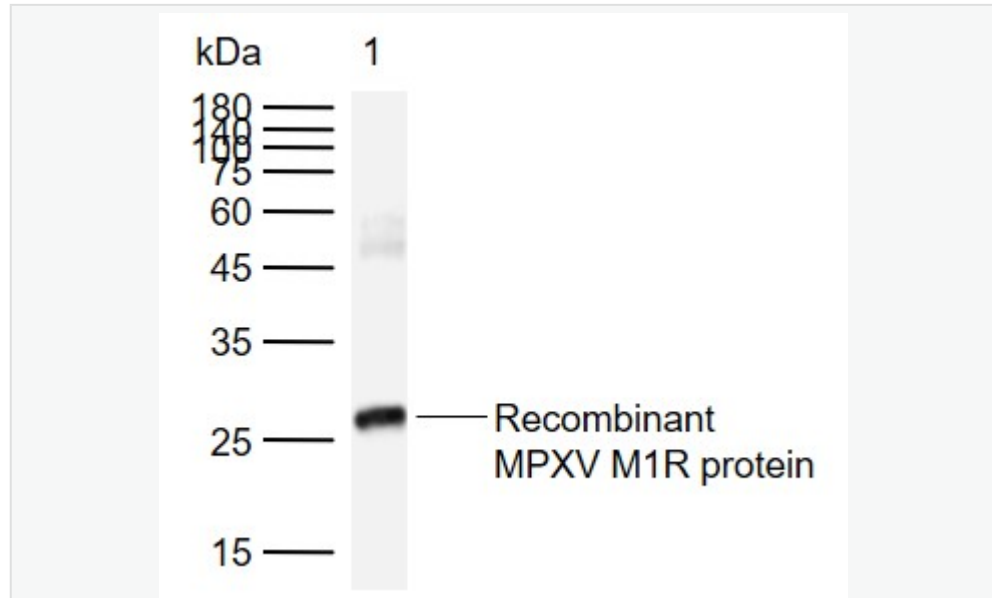
Product Name	MPXV M1R
Chinese Name	猴痘病毒 MIR 抗体
Alias	Q8V502_MONPZ; Monkeypox virus M1R; MIR.
Research Area	Bacteria and viruses
Immunogen Species	Rabbit
Clonality	Polyclonal
React Species	MPXV
Applications	WB=1:500-2000 ELISA=1:5000-10000 WB=1:500-2000,ELISA=1:5000-10000 not yet tested in other applications. optimal dilutions/concentrations should be determined by the end user.
Theoretical molecular weight	27kDa
Form	Liquid
Concentration	1mg/ml
immunogen	Recombinant MPXV M1R protein: 1-182/250
Lsotype	IgG
Purification	affinity purified by Protein A
Buffer Solution	MPXV1M TBS(pH7.4) with 1% BSA, MPXV3% Proclin300 and 50% Glycerol.
Storage	Shipped at 4°C. Store at -20 °C for one year. Avoid repeated freeze/thaw cycles
Attention	This product as supplied is intended for research use only, not for use in human, therapeutic or diagnostic applications.
PubMed	PubMed
Product Detail	Monkeypox is a rare zoonosis caused by monkeypox virus, which has become the most serious orthpoxvirus and consists of complex double stranded DNA. The cases are mostly in central and western Africa. The pathogenesis of monkeypox is that the virus invades the body from respiratory mucosa , multiplies in lymphocytes, and incurs into blood producing transient venereal toxemia. after the virus multiplies in cells, the cells can invade the blood and

propagate to the skin of the whole body, causing lesions.

SWISS:
Q8V502

Gene ID:
928968

Product Picture



Sample:

Lane 1: Recombinant human VEGFR1 protein, C-His (HEK293)

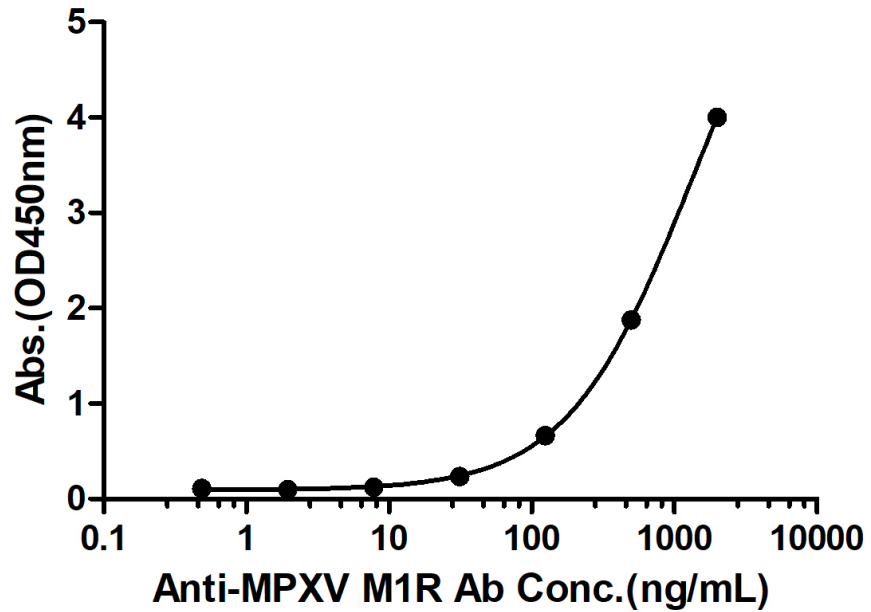
Primary: Anti-MPXV M1R (SL42062R) at 1/1000 dilution

Secondary: IRDye800CW Goat Anti-Rabbit IgG at 1/20000 dilution

Predicted band size: 27 kDa

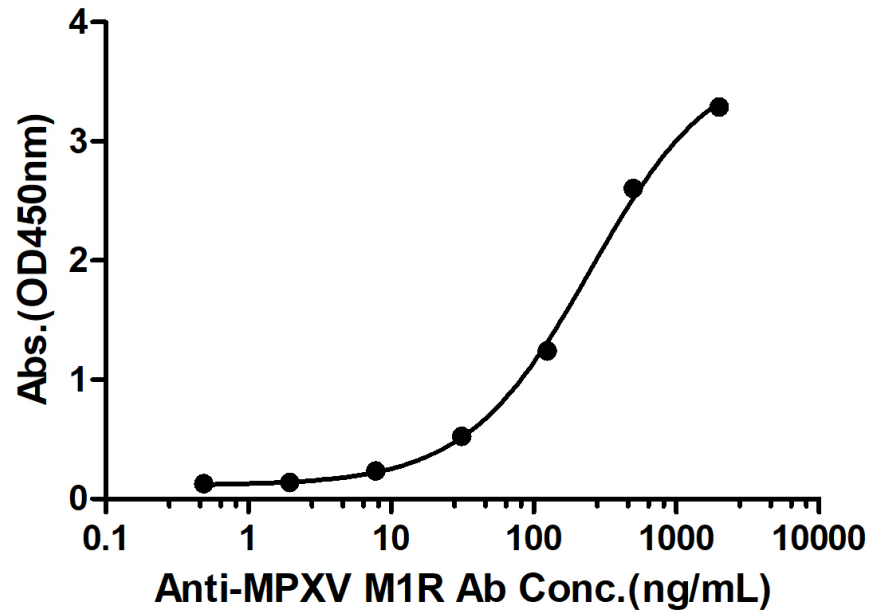
Observed band size: 27 kDa

Rabbit Anti-MPXV M1R Antibody Bind with MPXV M1R protein, His Tag



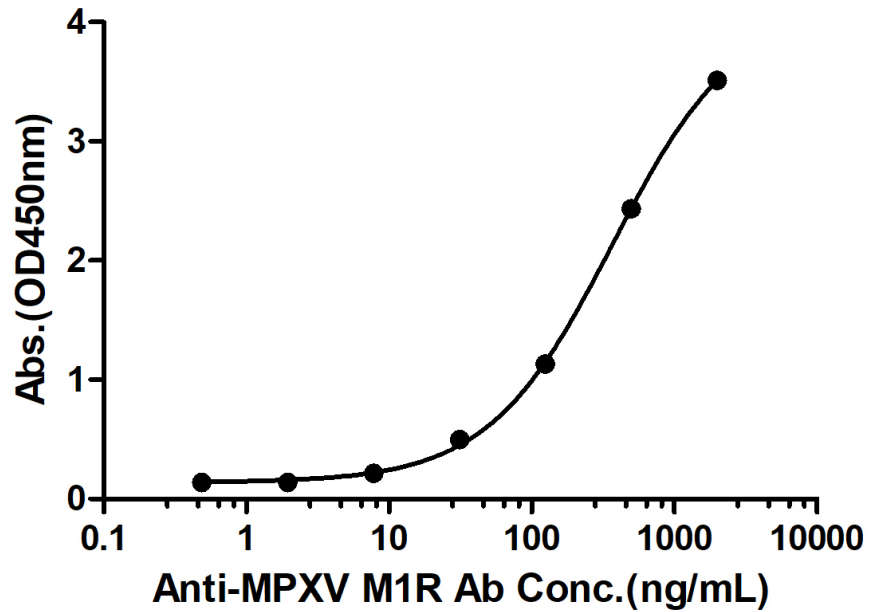
Measured by its binding ability in a indirect ELISA. Immobilized MPXV M1R protein, His Tag (Cat. SL42062P) at 2 $\mu\text{g/mL}$ (100 $\mu\text{L/well}$) can bind Rabbit Anti-MPXV M1R Antibody, the EC50 is 1309 ng/mL.

Rabbit Anti-MPXV M1R Antibody Bind with MPXV M1R protein, His Tag



Measured by its binding ability in a indirect ELISA. Immobilized MPXV M1R protein, His Tag (Cat. SL42062P) at 2 $\mu\text{g/mL}$ (100 $\mu\text{L/well}$) can bind Rabbit Anti-MPXV M1R Antibody, the EC50 is 251.4 ng/mL.

Rabbit Anti-MPXV M1R Antibody Bind with MPXV M1R protein, His Tag



Measured by its binding ability in a indirect ELISA. Immobilized MPXV M1R protein, His Tag (Cat. SL42062P) at 2 $\mu\text{g/mL}$ (100 $\mu\text{L/well}$) can bind Rabbit Anti-MPXV M1R Antibody, the EC50 is 369.2 ng/mL.