

Rabbit Anti-alpha Internexin antibody

SL42003R

Product Name alpha Internexin

Chinese Name α -中连蛋白抗体

Alias a-Internexin; Alpha-Internexin; Alpha-Internexin; 66 kDa neurofilament protein; Alpha Inx; INA; Internexin neuronal intermediate filament protein alpha; MGC12702; NEF 5; NEF5; Neurofilament 5 (66kD); Neurofilament 66; Neurofilament 66 tax binding protein; NF 66; NF66; NF-66; TXBP 1; TXBP1; AINX_HUMAN; Alpha-Inx; Neurofilament-66.

Research Area Neurobiology Stem cells Cell adhesion molecule Cytoskeleton

Immunogen Species Rabbit

Clonality Polyclonal

React Species Human, Mouse, Rat,
WB=1:500-2000,ELISA=1:5000-10000

Applications not yet tested in other applications.
optimal dilutions/concentrations should be determined by the end user.

Theoretical molecular weight 55kDa

Cellular localization cytoplasmic

Form Liquid

Concentration 1mg/ml

immunogen Recombinant human Alpha-internexin protein: 1-499/499

Lsotype IgG

Purification affinity purified by Protein A

Buffer Solution 1M TBS(pH7.4) with 1% BSA, 3% Proclin300 and 50% Glycerol.

Storage Shipped at 4°C. Store at -20 °C for one year. Avoid repeated freeze/thaw cycles.

Attention This product as supplied is intended for research use only, not for use in human, therapeutic or diagnostic applications.

PubMed [PubMed](#)

eurofilaments are type IV intermediate filament heteropolymers composed of light, medium, and heavy chains. Neurofilaments comprise the axoskeleton and they functionally maintain the neuronal caliber. They may also play a role in intracellular transport to axons and dendrites. This gene is a member of the intermediate filament family and is involved in the morphogenesis of neurons. [provided by RefSeq, Jun 2009]

SWISS:
Q16352

Gene ID:
9118

Database links:

[Entrez Gene: 9118](#) Human

**Product
Detail**

[Entrez Gene: 226180](#) Mouse

[Entrez Gene: 24503](#) Rat

[Omim: 605338](#) Human

[SwissProt: Q16352](#) Human

[SwissProt: P46660](#) Mouse

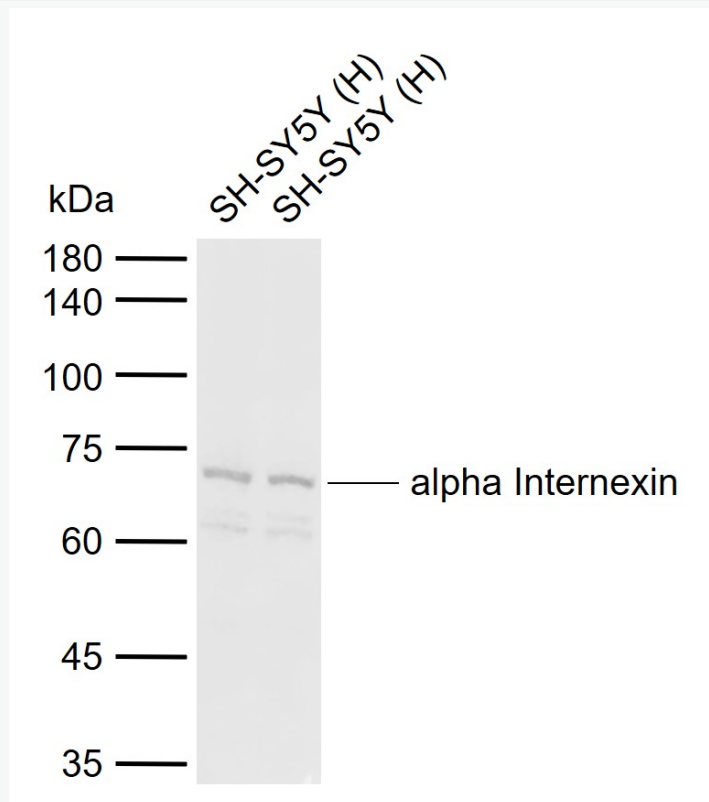
[SwissProt: P23565](#) Rat

[Unigene: 500916](#) Human

[Unigene: 276251](#) Mouse

[Unigene: 88941](#) Rat

**Product
Picture**



Sample:

Lane 1: Human SH-SY5Y cell lysates

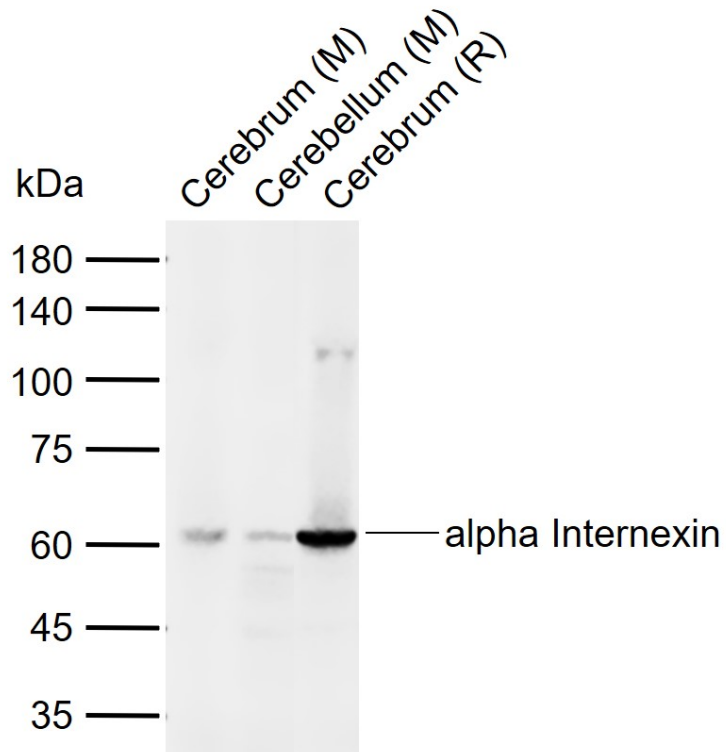
Lane 2: Human SH-SY5Y cell lysates

Primary: Anti-alpha Internexin (SL42003R) at 1/1000 dilution

Secondary: IRDye800CW Goat Anti-Rabbit IgG at 1/20000 dilution

Predicted band size: 55 kDa

Observed band size: 66 kDa



Sample:

Lane 1: Mouse Cerebrum tissue lysates

Lane 2: Mouse Cerebellum tissue lysates

Lane 3: Rat Cerebrum tissue lysates

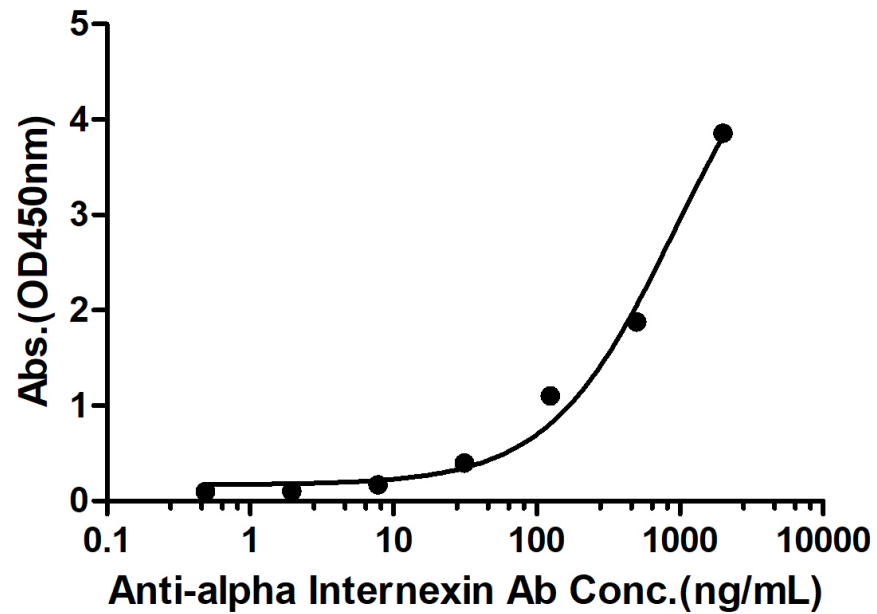
Primary: Anti-alpha Internexin (SL42003R) at 1/1000 dilution

Secondary: IRDye800CW Goat Anti-Rabbit IgG at 1/20000 dilution

Predicted band size: 55 kDa

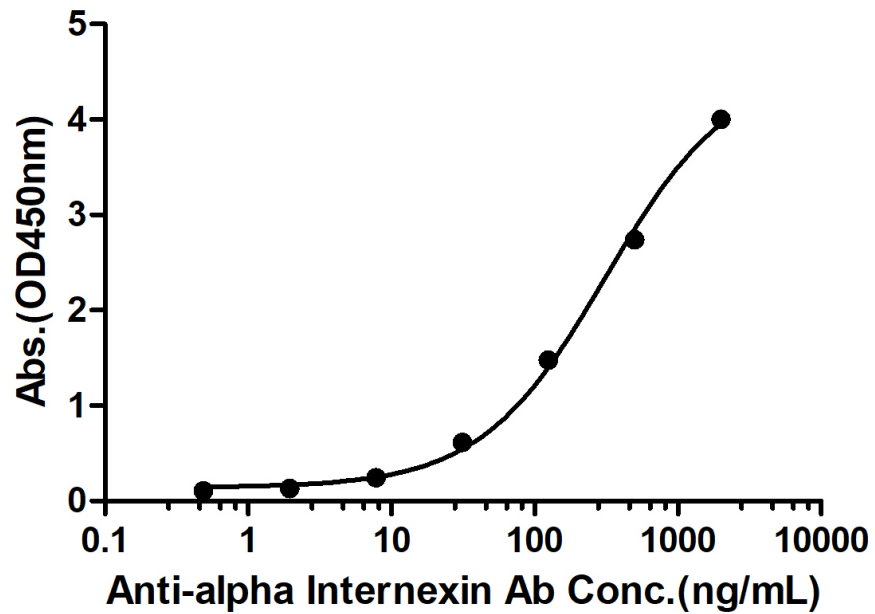
Observed band size: 60 kDa

Rabbit Anti-Human alpha Internexin Antibody Bind with Human alpha Internexin protein, His Tag



Measured by its binding ability in a indirect ELISA. Immobilized Human alpha Internexin protein, His Tag (Cat. SL42003P) at 2 $\mu\text{g/mL}$ (100 $\mu\text{L/well}$) can bind Rabbit Anti-Human alpha Internexin Antibody, the EC50 is 911.2 ng/mL.

Rabbit Anti-Human alpha Internexin Antibody Bind with Human alpha Internexin protein, His Tag



Measured by its binding ability in a indirect ELISA. Immobilized Human alpha Internexin protein, His Tag (Cat. SL42003P) at 2 $\mu\text{g/mL}$ (100 $\mu\text{L/well}$) can bind Rabbit Anti-Human alpha Internexin Antibody, the EC50 is 312.5 ng/mL.