

Rabbit Anti-GFAP antibody

SL42001R

Product Name	GFAP
Chinese Name	胶质纤维酸性蛋白抗体
Alias	Astrocyte Marker; FLJ45472; GFAP; Glial Fibrillary Acidic Protein; Intermediate filament protein; GFAP_HUMAN.
Research Area	Tumour Cell biology immunology Neurobiology Signal transduction Stem cells Cell adhesion molecule Cell type markers Cytoskeleton
Immunogen Species	Rabbit
Clonality	Polyclonal
React Species	Human, (predicted: Mouse, Rat,) WB=1:5000-20000,ICC/IF=1:100-500,ELISA=1:5000-10000
Applications	not yet tested in other applications. optimal dilutions/concentrations should be determined by the end user.
Theoretical molecular weight	48kDa
Cellular localization	cytoplasmic
Form	Liquid
Concentration	1mg/ml
immunogen	Recombinant human GFAP protein: 1-390/432
Lsotype	IgG
Purification	affinity purified by Protein A
Buffer Solution	1M TBS(pH7.4) with 1% BSA, 3% Proclin300 and 50% Glycerol.
Storage	Shipped at 4°C. Store at -20 °C for one year. Avoid repeated freeze/thaw cycles.
Attention	This product as supplied is intended for research use only, not for use in human, therapeutic or diagnostic applications.
PubMed	PubMed
Product Detail	This gene encodes one of the major intermediate filament proteins of mature astrocytes. It is used as a marker to distinguish astrocytes from other glial cells during development. Mutations in this gene cause Alexander disease, a rare

disorder of astrocytes in the central nervous system. Alternative splicing results in multiple transcript variants encoding distinct isoforms. [provided by RefSeq, Oct 2008]

SWISS:

P14136

Gene ID:

2670

Database links:

[Entrez Gene: 281189](#) Cow

[Entrez Gene: 2670](#) Human

[Entrez Gene: 14580](#) Mouse

[Entrez Gene: 24387](#) Rat

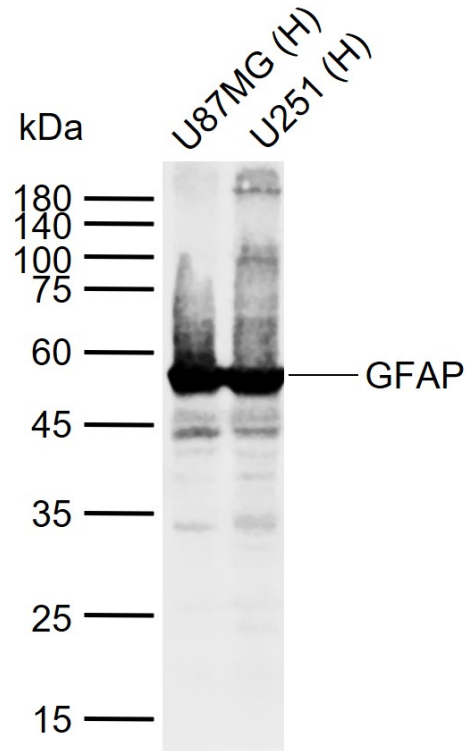
[Omim: 137780](#) Human

[SwissProt: Q28115](#) Cow

[SwissProt: P14136](#) Human

[SwissProt: P03995](#) Mouse

Product Picture



Sample:

Lane 1: Human U87MG cell lysates

Lane 2: Human U251 cell lysates

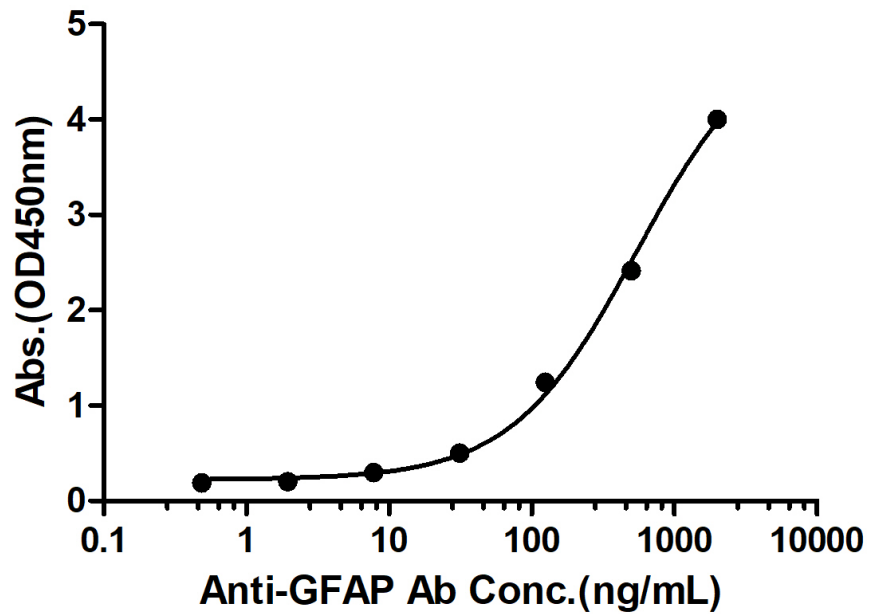
Primary: Anti-GFAP (SL42001R) at 1/1000 dilution

Secondary: IRDye800CW Goat Anti-Rabbit IgG at 1/20000 dilution

Predicted band size: 48 kDa

Observed band size: 50 kDa

Rabbit Anti-Human GFAP Antibody Bind with Human GFAP protein, His Tag



Measured by its binding ability in a indirect ELISA. Immobilized Human GFAP protein, His Tag (Cat. SL42001P) at 2 $\mu\text{g/mL}$ (100 $\mu\text{L/well}$) can bind Rabbit Anti-Human GFAP Antibody, the EC50 is 540.1 ng/mL.